

Community Health Needs Assessment

CHI St. Alexius Health – Devils Lake, ND
Approved April 2025



Acknowledgements

The CHNA process is a significant undertaking resulting from the vision and leadership of numerous individuals and governing bodies. It is important to acknowledge those who have dedicated time and energy to ensure that thoughtful planning and long-range strategic vision serve as the basis for policy and decision-making regarding community health needs.

Researchers with the Center for Social Research at North Dakota State University gratefully acknowledge the support of the individuals and organizations who assisted in the preparation of the Community Health Needs Assessment for CHI St. Alexius Health in Devils Lake, ND.

Financial support was provided by CHI Health, a member of CommonSpirit Health.

North Dakota State University does not discriminate on the basis of age, color, disability, gender expression/identity, genetic information, marital status, national origin, public assistance status, race, religion, sex, sexual orientation, or status as a U.S. veteran. Please address your inquiries regarding this publication to: The NDSU Center for Social Research, P.O. Box 6050, Dept. 2574, Fargo, ND 58108-6050, Phone: 701-231-8621, Email: Nancy.Hodur@ndsu.edu

NDSU is an equal opportunity institution.

Copyright © 2025 by Hodur, Schroeder, and Slone. All rights reserved. Readers may make verbatim copies of this document for non-commercial purposes by any means, provided this copyright notice appears on all such copies.

Table of Contents

Executive Summary	4
Purpose	4
CommonSpirit Health Commitment and Mission Statement	4
CHNA Collaborators.....	4
Community Definition	4
Assessment Process and Methods.....	4
Prioritized Significant Health Needs.....	5
Resources Potentially Available.....	6
Report Adoption, Availability, and Comments	6
Community Definition	7
Hospital Description	8
Assessment Process and Methods	9
Secondary data: community profiles.....	9
Primary data: health needs survey and community discussion.....	9
Community Input	10
Assessment Data and Findings	11
Community Profile.....	11
Community Demographics	11
Community Health Factors and Outcomes	15
National Risk Index	17
Community Health Survey Analysis.....	19
Demographics	19
Findings	19
Significant Community Health Needs	27
Resources Potentially Available to Address Needs	28
Impact of Actions Taken Since Preceding CHNA.....	29
2023-2025 Community Health Implementation Strategy.....	29
Health Need: Mental health for all ages (includes depression/anxiety/suicide/ stress).....	29
Health Need: Alcohol use and abuse of all ages	30
Health Need: Ability to retain primary care providers and nurses	31
References	32
Appendices	33
Appendix A: CDC/ATSDR Social Vulnerability Index 2022 for Ramsey, Benson, Eddy, and Pierce Counties, ND	33
Appendix B: Secondary Data Tables for Benson, Eddy, and Pierce Counties	37
Appendix C: Survey Instrument	49
Appendix D: Survey Frequencies	61

Executive Summary

Purpose

The purpose of this community health needs assessment (CHNA) is to identify and prioritize significant health needs of the community served by CHI St. Alexius Health Devils Lake. The priorities identified in this report help to guide the hospital's community health improvement programs and community benefit activities, as well as its collaborative efforts with other organizations that share a mission to improve health. This CHNA report meets requirements of the Patient Protection and Affordable Care Act that not-for-profit hospitals conduct a community health needs assessment at least once every three years.

CommonSpirit Health Commitment and Mission Statement

The hospital's commitment to engaging with the community, assessing priority needs, and helping to address them with community health program activities is in keeping with its mission. As CommonSpirit Health, we make the healing presence of God known in our world by improving the health of the people we serve, especially those who are vulnerable, while we advance social justice for all.

CHNA Collaborators

CHI St. Alexius Health Devils Lake contracted with the North Dakota State University Center for Social Research to conduct the CHNA. The Center for Social Research developed community profiles and developed and conducted a community feedback survey that provided the foundation for this needs assessment. Other collaborators included the Lake Region District Health Unit and Altru Health System.

Community Definition

CHI St. Alexius Health Devils Lake is located in Devils Lake, North Dakota. The hospital primarily serves Ramsey County, but also serves Benson, Eddy, and Pierce counties. CHI St. Alexius Health Devils Lake is the only hospital in Ramsey County and there are no hospitals in Benson or Eddy counties. Heart of America Medical Center is located in Pierce County. The primary service area for this community health needs assessment is Ramsey County, North Dakota.

Ramsey, Benson, Eddy, and Pierce counties are each designated as a Health Professional Shortage Area (HPSA) by the United States Health Resources & Services Administration. Furthermore, Ramsey and Benson counties have specific designations as Native American Population HPSAs and Pierce County has a specific designation as a Low Income HPSA. Benson, Eddy, and Pierce counties are also designated as a Medically Underserved Area (MUA) by the United States Health Resources & Services Administration. Ramsey County is located in northeastern North Dakota and has a population of 11,613.

Assessment Process and Methods

Community health needs were assessed using secondary data from national and state sources and primary data gathered from community members during a two-month survey period. CHI St. Alexius Health Devils Lake representatives solicited input to review and validate identified needs at a community meeting held December 19, 2024 in collaboration with Altru Health System.

Multiple data sources with various indicators that inform social considerations were compiled and analyzed. Data sources include but are not limited to County Health Rankings, the American Community Survey (ACS), the Bureau of Economic Analysis (BEA), and the Centers for Disease Control and Surveillance (CDC). All community level data were compared to state

and national data for context. Community member input was solicited via an online survey and a community input meeting.

The survey was administered using a QR code for public distribution using various online and print media and a survey link that was distributed by hospital personnel. At least one public health organization was invited to participate in the distribution of the community survey. Upon conclusion of the survey fielding period, data were compiled and analyzed. Survey data were analyzed using widely accepted standard descriptive statistics, such as measures of mean, median, and frequencies. Priority needs were identified as those issues with the greatest level of consensus among survey respondents.

CHI St. Alexius Health Devils Lake solicited feedback on survey findings at a community input meeting on December 19, 2024. A presentation that summarized the community profile and highlighted key survey findings was used to report priority needs identified in the survey results, as well as guide discussion of needs and priorities for community health improvement planning. CHI St. Alexius Health Devils Lake solicited input from community organizations representing health, education, law enforcement, victim advocacy, social services, and the medically underserved to review and validate community health needs.

Prioritized Significant Health Needs

Based on analysis of survey data, the following were identified as issues with the greatest degree of consensus among survey respondents. Secondary data are provided in support of these findings.

- **Substance misuse.** Nearly all respondents (99 percent) expressed concern about substance misuse (alcohol, prescription drugs, tobacco or vaping, illicit or street drugs) in their community. Eighty-nine percent of respondents were very concerned and 10 percent were slightly or somewhat concerned about substance misuse. Substance misuse, specifically drug use and misuse was identified as a priority health need in the previous CHNA conducted in 2022 and 76 percent of respondents indicated drug use and misuse has become worse in the community since then.
- **Mental health (anxiety, stress, depression).** Ninety-six percent of respondents expressed concerns about mental health in their community. Mental health was very concerning for 78 percent of respondents and another 18 percent were slightly or somewhat concerned about this issue. Further, 68 percent disagreed when asked if their community has adequate mental health services. The availability of mental health services and substance use disorder treatments were identified as a priority health need in the previous CHNA in 2022. When asked about change since then, 47 percent of respondents indicated that the availability of mental health and substance misuse treatments has worsened. While there was substantial consensus among survey respondents regarding mental health services, the ratio of population to mental health providers in Ramsey County (200:1) is lower than the ratio in North Dakota (450:1) and the nation overall (320:1).
- **Community Services.** Affordable housing, adequate public transportation, adequate child care services, and coordination of care across providers were identified as services that were inadequate in the community. Three-quarters (75 percent) of respondents disagreed that their community has enough affordable housing for everyone who needs

it and a similar percentage (72 percent) disagreed that their community has adequate public transportation services. Sixty-two percent of respondents disagreed that the community has adequate child care services and 50 percent disagreed when asked if health care is well coordinated across providers and services. Availability of child care services was identified as a priority health need in the previous CHNA. Most respondents indicated there has been no change in availability of child care services since the previous CHNA. A majority of respondents also indicated concerns about child abuse or neglect; 62 percent were very concerned and 31 percent were somewhat concerned. About half of respondents disagreed when asked if people in their community have a shared vision and community goals.

- **Availability of health care services.** The cost of health care services, the availability of local services, the price of prescription drugs, the length of time to see a provider, and distance to access care were cited as at least somewhat of a barrier to a majority of respondents. When asked about barriers to seeking health care, the price of health care services, even with insurance, was cited as at least somewhat of a barrier by 80 percent of respondents; 31 percent indicated cost was an extreme. The availability of local services to meet health care needs was at least somewhat of a barrier for 71 percent of respondents; 25 percent indicated it was an extreme barrier. The price of prescription drugs and the length of time to see a provider was cited as at least somewhat of a barrier to care by 59 percent of respondents. Fifty-six percent of respondents indicated distance to access care was at least somewhat of a barrier to health care services.

During the December 19, 2024 community input meeting, attendees discussed the issues identified in the survey results, as well as drug use during pregnancy due to lack of prenatal care. Escalation of violence in health care settings was discussed as an emerging issue. Mental health was emphasized during discussion as a growing, repeat concern, as noted in the presentation; attendees noted it continues to show up in CHNA assessments.

Resources Potentially Available

Programs, resources, and organizations in the community potentially available to address the significant health needs were identified by key informants giving input to this process. While not exhaustive, this list draws on the experiences and knowledge base of those directly serving the community. A list of resources is detailed in a separate resource section later in the report.

Report Adoption, Availability, and Comments

This CHNA report was adopted by the CHI St. Alexius Health Devils Lake board of directors in April 2025. The report is widely available to the public on the hospital's web site, and a paper copy is available for inspection upon request at the Administration Office of CHI St. Alexius Health Devils Lake. Written comments on this report can be submitted via mail to CHI Health - The McAuley Fogelstrom Center, (12809 W Dodge Rd, Omaha, NE 68154 attn. Healthy Communities); electronically at: <https://forms.gle/KGRq62swNdQyAehX8>; or by calling Ashley Carroll, Market Director, Community and Population Health, at: (402) 343-4548.

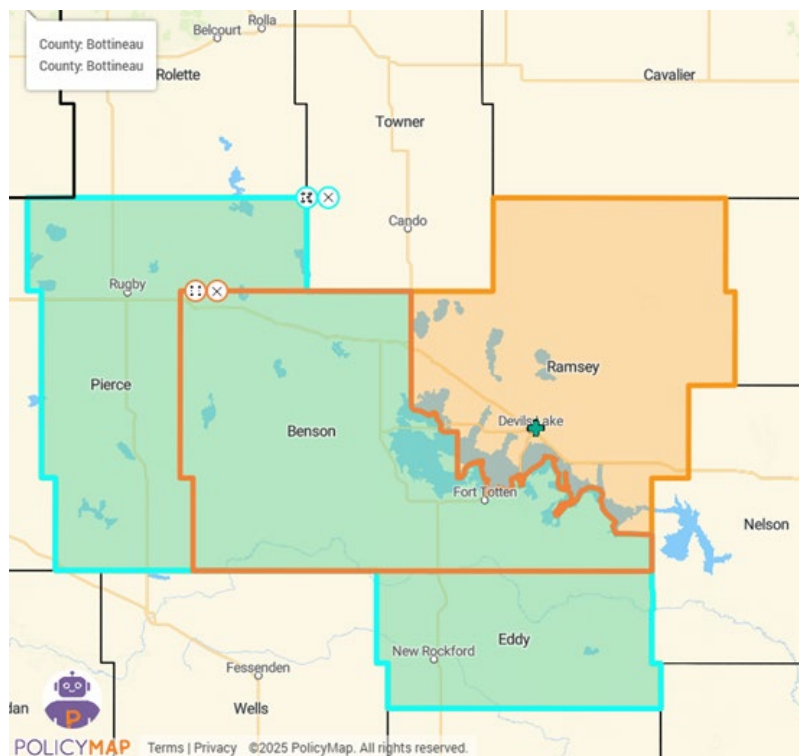
Community Definition

CHI St. Alexius Health Devils Lake is located in Devils Lake, North Dakota. The hospital primarily serves Ramsey County, but also serves Benson, Eddy, and Pierce counties. CHI St. Alexius Health Devils Lake is the only hospital in Ramsey County and there are no hospitals in Benson or Eddy counties. Heart of America Medical Center is located in Pierce County. Though Pierce County is home to a hospital of its own, CHI St. Alexius Health Devils Lake is the only provider in the four-county area that offers labor and delivery services with obstetrical care. The primary service area for this community health needs assessment is Ramsey County, North Dakota.

Ramsey, Benson, Eddy, and Pierce counties are each designated as a Health Professional Shortage Area (HPSA) by the United States Health Resources & Services Administration. Furthermore, Ramsey and Benson counties have specific designations as Native American Population HPSAs and Pierce County has a specific designation as a Low Income HPSA. Benson, Eddy, and Pierce counties are also designated as a Medically Underserved Area (MUA) by the United States Health Resources & Services Administration. Ramsey County is located in northeastern North Dakota and has a population of 11,613.

The following zip codes correspond to 80 percent of patient admissions to CHI St. Alexius Health Devils Lake: 58356, 58421, 58301, 58325, 58335, 58346, 58348, 58351, 58362, 58370, and 58379.

Figure A: CHI St. Alexius Health Devils Lake Community Health Needs Assessment Service Area



Core demographics for Ramsey County are summarized in Table 1.

Table 1. Core Demographic Summary, Ramsey County, North Dakota	
Measure	Ramsey County, ND
Community Description	Rural
Population	11,613
Racial and Ethnic Distribution	
White, non-Hispanic alone	81.9%
American Indian and Alaska Native alone	11.9%
Black or African American alone	0.6%
Asian or Pacific Islander alone	1.1%
Some other race alone	0.8%
Two or more races	3.5%
Hispanic Origin (of any race)	3.2%
Median Household Income	\$61,490
Percent of Person below Poverty Rate	15.8%
Unemployment Rate	2.3%
Percent Population with less than High School Diploma	7.3%
Percent of People 5 and Older who are Non-English Speaking	1.1%
Percent of People without Health Insurance	10.0%
Percent of People with Medicaid	18.2%
Health Professional Shortage Area	Yes
Medically Underserved Area	No
Number of Hospitals in the County	1 (CHI St. Francis Devils Lake)

Hospital Description

CHI St. Alexius Health Devils Lake Hospital, a 25-bed acute care facility accredited by The Joint Commission, has been serving the Lake Region area and surrounding communities since 1902. The hospital has a long history dating back to 1895 when the Sisters of Mercy were invited to establish a hospital in Devils Lake. The first hospital, St. Vincent DePaul Hospital was soon deemed too small, leading to the construction of Mercy Hospital on 80 acres of land in 1906.

In 2016, CHI Mercy Hospital of Devils Lake joined forces with other CHI facilities in North Dakota to form CHI St. Alexius Health, the region's largest health care system. This affiliation brought a network of referral relationships, allowing for efficient patient transfers when higher levels of care are needed. TeleHealth services also enable consultations with specialists near and far.

CHI St. Alexius Health Devils Lake is a three-time recipient of the Top 100 Critical Access Hospital Award, a testament to its commitment to providing high-quality care. The hospital is sponsored by CommonSpirit Health, a national nonprofit Catholic health care organization, and is a member of the Catholic Health Association, American Hospital Association, and the North Dakota Hospital Association.

The hospital offers a range of services, including 24/7 emergency care, a swing bed program, extensive therapy services, obstetrical care, rehabilitation and advanced radiology. The

dedicated and caring staff is committed to providing compassionate and excellent care to all patients.

CHI St. Alexius Health Devils Lake is a vital resource for the community, offering state-of-the-art facilities and a commitment to providing quality health care to all. The hospital's affiliation with CommonSpirit Health and its network of referral relationships ensure that patients have access to the best possible care, regardless of their needs.

Assessment Process and Methods

Community health needs were assessed using a two-pronged analysis approach: secondary data from national and state sources; and primary data gathered from community members during a two-month survey period. CHI St. Alexius Health Devils Lake solicited input from community organizations representing health, education, law enforcement, victim advocacy, social services, and the medically underserved to review and validate community health needs at a community input meeting held December 19, 2024.

Secondary data: community profiles

Community profiles are an integral part of assessing community health needs. To get a complete sense of the community, multiple data sources with various indicators that inform social considerations were compiled and analyzed. Data sources include but are not limited to County Health Rankings, the American Community Survey (ACS), the Bureau of Economic Analysis (BEA), and the Centers for Disease Control and Surveillance (CDC). All community level data were compared to state and national data for context. Community profile data for Benson, Eddy and Pierce counties can be found in Appendix B.

Primary data: health needs survey and community discussion

To help supplement secondary data sources, community member input was solicited via an online survey and a community input meeting. The online survey was administered using the Qualtrics online survey platform from August 12 to October 16, 2024. The survey was administered using a QR code for public distribution using various online and print media and a survey link that was distributed by hospital personnel. At least one public health organization was invited to participate in the distribution of the community survey. The survey questionnaire can be found in Appendix C.

The survey solicited feedback on respondents' perceptions of various issues and topics in six broad categories: people in my community, services in my community, concerns in my community, concerns about violence, medical services, and barriers to care. Survey data were analyzed using widely accepted standard descriptive statistics, such as measures of mean, median, and frequencies. Priority needs were selected by identifying issues with the greatest level of consensus among survey respondents. Survey findings are detailed later in this assessment. Detailed results can be found in Appendix D.

Community Input

CHI St. Alexius Health Devils Lake solicited feedback on survey findings at a community input meeting on December 19, 2024. A presentation that summarized the community profile and highlighted key survey findings was used to report priority needs identified in the survey results as well as to guide discussion of needs and priorities for community health improvement planning. CHI St. Alexius Health Devils Lake solicited input from community organizations representing health, education, law enforcement, victim advocacy, social services, and the medically underserved to review and validate community health needs.

Attendees discussed survey findings, whether survey findings aligned with their perceptions of their communities' needs, and the demographics of survey respondents. Attendees agreed that mental health was again identified as a community health need. Attendees discussed drug use during pregnancy due to lack of prenatal care and escalation of violence in health care settings. Care coordination between other health care providers in the region was also discussed.

There were 24 attendees, including representatives from:

- CHI St. Alexius Health Devils Lake
- Altru Health System
- NDSU Extension
- Lake Region District Health Unit
- North Dakota School for the Deaf
- Devils Lake Police Department
- ND Courts
- Lake Region State College
- Lake Region Ambulance Service

The hospital invited written comments on the most recent CHNA report and Implementation Strategy both in the documents and on the website where they are widely available to the public. No written comments have been received.

CHI St. Alexius Health Devils Lake collaborated with Altru Health System and the Lake Region District Health Unit on this CHNA. CHI St. Alexius Health Devils Lake contracted with the North Dakota State University Center for Social Research to conduct the CHNA. The Center for Social Research developed community profiles and developed and conducted a community feedback survey that provided the foundation for this needs assessment.

Assessment Data and Findings

The following sections provide a detailed community profile and survey results. Community profile data for Benson, Eddy and Pierce counties can be found in Appendix B.

Community Profile

Ramsey County is largely a rural county in northeastern North Dakota. The county seat and largest city is Devils Lake. With 11,613 residents, Ramsey County is North Dakota's 12th most populous county. It is home to proportionally more adults aged 65 and older than North Dakota and the United States as a whole. Like most of North Dakota, Ramsey County's racial composition is largely white, but there is a substantially higher percentage of American Indian residents due to the presence of the Spirit Lake Dakota Reservation bordering Ramsey County to the south. Educational attainment in Ramsey County is lower than in North Dakota overall and the poverty rate in Ramsey County is higher than both North Dakota and the nation. In addition, the median household income and median home value are lower in Ramsey County than they are in North Dakota and the nation overall, but so are the costs associated with home rental and ownership. Ramsey County has a higher-than-average percentage of householders living alone as well as households with residents aged 65 and older when compared to North Dakota and the nation overall.

Ramsey County has a higher rate of adult smoking, adult obesity, and physical inactivity than North Dakota and the nation overall. The adult excessive drinking rate in Ramsey County is similar to North Dakota (22 percent in Ramsey County compared to 23 percent statewide). The leading causes of death for Ramsey County in 2021 were malignant neoplasms, diseases of the heart, chronic liver disease and cirrhosis, COVID-19, and accidents. Ramsey County has a lower ratio of residents to primary care physicians, mental health care providers, and dentists than North Dakota and the nation overall.

When examining the National Risk Index Scores, Ramsey County faces a relatively moderate to relatively high risk of loss due to riverine flooding and various winter weather conditions including ice storms and strong winds. However, Ramsey County's overall risk due to natural hazards is relatively low. Ramsey County's social vulnerability is rated as relatively moderate, although this is highly stratified by census tract, with Devils Lake receiving a substantially higher social vulnerability score than the rest of the county. Ramsey County's community resilience is rated as very high. These factors combined give Ramsey County a relatively low National Risk Index Score, worse than most North Dakota counties but better than most counties nationally.

Community Demographics

The American Community Survey's (ACS) most recent five-year estimate of Ramsey County's population is 11,613, making it the state's 12th most populous county. About 1 in 4 residents in Ramsey County are under the age of 18 and 1 in 5 are aged 65 and older (Table 2). The county's racial composition is largely non-Hispanic white (81.9 percent). The American Indian population in Ramsey County comprised 11.9 percent of the total population, which is more than twice the statewide average of 4.7 percent. This is due largely to Ramsey County bordering the Spirit Lake Dakota Reservation to the north. An estimated 1.1 percent of the population in Ramsey County speaks English less than very well (Table 1). The county's gender split is roughly even at 50.3 percent female and 49.7 percent male.

Table 2. Population Estimates, Ramsey County, ND, North Dakota, and United States, by Age, Race/Ethnicity, and Sex (2022)

	Ramsey County Population	Ramsey County Percentages	North Dakota Percentages	United States Percentages
Age Group				
0-4	683	5.9%	6.7%	5.7%
5-17	2,114	18.2%	16.9%	16.4%
18-24	904	7.8%	11.3%	9.4%
25-44	2,599	22.4%	27.1%	26.6%
45-64	2,813	24.2%	22.2%	25.3%
65 and older	2,500	21.5%	15.9%	16.5%
Total	11,613	100.0%	100.0%	100.0%
Race and Ethnicity*				
White, non-Hispanic alone	9,516	81.9%	83.0%	58.9%
American Indian and Alaska Native alone	1,387	11.9%	4.7%	0.8%
Asian alone	112	1.0%	1.6%	5.8%
Black or African American alone	65	0.6%	3.2%	12.5%
Native Hawaiian and Pacific Islander alone	12	0.1%	0.2%	0.2%
Some other race alone	92	0.8%	1.4%	6.0%
Two or more races	405	3.5%	4.4%	8.8%
Hispanic Origin (of any race)	377	3.2%	4.3%	18.7%
Sex				
Female	5,843	50.3%	48.6%	50.4%
Male	5,770	49.7%	51.4%	49.6%
Total	11,613	100.0%	100.0%	100.0%
*Overlapping racial/ethnic categories mean that the percentages will not total to 100% of the population. Source: U.S. Census Bureau, 2018-2022 American Community Survey (ACS) 5-year estimates.				

Estimates from the ACS indicate that there are 5,049 households in Ramsey County with an average of 2.2 persons per household. Median household income is \$61,490, which is substantially lower than the median household income in North Dakota and the nation overall, \$73,959 and \$75,149, respectively (Table 3). Nearly two-thirds of households in Ramsey County are owner-occupied and median owner costs are \$1,528 per month including the mortgage. Median rent in Ramsey County is \$663 per month. Both median owner costs and median rent are lower in Ramsey County than North Dakota and the nation overall.

Table 3. Household Demographics, Ramsey County, ND, North Dakota, and United States (2022)

Item	Ramsey County	North Dakota	United States
Total households	5,049	320,038	125,736,353
Owner-occupied housing rate	62.1%	63.2%	64.8%
Average household size (persons per household)	2.2	2.3	2.6
Median value of owned-occupied housing	\$193,300	\$232,500	\$281,900
Median monthly owner costs (with mortgage)	\$1,528	\$1,653	\$1,828
Median monthly owner costs (without mortgage)	\$479	\$551	\$584
Median gross rent	\$663	\$912	\$1,268
Median household income	\$61,490	\$73,959	\$75,149

Source: U.S. Census Bureau, 2018-2022 American Community Survey (ACS) 5-year estimates.

About 40 percent of households in Ramsey County are occupied by householders living alone and 1 in 4 households have children in residence (Table 4). The percentages of householders living alone, households with residents aged 65 and older, and householders aged 65 and older living alone are higher in Ramsey County than in North Dakota overall as well as nationally.

Table 4. Household Characteristics, Ramsey County, ND, North Dakota, and United States (2022)

Household Characteristics	Ramsey County Households	Percent of Ramsey County Households*	Percent of North Dakota Households*	Percent of United States Households*
Households with children aged 0-17	1,212	24.0%	27.8%	30.2%
Households with adults aged 65 and older	1,850	36.6%	26.7%	30.8%
Householders living alone	2,006	39.7%	33.2%	28.3%
Householders aged 65 and older living alone	946	18.7%	11.8%	11.5%

*Overlapping household characteristics mean that the percentages of households will not total to 100% of the total number of households.

Source: U.S. Census Bureau, 2018-2022 American Community Survey (ACS) 5-year estimates.

Estimates from the ACS indicate that there are 5,851 adults in the workforce in Ramsey County. The largest industries in the county by percentage of the workforce employed are education, health care and social assistance; retail; and arts, entertainment, hospitality, and food service, which account for 29.5 percent, 15.9 percent, and 9.2 percent, respectively (Table 5). Other industries that employ substantial portions of the county's workforce include agriculture, public administration, and construction. In 2023, the county's three largest employers were Devils Lake Public School District, Walmart, and Lake Region State College. CHI St. Alexius Health Devils Lake was the seventh largest employer in the county (NDLMI 2024).

Table 5. Employment by Industry, Ramsey County, ND (2022)

Sector	Estimated Workers	Percent of Workforce
Educational services, health care, and social assistance	1,728	29.5%
Retail	931	15.9%
Arts, entertainment, hospitality, accommodation and food service	540	9.2%
Agriculture, forestry, fishing, hunting, and mining	482	8.2%
Public administration	379	6.5%
Construction	330	5.6%
Other	1,461	25.0%
Total workforce	5,851	100.0%

Source: U.S. Census Bureau, 2018-2022 American Community Survey (ACS) 5-year estimates.

The poverty rate in Ramsey County is 15.8 percent, which is higher than the poverty rate in North Dakota overall (10.8 percent) and the nation (12.5 percent) (Table 6). About 1 in 4 (25.6 percent) children in Ramsey County live below the poverty line compared to 11.3 percent statewide and 16.7 percent nationally. Roughly 36 percent of school-aged children in Ramsey County are eligible for free or reduced-price school lunch, which is higher than in North Dakota overall (23.2 percent) but lower than the national average (50.8 percent).

Table 6. Poverty Characteristics, Ramsey County, ND, North Dakota, and United States (2022)

Poverty Characteristics	Ramsey County Estimate	Ramsey County Percent*	North Dakota Percent*	United States Percent*
All persons below poverty level (% of total population)	1,761	15.8%	10.8%	12.5%
All persons below 200% poverty level (% of total population)	3,297	29.5%	24.7%	28.8%
Children aged 0-17 below poverty level (% of children 0-17)	710	25.6%	11.3%	16.7%
Adults aged 65 and older below poverty level (% of adults 65 and older)	282	12.1%	9.1%	10.0%
Eligible recipients of free or reduced-price school lunch	641	35.8%	23.2%	50.8%

*Differing populations and overlapping categories mean that percentages will not total to 100%.

Sources: U.S. Census Bureau, 2018-2022 American Community Survey (ACS) 5-year estimates; 2024 County Health Rankings & Roadmaps, a program of the University of Wisconsin Population Health Institute.

Most residents of Ramsey County aged 25 and older (65.8 percent) have at least some college experience; 25.4 percent have attained a bachelor's degree or higher. This is lower than in North Dakota and nationally, where 31.4 percent and 34.3 percent, respectively, of the population aged 25 and older have at least a bachelor's degree. Fewer than one in 10 residents ages 25 and older in Ramsey County did not complete high school (7.3 percent), which is higher than in North Dakota (6.5 percent) but lower than the national average (10.9 percent) (Table 7).

Table 7. Educational Attainment for Persons Aged 25 and Older, Ramsey County, ND, North Dakota, and United States (2022)

Level of Education Attained	Ramsey County Estimate	Ramsey County Percent of Population 25 and Older	North Dakota Percent of Population 25 and Older	United States Percent of Population 25 and Older
Less than high school	576	7.3%	6.5%	10.9%
High school diploma or GED	2,122	26.8%	26.1%	26.4%
Some college or Associate's degree	3,199	40.4%	36.0%	28.5%
Bachelor's degree	1,499	18.9%	22.3%	20.9%
Graduate or professional degree	516	6.5%	9.1%	13.4%
<i>Total population aged 25 and older</i>	<i>7,912</i>	<i>100.0%</i>	<i>100.0%</i>	<i>100.0%</i>

Source: U.S. Census Bureau, 2018-2022 American Community Survey (ACS) 5-year estimates.

Community Health Factors and Outcomes

Ramsey County had a slightly higher prevalence of adult cigarette smokers (18 percent) than North Dakota (16 percent) and the nation overall (15 percent) (Table 8). The adult obesity rate in Ramsey County (37 percent) is similar to the rate in North Dakota (36 percent) and higher than the national average (34 percent). Adults in Ramsey County were slightly more likely to report a lack of physical activity outside of work (27 percent) than in North Dakota (25 percent) and the nation overall (23 percent). Although the percentage of adults who reportedly engage in excessive drinking is slightly lower in Ramsey County (22 percent) than it is in North Dakota (23 percent), it is slightly higher than the national average of 18 percent. The prevalence of Ramsey County residents reporting poor mental health days in the past month is the same as statewide prevalence (4 days per month each) and slightly lower than the national average (4.8 days per month).

Table 8. Health Behaviors, Ramsey County, ND, North Dakota, and the United States (2021)

Health Behavior	Ramsey County	North Dakota	United States
Adult Smoking	18%	16%	15%
Adult Obesity	37%	36%	34%
Adult Excessive Drinking	22%	23%	18%
Alcohol-Impaired Driving Deaths	29%	39%	26%
Physical Inactivity ¹	27%	25%	23%
Access to Exercise Opportunities ²	80%	76%	84%
Poor Mental Health Days ³	4.0	4.0	4.8

Source: 2024 County Health Rankings & Roadmaps, a program of the University of Wisconsin Population Health Institute.

¹Physical Inactivity refers to the percent of adults who report participating in no physical activity outside of work.

²Access to Exercise Opportunities refers to the percent of adults who report living close to a park or recreation facility.

³The average number of self-reported mentally unhealthy days in the past 30 days.

Leading causes of death for residents under age 75 in Ramsey County were malignant neoplasms, diseases of the heart, chronic liver disease, COVID-19, and accidents (Table 9). Life expectancy in Ramsey County is 76.2 years, which is lower than life expectancy in North

Dakota (78.1 years) and the nation overall (77.6 years) (County Health Rankings & Roadmaps, 2024).

Table 9. Leading Causes of Death in Ramsey County, ND Residents Under Age 75 (2019-2021)

Cause of Death	Deaths	Rate Per 100,000 Population Under 75
Malignant Neoplasms	39	124.5
Diseases of the heart	37	118.1
Chronic liver disease and cirrhosis ¹	14	Unreliable
COVID-19 ¹	13	Unreliable
Accidents ¹	12	Unreliable

Source: 2024 County Health Rankings & Roadmaps, a program of the University of Wisconsin Population Health Institute.
¹Crude rates per 100,000 population under 75 are unreliable due to the small number of deaths.

The rate of people under age 65 without health insurance is similar to the rate in North Dakota and the nation overall. In Ramsey County, 10 percent of people under the age of 65 did not have health insurance compared with 9 percent of all North Dakotans and 10 percent nationally (Table 10). The annual flu shot rate in Ramsey County (43 percent) is lower than North Dakota overall (49 percent) and three percentage points lower than the national average (46 percent).

The Food Environment Index is a measure of food security and access to healthy foods with a ranking system ranging from 0 (worst) to 10 (best). Ramsey County's Food Environment Index score was 8.4, which is lower than North Dakota's score of 9.1 but higher than the national score of 7.7 (Table 10).

Table 10. Other Health Factors, Ramsey County, ND, North Dakota, and United States

Description of Factor	Ramsey County	North Dakota	United States
Uninsured Rate, 2021	10%	9%	10%
Medicaid Coverage, 2022	18.2%	11.9%	20.4%
Unemployment Rate, 2022	2.3%	2.1%	3.7%
Low Birthweight Rate, 2016-2022	7%	7%	8%
Annual Mammogram Rate, 2021 ¹	54%	53%	43%
Annual Flu Shot Rate, 2021 ²	43%	49%	46%
Food Environment Index, 2019-2021 ³	8.4	9.1	7.7

Sources: US Census Bureau's Small Area Health Insurance Estimates (SAHIE) program, 2021; The Local Area Unemployment Statistics (LAUS) program of the Bureau of Labor Statistics, 2022; Map the Meal Gap, Feeding America, 2021; The Centers for Medicare & Medicaid Services Office of Minority Health's Mapping Medicare Disparities (MMD) Tool, 2021
¹Percentage of female Medicare enrollees who received an annual mammogram.
²Percent of Medicare enrollees who received an annual flu shot.
³The Food Environment Index is a measure of the food environment that combines food insecurity rates with rates of access to healthy foods. It is scored on a scale from 0 (worst) to 10 (best).

The ratio of Ramsey County residents to health care providers is lower than the ratio of residents to providers statewide and nationally. The ratio of Ramsey County residents to primary care physicians is 1,050:1 compared to a ratio of 1,290:1 in North Dakota and 1,330:1 nationally. The ratio of residents to mental health care providers and dentists is also lower in Ramsey County than in North Dakota and the nation overall (Table 11).

Table 11. Number of Residents Per Health Care Provider in Ramsey County, ND, North Dakota, and the United States			
Type of Provider	Ramsey County	North Dakota	United States
Primary Care Physicians, 2021	1,050:1	1,290:1	1,330:1
Mental Health Care Providers, 2024	200:1	450:1	320:1
Dentists, 2022	1,050:1	1,420:1	1,360:1
Sources: Health Resources & Services Administration, Area Health Resource Files; CMS, National Provider Identification Registry.			

National Risk Index

The Federal Emergency Management Agency (FEMA) administers the National Risk Index, a dataset and tool that estimates the risk level for natural disasters at the county level. A county's Risk Index is calculated using three metrics: Expected Annual Loss, Social Vulnerability, and Community Resilience. A community's exposure to and ability to cope with hazardous conditions can have a substantial impact on factors that inform community health outcomes, such as the strain on that community's health care system and its ability to make sure that residents have access to essential goods and services in times of crisis.

Overall, Ramsey County's National Risk Index rating is Relatively Low. This indicates a fairly strong general preparedness for and ability to recover from natural and manmade hazards. Seventy-two percent of North Dakota counties have a lower National Risk Index score than Ramsey County and 48 percent of counties nationally have a lower score (Table 12).

Table 12. National Risk Index Percentiles for Ramsey County, ND when compared to North Dakota Counties and U.S. Counties (2024)		
Index	Percentile within North Dakota	U.S. Percentile
Expected Annual Loss	66.0	50.1
Social Vulnerability	90.6	46.2
Community Resilience	90.6	92.9
<i>National Risk Index</i>	<i>71.7</i>	<i>48.3</i>
Note: The Risk Index can be read as "72% of counties in North Dakota have a lower Risk Index than Ramsey County; 48.3% of U.S. counties have a lower Risk Index than Ramsey County."		
Sources: FEMA, National Risk Index; CDC/ATSDR Social Vulnerability Index 2022; University of South Carolina's Hazards and Vulnerability Research Institute (HVRI)'s Baseline Resilience Indicators for Communities (HVRI BRIC).		

Expected Annual Loss

Expected Annual Loss scores are calculated by combining a community's exposure to natural hazards, annualized frequency of hazards, and the historic loss ratio for various natural hazards. Ramsey County's overall Expected Annual Loss is rated as Very Low overall on a five-point scale: Very Low, Relatively Low, Relatively Moderate, Relatively High, and Very High (NRI 2024). However, the county faces moderate to high winter weather and flooding hazards. Expected annual loss caused by ice storms, strong winds, winter weather, and cold waves is

also rated either relatively moderate or relatively high. Ramsey County's expected annual loss is higher than 66 percent of North Dakota counties and 50 percent of counties nationally.

Social Vulnerability Index

Social vulnerability is a concept related to a community's ability to prepare for and respond to hazardous events. A community's social vulnerability is gauged using the Social Vulnerability Index (SVI) (ATSDR) (CDC, 2024): an aggregated index of 16 socioeconomic factors categorized into four themes: socioeconomic status, household characteristics, racial and ethnic minority status, and housing type/transportation. SVI is a nationally recognized measure of a location's social vulnerability, and therefore its ability to prepare for and respond to disasters. While the SVI technically is a measure of ability to respond to natural disasters and aid emergency planning, the index is an accepted tool to gauge overall community socioeconomic well-being. A higher SVI indicates a higher vulnerability to hazard.

Ramsey County's Social Vulnerability is rated Relatively Moderate; however, within the city of Devils Lake scores suggest a higher level of vulnerability than other areas of the county. The social vulnerability score for Devils Lake is rated in the highest quartile for socioeconomic status, household characteristics, racial and ethnic minority status, and housing type/transportation. Overall, Ramsey County has higher social vulnerability than 91 percent of North Dakota counties and 46 percent of counties nationally. For a more thorough breakdown of Ramsey County's Social Vulnerability see Appendix A.

Community Resilience

A community's Community Resilience score is defined as its ability to prepare for, withstand, and recover from hazardous events (Cutter et al. 2014). Categories considered in the compilation of scores include Human Well-Being, Economy, Infrastructure, Governance, Community Capacity, and Environment. Ramsey County's Community Resilience ranking is Very High. Ramsey county has higher community resilience than 91 percent of North Dakota's 53 counties and 93 percent of counties nationally. While the county is vulnerable based on socioeconomic conditions, community resilience indicators suggest the county is well prepared to respond to hazardous events.

Community Health Survey Analysis

The community health survey solicited feedback on respondents' perceptions of various issues and topics in six broad categories: people in my community, services in my community, concerns in my community, concerns about violence, medical services, and barriers to care. Survey data were analyzed using widely accepted standard descriptive statistics, such as measures of mean, median, and frequencies. Priority needs were identified as those issues with the greatest level of consensus among survey respondents. Detailed survey findings can be found in Appendix D.

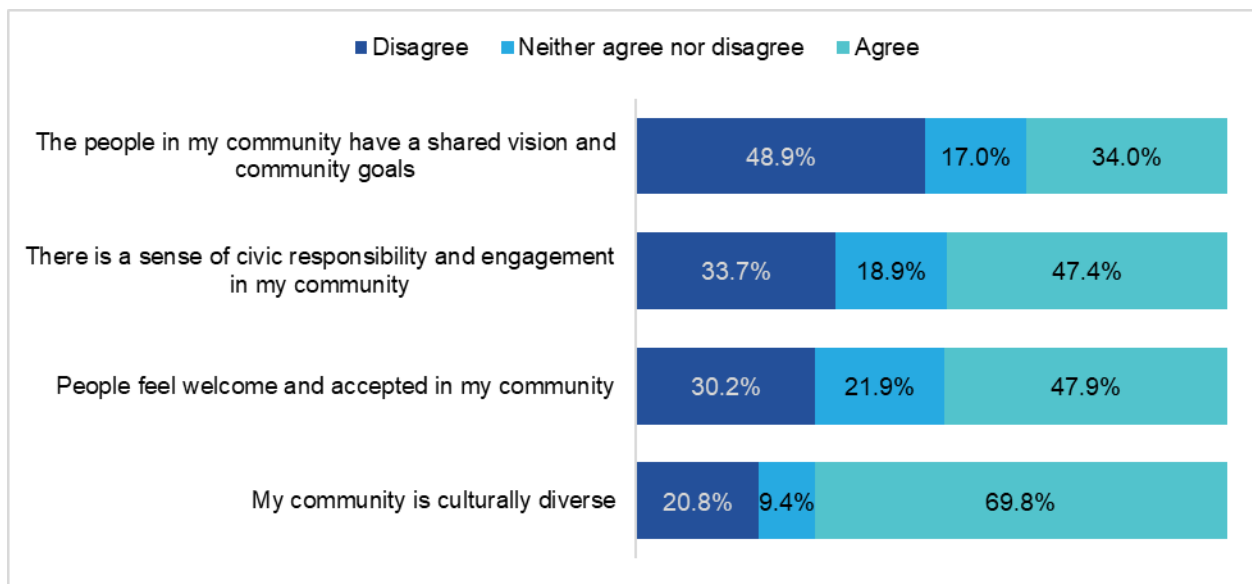
Demographics

The CHI St. Alexius Health Devils Lake community health needs assessment survey had 97 respondents from seven counties: Benson; Cavalier; Eddy; Pierce; Ramsey; Rolette; and Towner. Most respondents (89 percent) were from Ramsey County and the mean age of respondents was 46 years. Eighty-three percent of respondents were female. Eighty-nine percent self-identified as white and 7 percent of respondents identified as American Indian or Alaska Native. Nearly two-thirds (62 percent) of respondents had either an associate's or bachelor's degree and 84 percent were employed full-time. Most respondents (67 percent) reported an annual household income from \$50,000 to \$149,999.

Findings

While most respondents (70 percent) indicated that their community is culturally diverse, there was less consensus on other aspects of the community. Thirty-four percent of respondents disagreed that there is a sense of civic responsibility and engagement in their community and 19 percent neither agreed nor disagreed with that statement. Thirty percent of respondents disagreed that people feel welcome and accepted in their community and 22 percent neither agreed nor disagreed. When asked about people in the community having a shared vision and community goals, 49 percent of respondents disagreed and 17 percent neither agreed nor disagreed with that statement (Figure 1).

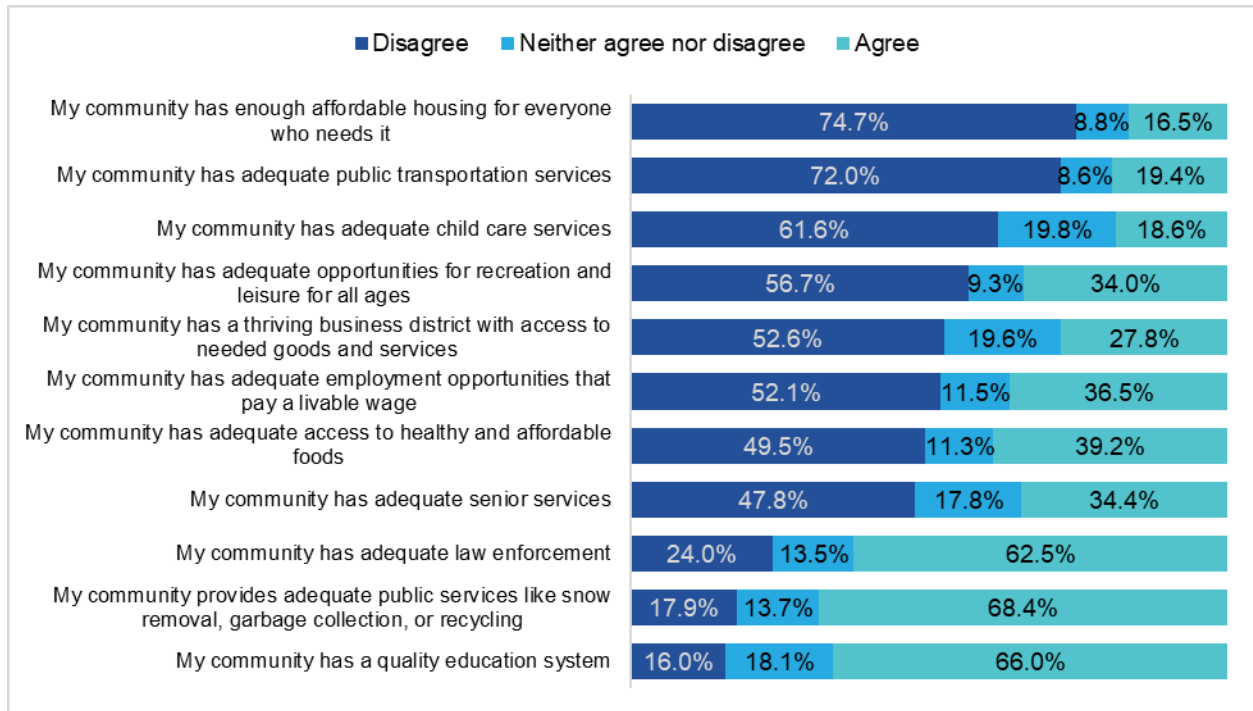
Figure 1: People in My Community, Community Health Needs Assessment, 2024



Respondent n: 94-96.

Three-quarters (75 percent) of respondents disagreed that their community has enough affordable housing for everyone who needs it and a similar percentage (72 percent) disagreed that their community has adequate public transportation services. Sixty-two percent of respondents disagreed that their community has adequate child care services, though 20 percent neither agreed nor disagreed with this statement. Conversely, about two-thirds of respondents agreed that their community provides adequate public services (such as snow removal and garbage pickup) (68 percent), a quality education system (66 percent), and adequate law enforcement (63 percent) (Figure 2).

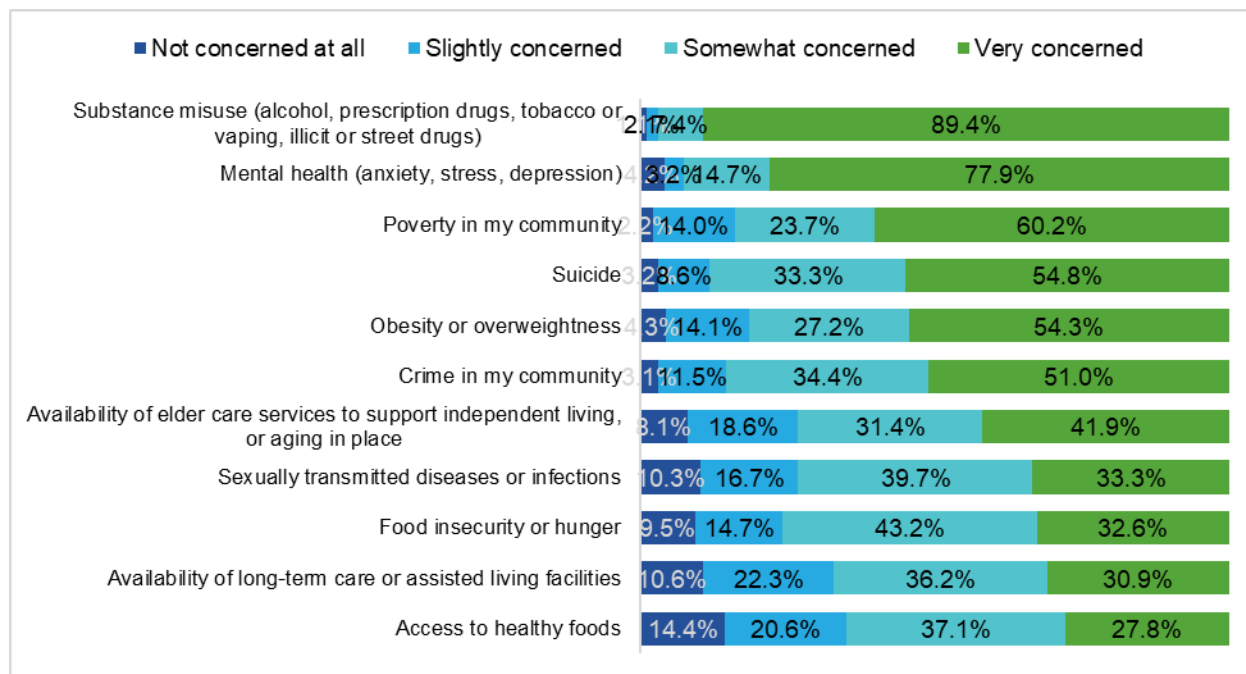
Figure 2: Services in My Community, Community Health Needs Assessment, 2024



Respondent n: 86-97.

Respondents expressed some level of concern for a variety of community issues. Substance misuse was very concerning for 89 percent of respondents and 10 percent were slightly or somewhat concerned about this issue. Mental health (anxiety, stress, and depression) was very concerning for 78 percent of respondents and 18 percent were slightly or somewhat concerned about this issue. Fourteen percent of respondents were not concerned at all about access to healthy foods, though 28 percent were very concerned about this issue (Figure 3). Notably, 50 percent of respondents disagreed that their community has access to affordable and healthy foods when asked about services in their community (Figure 2, above).

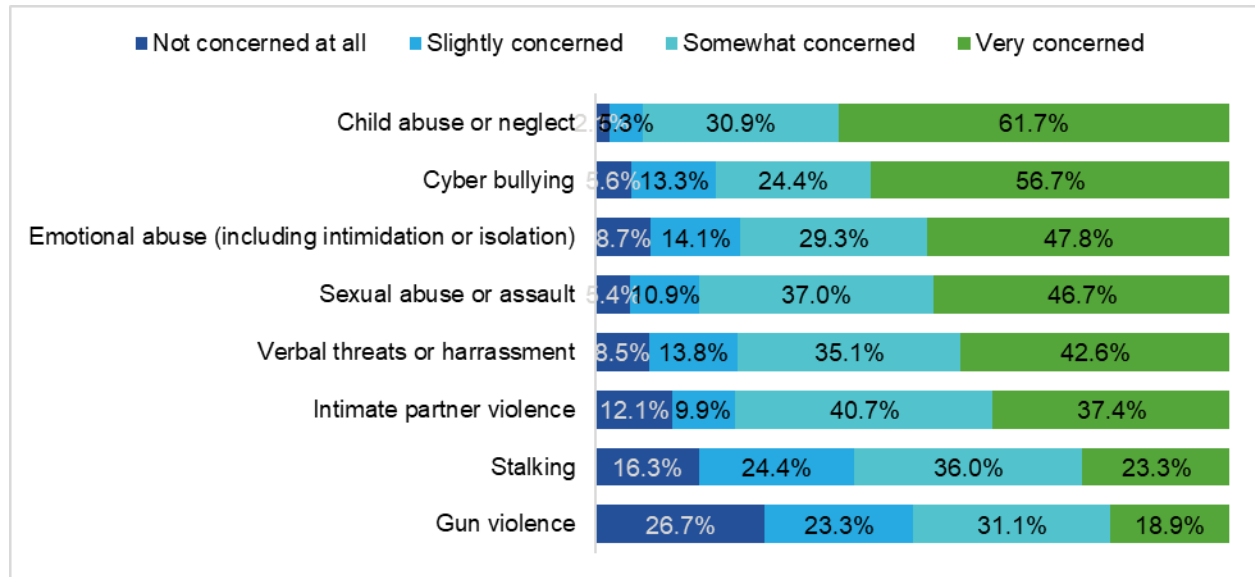
Figure 3: Concerns in My Community, Community Health Needs Assessment, 2024



Respondent n: 78-97.

When asked about violence concerns in the community, child abuse or neglect was very concerning to 62 percent of respondents and slightly or somewhat concerning to 36 percent of respondents. Fifty-seven percent of respondents were very concerned about cyber bullying and 38 percent were slightly or somewhat concerned. Twenty-seven percent of respondents were not at all concerned about gun violence (19 percent were very concerned), while 16 percent of respondents were not concerned at all about stalking (23 percent were very concerned) (Figure 4).

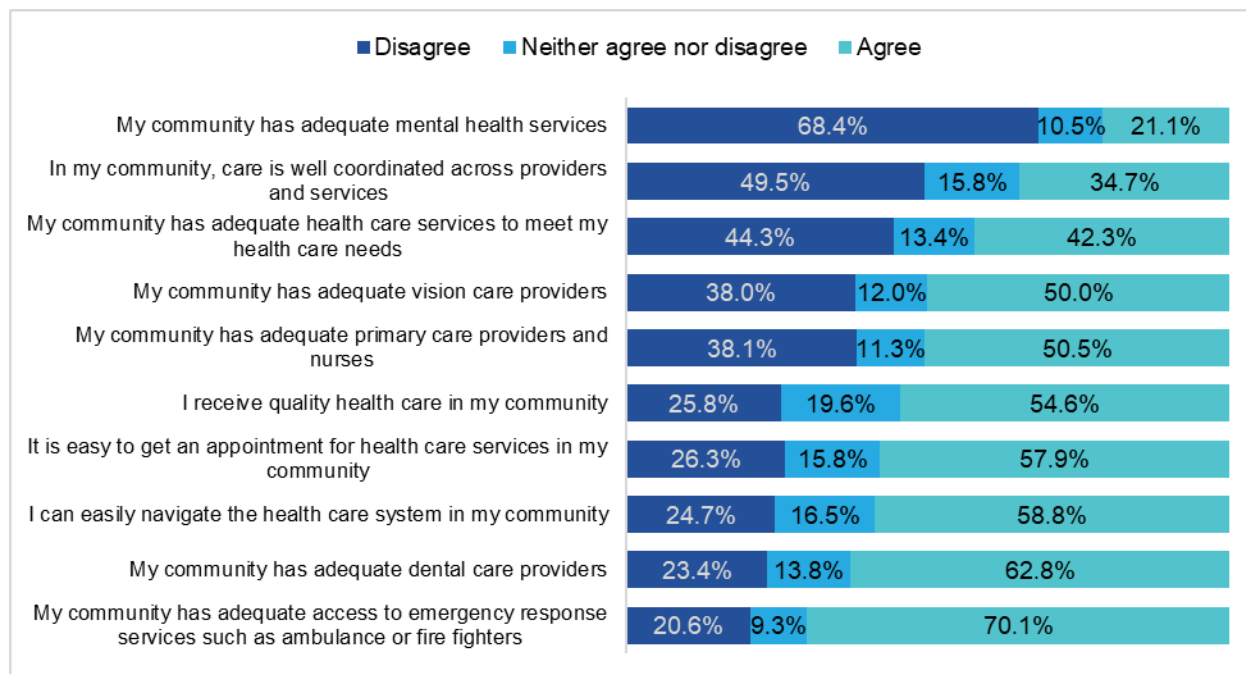
Figure 4: Violence Concerns in My Community, Community Health Needs Assessment, 2024



Respondent n: 94-96.

Respondents had strong opinions about mental health services in their community; 68 percent disagreed that their community has adequate mental health services, which is congruent with mental health concerns expressed in Figure 3. In addition, 50 percent of respondents disagreed when asked if care is well coordinated across providers and services. However, 70 percent of respondents agreed their community has adequate access to emergency response services (such as ambulance) and 63 percent agreed their community has adequate dental care providers (Figure 5).

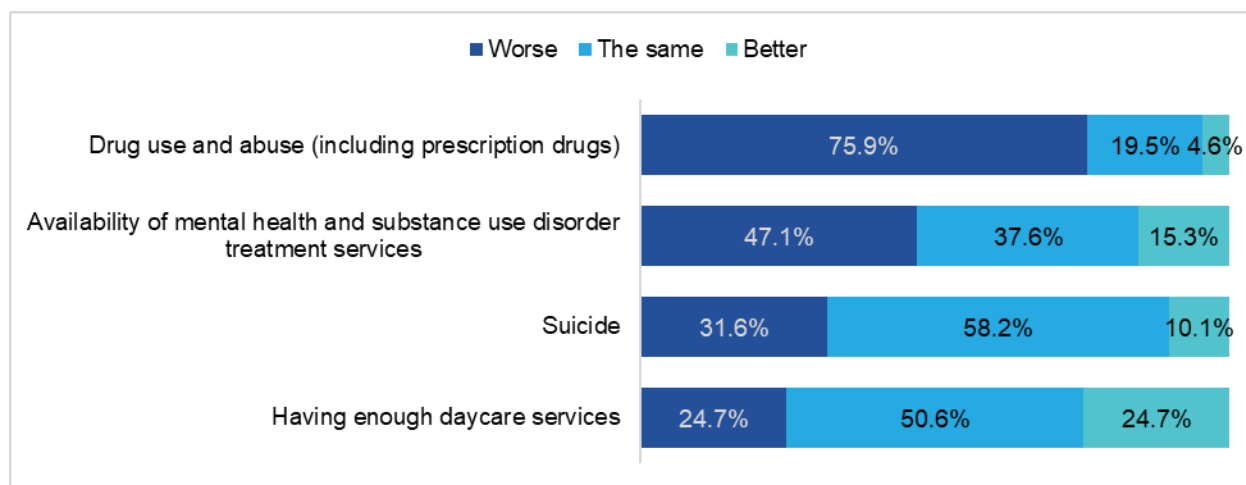
Figure 5: Medical Services in My Community, Community Health Needs Assessment, 2024



Respondent n: 94-96.

Respondents were asked about the prioritized community health needs identified in the previous CHNA conducted in 2022 to assess the perception of change. In general, few respondents indicated that any of the prioritized issues have improved; 51 percent indicated that having enough daycare services has stayed the same (25 percent thought it has improved and the same percentage thought it has worsened). Fifty-eight percent of respondents thought suicide in the community is the same as in 2022, while 10 percent thought it has improved and 32 percent thought it has worsened. However, the availability of mental health and substance use disorder treatment services was considered to have worsened since 2022 by 47 percent of respondents, and drug use and misuse in the community was considered worse by 76 percent of respondents (Figure 6).

Figure 6: Previous CHNA Issues, Community Health Needs Assessment, 2024

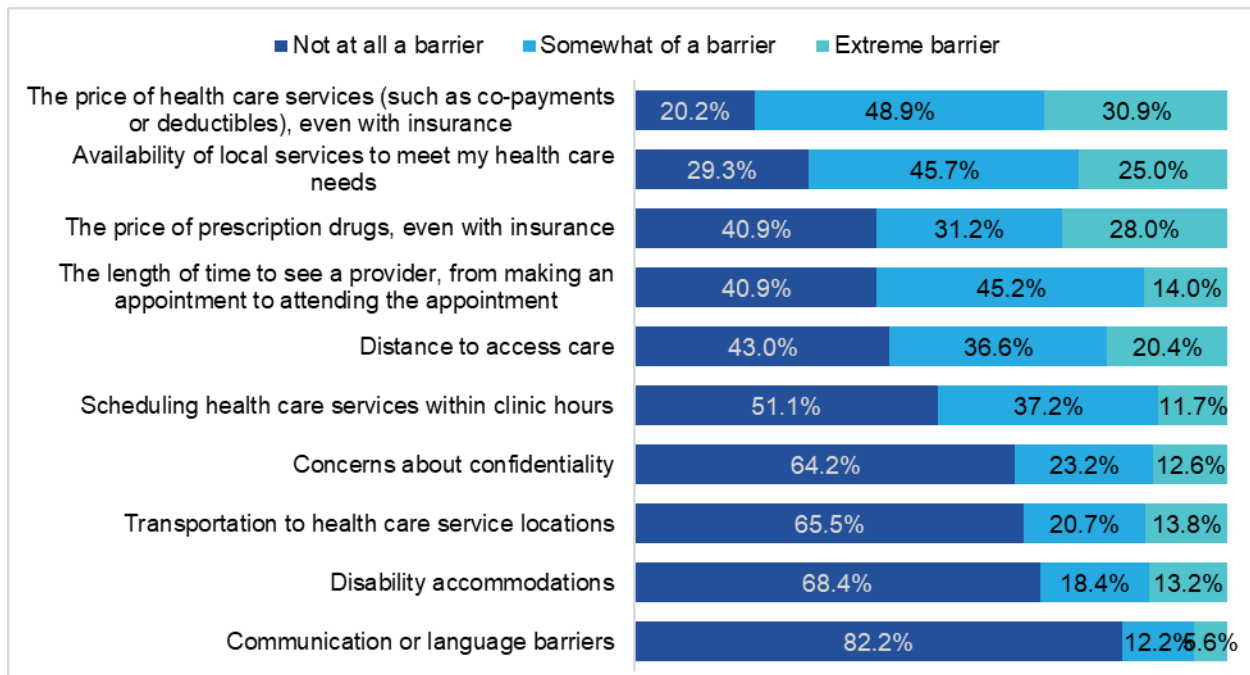


Respondent n: 79-87.

In the past year, more than three-quarters (77 percent) of respondents received a vaccination, and similar percentages had an annual physical exam (74 percent) and dental exam (74 percent). Slightly fewer respondents had received an annual vision exam (65 percent) (Appendix D).

When asked about barriers to seeking medical care, the price of health care services, even with insurance, proved to be at least somewhat of a barrier for 80 percent of respondents; 31 percent considered it an extreme barrier to care. The availability of local services to meet health care needs was at least somewhat of a barrier for 71 percent of respondents (25 percent considered it an extreme barrier). Most respondents (82 percent) did not consider communication or language as a barrier to care (Figure 7).

Figure 7: Barriers to Accessing Health Care, Community Health Needs Assessment, 2024

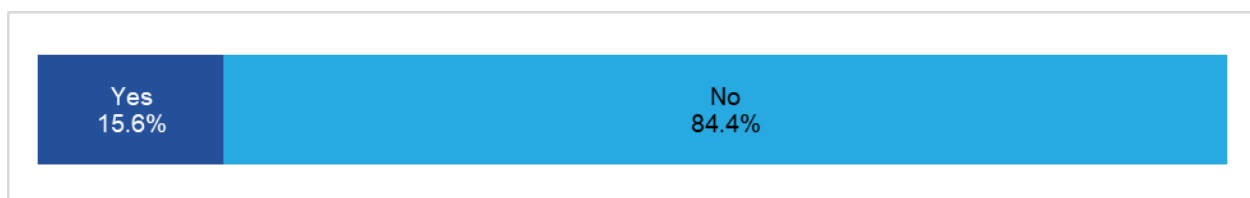


Respondent n: 76-95.

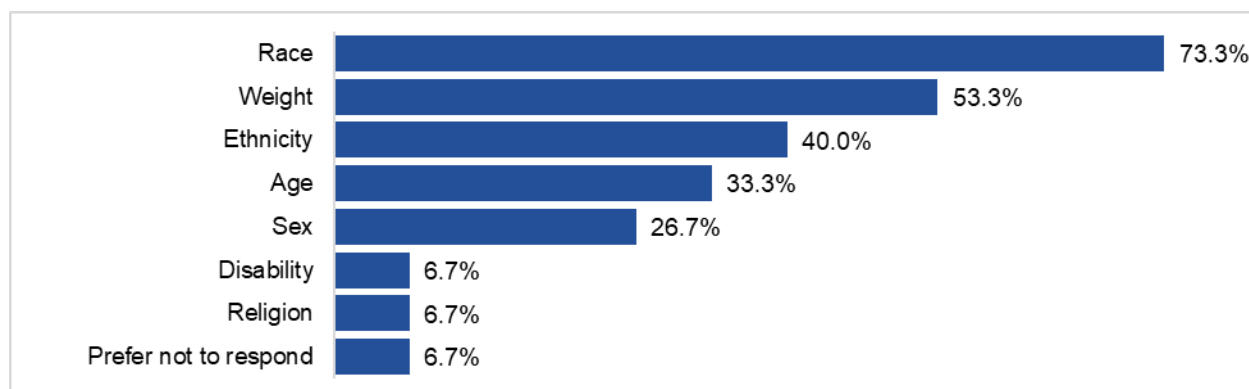
Most respondents (76 percent) cited their primary care provider as their source of health information; however, 64 percent said they use internet sources and 44 percent relied on word of mouth. Seventy-nine percent of respondents were insured through an employer; 12 percent had private health insurance and 13 percent used a government program such as Medicare or Medicaid (Appendix D).

When asked about discrimination, 16 percent of respondents said they had experienced discrimination in the past 12 months (Figure 8). Of respondents who experienced discrimination, 73 percent cited race as the discriminating issue, 53 percent cited weight, and 40 percent said they were discriminated against based on ethnicity (respondents were permitted to choose as many issues as applicable) (Figure 9). Forty percent of these incidents occurred while shopping at a store or eating at a restaurant, 33 percent occurred while at work, and 33 percent while receiving medical care (Figure 10).

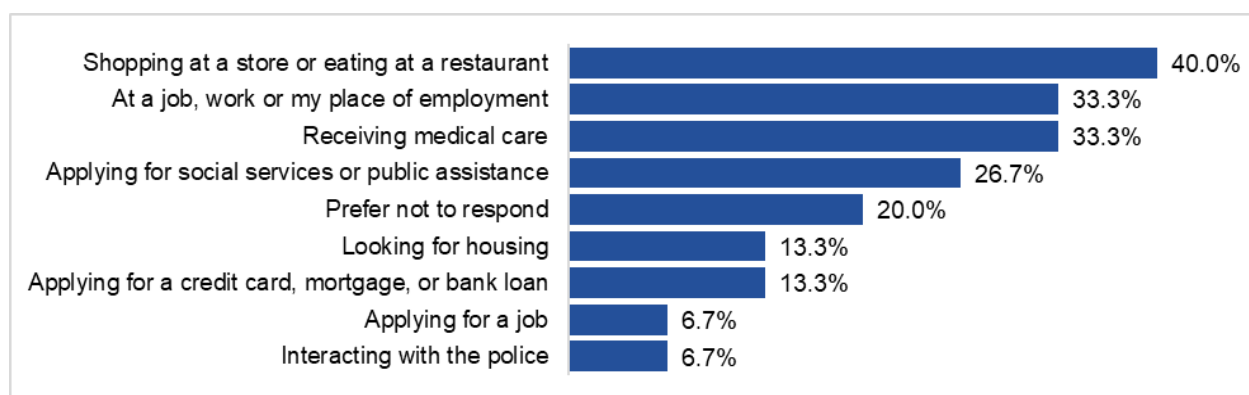
Figure 8: Discrimination Experienced in Past 12 Months, Community Health Needs Assessment, 2024



Respondent n: 96.

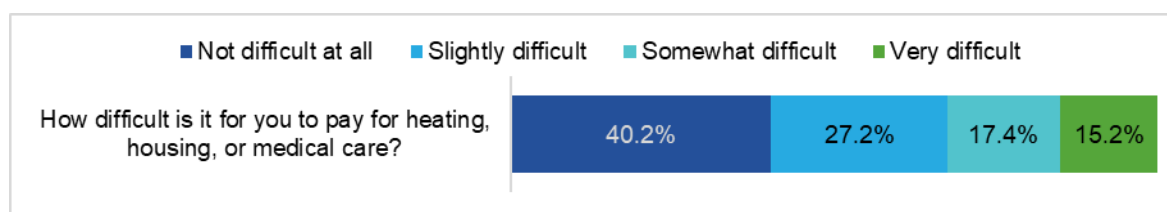
Figure 9: Areas of Discrimination, Community Health Needs Assessment, 2024


Respondent n: 15. Respondents were permitted to select more than one response.

Figure 10: Situations Where Discriminated, Community Health Needs Assessment, 2024


Respondent n: 15. Respondents were permitted to select more than one response.

Even though half (54 percent) of respondents reported an annual household income greater than \$75,000, 60 percent reported at least some difficulty paying for heating, housing, or medical care. Seventeen percent said it was somewhat difficult and 15 percent said it was very difficult to pay for these things (Figure 11).

Figure 11: Difficulty Paying for Heating, Housing, or Medical Care, Community Health Needs Assessment, 2024


Respondent n: 92.

Significant Community Health Needs

Based on analysis of survey data, the following were identified as issues with the greatest degree of consensus among survey respondents. Secondary data are provided in support of these findings.

- **Substance misuse.** Nearly all respondents (99 percent) expressed concern about substance misuse (alcohol, prescription drugs, tobacco or vaping, illicit or street drugs) in their community. Eighty-nine percent of respondents were very concerned and 10 percent were slightly or somewhat concerned about substance misuse. Substance misuse, specifically drug use and misuse was identified as a priority health need in the previous CHNA conducted in 2022 and 76 percent of respondents indicated drug use and misuse has become worse in the community since then.
- **Mental health (anxiety, stress, depression).** Ninety-six percent of respondents expressed concerns about mental health in their community. Mental health was very concerning for 78 percent of respondents and another 18 percent were slightly or somewhat concerned about this issue. Further, 68 percent disagreed when asked if their community has adequate mental health services. The availability of mental health services and substance use disorder treatments were identified as a priority health need in the previous CHNA in 2022. When asked about change since then, 47 percent of respondents indicated that the availability of mental health and substance misuse treatments has worsened. While there was substantial consensus among survey respondents regarding mental health services, the ratio of population to mental health providers in Ramsey County (200:1) is lower than the ratio in North Dakota (450:1) and the nation overall (320:1).
- **Community Services.** Affordable housing, adequate public transportation, adequate child care services, and coordination of care across providers were identified as services that were inadequate in the community. Three-quarters (75 percent) of respondents disagreed that their community has enough affordable housing for everyone who needs it and a similar percentage (72 percent) disagreed that their community has adequate public transportation services. Sixty-two percent of respondents disagreed that the community has adequate child care services and 50 percent disagreed when asked if health care is well coordinated across providers and services. Availability of child care services was identified as a priority health need in the previous CHNA. Most respondents indicated there has been no change in availability of child care services since the previous CHNA. A majority of respondents also indicated concerns about child abuse or neglect; 62 percent were very concerned and 31 percent were somewhat concerned. About half of respondents disagreed when asked if people in their community have a shared vision and community goals.
- **Availability of health care services.** The cost of health care services, the availability of local services, the price of prescription drugs, the length of time to see a provider, and distance to access care were cited as at least somewhat of a barrier to a majority of respondents. When asked about barriers to seeking health care, the price of health care services, even with insurance, was cited as at least somewhat of a barrier by 80 percent of respondents; 31 percent indicated cost was an extreme. The availability of local

services to meet health care needs was at least somewhat of a barrier for 71 percent of respondents; 25 percent indicated it was an extreme barrier. The price of prescription drugs and the length of time to see a provider was cited as at least somewhat of a barrier to care by 59 percent of respondents. Fifty-six percent of respondents indicated distance to access care was at least somewhat of a barrier to health care services.

Attendees at the community input meeting on December 19, 2024 discussed the issues presented, as well as drug use during pregnancy due to lack of prenatal care. Escalation of violence in health care settings was discussed as an emerging issue. Mental health was emphasized during the discussion as a growing, repeat concern as noted in the presentation; attendees noted it continues to show up in CHNA assessments.

Resources Potentially Available to Address Needs


Programs, resources, and organizations in the community that are potentially available to address the significant health needs were identified by key informants giving input to this process. While not exhaustive, the list draws on the experiences and knowledge base of those directly serving our community. The following potential partners may be useful resources as CHI St. Alexius Health Devils Lake strives to meet community needs.

- Suicide Prevention Coalition
- Alcoholics Anonymous and Narcotics Anonymous
- Community Action Partnership of ND
- Evolution Counseling
- Spirit Lake Shelter
- Jets Taxi
- Altru Health System
- Prevention Coalition
- Amachi Mentoring and Shelter Services Devils Lake
- Certified Community Behavioral Health Clinic at Lake Region Human Health Center (CCBHC) Human Health Services
- Devils Lake Crisis Coalition


Impact of Actions Taken Since Preceding CHNA

2023-2025 Community Health Implementation Strategy


Health Need: Mental health for all ages (includes depression/anxiety/suicide/ stress)

	Health Need: Mental health for all ages (includes depression/anxiety/suicide/ stress)
Strategy or Program	Summary Description
1.1	<p>Explore leveraging telehealth to increase access to CHI internal and external behavioral health resources.</p> <p>FY2023 Actions and Impact: Lake Region District Health has programs for suicide prevention programs. CHI St. Alexius has a discharge planning team for hospitalized patients that refers patients to appropriate resources for depression/anxiety/suicide/and stress. One of the major barriers expressed by staff is that many patients do not follow through with referrals. New for FY 2024: CHI St. Alexius Health Devils Lake plans to hire a new Community Health Resource</p> <p>Coordinator to serve the patients in both the clinic and emergency room settings to assess needs of patients including those included in the #1 Strategy.</p> <p>Measures: Number of patients referred vs the number of patients who return to both the emergency room and subsequently admitted to the hospital for the same behavioral health concerns. No data was available at time of reporting. Measures will be identified and reported in FY 2024.</p> <p>FY2024 Actions and Impact: No update to report.</p> <p>Measures: No Measures to report.</p>

Health Need: Alcohol use and abuse of all ages

	Health Need: Alcohol use and abuse of all ages
Strategy or Program	Summary Description
2.1	<p>Partner with Lake Region District Health Unit to support, promote and/or refer to existing programs such as: Not in My House, Responsible Beverage Training, alcohol misuse education, AL- Teen, In Depth (vaping education/ counseling), ND Quits and My Life, My Quit.</p> <p>FY2023 Actions and Impact: Lake Region District Health has a program offered for students and adults to bring awareness and available assistance for counseling and prevention. CHI St. Alexius Health Devils Lake Emergency Room has become a department where law enforcement brings patients picked up on the street and brought to the ER. The city closed its detox center in 2020 thus increasing the patients seen for alcohol or other addictions of varying nature that often leads to suicide ideation. CHI St. Alexius Health Devils Lake works with the local Health and Human Resource Center to find placement for appropriate patients. However, often the patients being seen have alcohol toxicity at levels of .3 -.5 leading to the inability to transfer patients. Patients are then admitted to the hospital with 1:1 observation. If the patient leaves and is still considered a vulnerable adult the local law enforcement is notified to assure the patient has a safe place to go.</p> <p>Measures: At this time, it is not felt that significant progress has been made to reduce alcohol consumption with other forms of drugs either prescription or illegal substances. This is evidenced by the increasing numbers of addiction/suicide patients being seen in the emergency room. Efforts will be made to identify, track and report consistent measures beginning in FY 2024.</p> <p>FY2024 Actions and Impact: No update to report.</p> <p>Measures: No Measures to report</p>

Health Need: Ability to retain primary care providers and nurses

	Health Need: Ability to retain primary care providers and nurses
Strategy or Program	Summary Description
3.1	<p>Recruit primary care providers and nurses.</p> <p>FY2023 Actions and Impact: The Devils Lake Hospital was able to recruit 2 Nurse Practitioners to the Devils Lake Clinic. There are two family practice or internal medicine positions still being recruited. Altru Health Systems provides the main primary care and were successful in adding one additional Family Practice with Obstetrics/C-Sections to their current group of five physicians.</p> <p>Devils Lake Emergency Room offered and signed one physician and one Nurse Practitioner with both slated to begin in June/July 2024. One additional physician is currently being advertised and there is a potential hire for April-May 2024.</p> <p>Devils Lake hired a PRN Hospitalist in October 2023 and has an open position as well as 1-2 Full time positions dependent upon the interest of the physician to work 7 or 14 days.</p> <p>Devils Lake has a recruitment plan active for a full-time general surgeon. One interested surgeon is not available until the fall of 2024. The position continues to be advertised and recruited. Recruitment is completed by the CommonSpirit Health Physician Enterprise team. Barriers to recruitment are the location of North Dakota in general as a rural state.</p> <p>Measures:</p> <ul style="list-style-type: none"> • Total number of positions remaining to be filled: 6 • Total number of physicians recruited/ signed: 1 • Total number of Nurse Practitioners recruited: 3 <p>FY2024 Actions and Impact: The CHI St. Alexius Devils Lake Hospital was able to retain the 2 Nurse Practitioners recruited to the Devils Lake Clinic. There are two family practice or internal medicine positions still being recruited. Altru Health Systems provides the main primary care workforce. They were successful in adding one additional Family Practice with Obstetrics/C-Sections to their current group of five physicians. In addition, they recruited one additional FP/OB who is going to continue her education and enter a fellowship for OB/GYN and return to the community in two years to practice in that field.</p> <p>Devils Lake Emergency Room offered and signed one physician to begin on July 7, 2024. One additional physician is currently being advertised. A new contract was signed with a recruitment agency to fill the Emergency room</p>

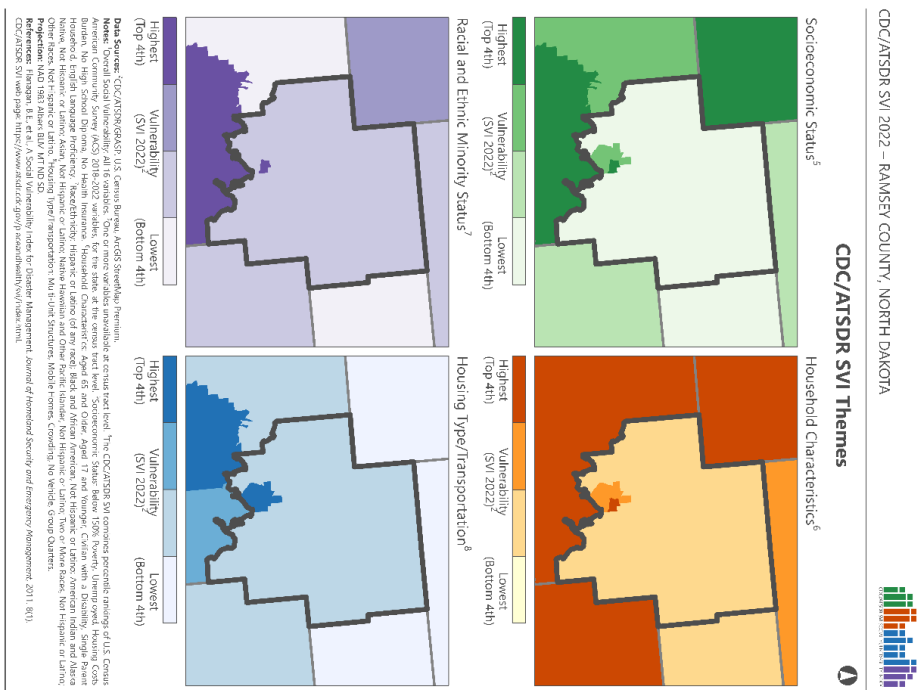
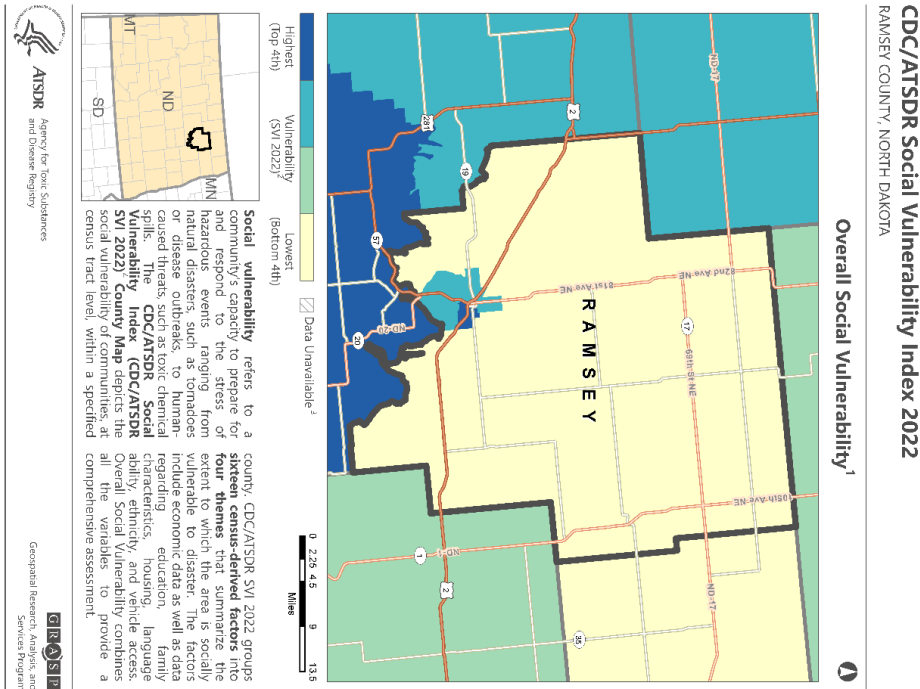
	<p>and hospitalist schedules. They officially started in April and May respectively.</p> <p>Devils Lake hired a PRN Hospitalist in October 2023 and has an open position as well as 1-2 Full time positions dependent upon interest of the physician to work 7 or 14 days.</p> <p>Devils Lake has a recruitment plan active for a full-time general surgeon. There have been two interviews and one onsite visit; however, both declined to offer their services to Devils Lake. The position continues to be advertised and recruited. Recruitment is completed by the CommonSpirit Health Physician Enterprise team. Barriers to recruitment are the location of North Dakota in general as a rural state and lack of a broader economic market for spouses.</p> <p>Measures:</p> <ul style="list-style-type: none"> • Total number of positions remaining to be filled: 6 • Total number of physicians recruited/ signed: 1 • Total number of Nurse Practitioners recruited: 3
--	---

References

- Centers for Disease Control and Prevention. (2024). *CDC/ATSDR SVI: Fact sheet*. Centers for Disease Control and Prevention. https://www.atsdr.cdc.gov/placeandhealth/svi/fact_sheet/fact_sheet.html
- County Health Rankings & Roadmaps (2024). *Ramsey County, North Dakota*. County Health Rankings & Roadmaps. <https://www.countyhealthrankings.org/health-data/north-dakota/ramsey?year=2024>
- Cutter, S. L., Ash, K. D., & Emrich, C. T. (2014). The geographies of community disaster resilience. *Global Environmental Change*, 29, 65–77. <https://doi.org/10.1016/j.gloenvcha.2014.08.005>
- National Risk Index. (2024). *Ramsey County, North Dakota*. Federal Emergency Management Agency. <https://hazards.fema.gov/nri/>
- North Dakota Labor Market Information (2024). *North Dakota Largest Employers*. North Dakota Job Service. <https://www.ndlmi.com/vosnet/gsipub/documentView.aspx?docid=682>

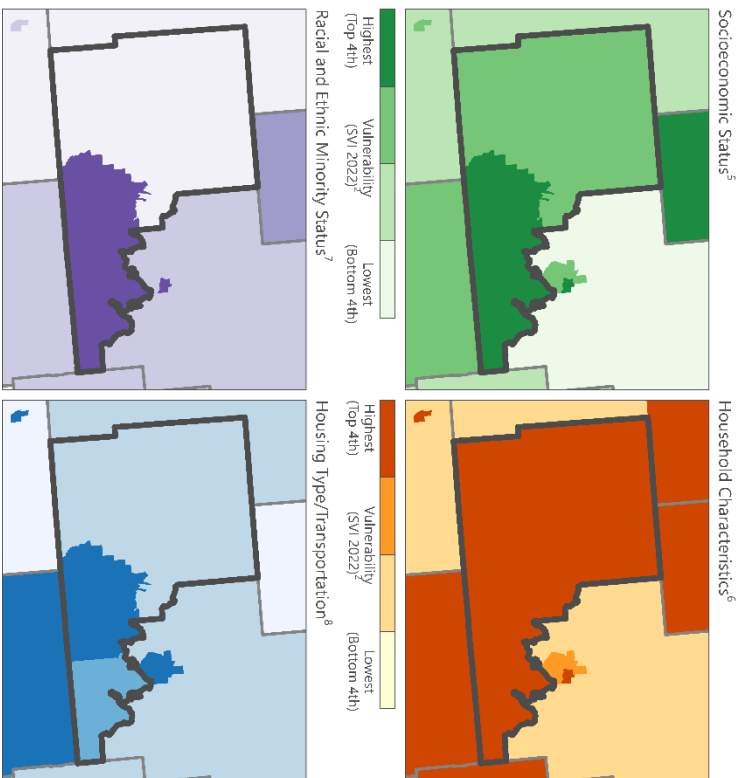
Appendices

Appendix A: CDC/ATSDR Social Vulnerability Index 2022 for Ramsey, Benson, Eddy, and Pierce Counties, ND



CDC/ATSDR SVI 2022 – BENSON COUNTY, NORTH DAKOTA

CDC/ATSDR SVI Themes




ATSDR
 Agency for Toxic Substances
 and Disease Registry

GRASP
Geospatial Research, Analysis, and
Services Program

Data Source: CDC/ATSDR/6K6AS, U.S. Census Bureau, ArcGIS Software, Primavera.

Note: Overall social vulnerability, all 5 states are ranked. One or more vulnerable subareas at a census tract level. The CDC/ATSDR SVI combines percentile rankings of U.S. Census Bureau's poverty, minority, and substandard housing. The CDC/ATSDR SVI is a composite of three variables: poverty, minority, and substandard housing. The CDC/ATSDR SVI is a composite of three variables: poverty, minority, and substandard housing. The CDC/ATSDR SVI is a composite of three variables: poverty, minority, and substandard housing.

References: Hargrett-Neale, B. et al., Social Vulnerability Index to Disaster Management, *Journal of Homeland Security and Emergency Management*, 2011, 8(1).

DOI: 10.1002/9781118133225.ch10

EDDY COUNTY, NORTH DAKOTA

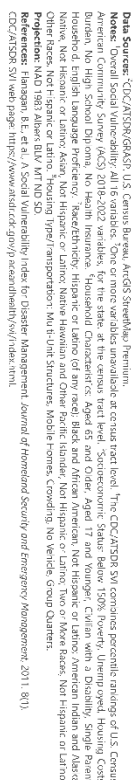
Overall Social Vulnerability¹

Social vulnerability refers to a community's capacity to prepare for and respond to the stress of hazardous events ranging from natural disasters, such as tornadoes or disease outbreaks, to human-caused threats, such as toxic chemical spills. The **CDC/ATSDR Social Vulnerability Index (CDC/ATSDR SVI 2022)** County Map depicts the social vulnerability of communities, at census tract level, within a specified

GRASP
Geospatial Research, Analysis, and
Services Program

CDC/ATSDR SVI 2022 – EDDY COUNTY, NORTH DAKOTA

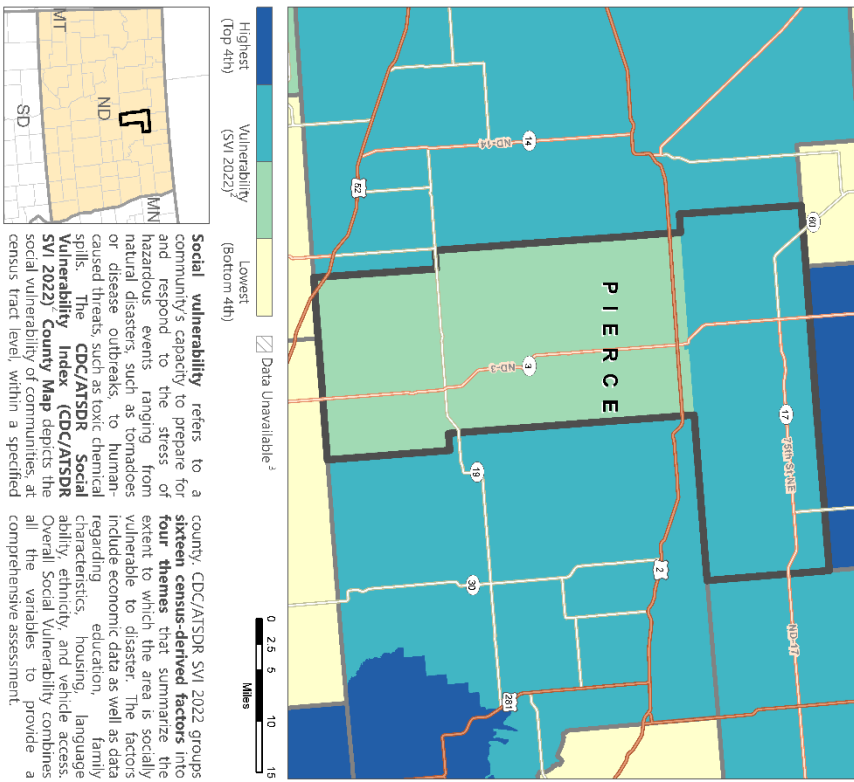
CDC/ATSDR SVI Themes



CDC/ATSDR Social Vulnerability Index 2022

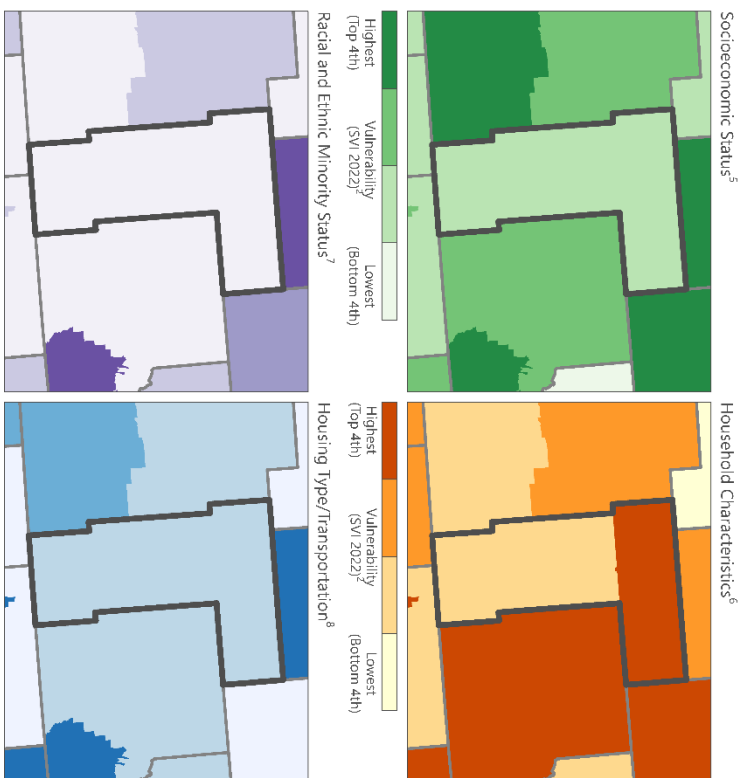
PIERCE COUNTY, NORTH DAKOTA

Overall Social Vulnerability¹



CDC/ATSDR SVI 2022 – PIERCE COUNTY, NORTH DAKOTA

CDC/ATSDR SVI Themes



Data Sources: CDC/ATSDR/GRASR, U.S. Census Bureau, ACS5 (Sherrill) Premium Tract-level data, as of 2019. The CDC/ATSDR SVI combines percentile ratings of U.S. Census Bureau's ACS5 (2018-2022) variables, for the state at the census tract level. Socioeconomic Status: Below \$10K, Poverty, Unemployed, Housing Costs Burden, No High School Diploma, No Health Insurance, Household Characteristics: Aged 65 and Older, Aged 17 and Younger, Civilian with a Disability, Single Parent Household, English Language Proficiency, Race/Ethnicity: Hispanic or Latino (of any race), Black, and African American, Not Hispanic or Latino, American Indian and Alaska Native, Not Hispanic or Latino, Asian, Not Hispanic or Latino, Native Hawaiian and Other Pacific Islander, Not Hispanic or Latino, Two or More Races, Not Hispanic or Latino, Other, Not Hispanic or Latino, Foreign born, Not Hispanic or Latino, No vehicle, Group Quarters.

References: Hatanan, B.E., et al. A Social Vulnerability Index for Disaster Management. *Journal of Homeland Security and Emergency Management*, 2011, 8(1).

Projection: NAD 1983 Albers BUV, MT ND SD.

CDC/ATSDR SVI web page: <https://www.atsdr.cdc.gov/dsp/about/svi/index.html>

Appendix B: Secondary Data Tables for Benson, Eddy, and Pierce Counties

Table B1.1. Population Estimates, Benson County, ND, North Dakota, and United States, by Age, Race/Ethnicity, and Sex (2022)

Age Group	Benson County Population	Benson County Percentages	North Dakota Percentages	United States Percentages
0-4	614	10.3%	6.7%	5.7%
5-17	1,475	24.7%	16.9%	16.4%
18-24	505	8.5%	11.3%	9.4%
25-44	1,271	21.3%	27.1%	26.6%
45-64	1,258	21.1%	22.2%	25.3%
65 and older	837	14.0%	15.9%	16.5%
Total	5,960	100.0%	100.0%	100.0%
Race and Ethnicity*				
White, non-Hispanic alone	2,381	39.9%	83.0%	58.9%
American Indian and Alaska Native alone	3,268	54.8%	4.7%	0.8%
Asian alone	35	0.6%	1.6%	5.8%
Black or African American alone	15	0.3%	3.2%	12.5%
Native Hawaiian and Pacific Islander alone	9	0.2%	0.2%	0.2%
Some other race alone	15	0.3%	1.4%	6.0%
Two or more races	227	3.8%	4.4%	8.8%
Hispanic Origin (of any race)	81	1.4%	4.3%	18.7%
Sex				
Female	2,880	48.3%	48.6%	50.4%
Male	3,080	51.7%	51.4%	49.6%
Total	5,960	100.0%	100.0%	100.0%

*Overlapping racial/ethnic categories mean that the percentages will not total to 100% of the population.

Source: U.S. Census Bureau, 2018-2022 American Community Survey (ACS) 5-year estimates.

Table B2.1. Household Demographics, Benson County, ND, North Dakota, and United States (2022)

	Benson County	North Dakota	United States
Total households	1,869	320,038	125,736,353
Owner-occupied housing rate	71.7%	63.2%	64.8%
Average household size (persons per household)	3.2	2.3	2.6
Median value of owned-occupied housing	\$79,300	\$232,500	\$281,900
Median monthly owner costs (with mortgage)	\$1,356	\$1,653	\$1,828
Median monthly owner costs (without mortgage)	\$443	\$551	\$584
Median gross rent	\$563	\$912	\$1,268
Median household income	\$63,220	\$73,959	\$75,149

Source: U.S. Census Bureau, 2018-2022 American Community Survey (ACS) 5-year estimates.

Table B3.1. Household Characteristics, Benson County, ND, North Dakota, and United States (2022)

Household Characteristics	Benson County Households	Percent of Benson County Households*	Percent of North Dakota Households*	Percent of United States Households*
Households with children 0-17	749	40.1%	27.8%	30.2%
Households with adults aged 65+	618	33.1%	26.7%	30.8%
Householders living alone	454	24.3%	33.2%	28.3%
Householders aged 65+ living alone	172	9.2%	11.8%	11.5%

*Overlapping household characteristics mean that the percentages of households will not total to 100% of the total number of households.
Source: U.S. Census Bureau, 2018-2022 American Community Survey (ACS) 5-year estimates.

Table B4.1. Employment by Industry, Benson County, ND (2022)

Sector	Estimated Workers	Percent of Workforce
Educational services, health care and social assistance	561	27.4%
Arts, entertainment, recreation, accommodation and food service	348	17.0%
Agriculture, forestry, fishing, hunting, and mining	212	10.4%
Public administration	197	9.6%
Retail	119	5.8%
Finance, insurance, and real estate	118	5.8%
Construction	115	5.6%
Other	378	18.5%
Total workforce	2,048	100.0%

Source: U.S. Census Bureau, 2018-2022 American Community Survey (ACS) 5-year estimates.

Table B5.1. Poverty Characteristics, Benson County, ND, North Dakota, and United States (2022)

Poverty Characteristics	Benson County Estimate	Benson County Percent*	North Dakota Percent*	United States Percent*
All persons below poverty level (% of total population)	1,614	27.2%	10.8%	12.5%
All persons below 200% poverty level (% of total population)	2,902	48.9%	24.7%	28.8%
Children aged 0-17 below poverty level (% of children 0-17)	768	37.0%	11.3%	16.7%
Adults aged 65 and older below poverty (% of adults 65 and older)	112	13.4%	9.1%	10.0%
Eligible recipients of free or reduced-price school lunch	820	78.5%	23.2%	50.8%

*Differing populations and overlapping categories mean that percentages will not total to 100%.
Sources: U.S. Census Bureau, 2018-2022 American Community Survey (ACS) 5-year estimates; 2024 County Health Rankings & Roadmaps, a program of the University of Wisconsin Population Health Institute.

Table B6.1. Educational Attainment for Persons Aged 25 and Older, Benson County, ND, North Dakota, and United States (2022)

Level of Education Attained	Benson County Estimate	Benson County Percent of Population 25 and Older	North Dakota Percent of Population 25 and Older	United States Percent of Population 25 and Older
Less than high school	431	12.8%	6.5%	10.9%
High school diploma or GED	1,018	30.2%	26.1%	26.4%
Some college or Associate's degree	1,222	36.3%	36.0%	28.5%
Bachelor's degree	495	14.7%	22.3%	20.9%
Graduate or professional degree	200	5.9%	9.1%	13.4%
<i>Total population aged 25 and older</i>	<i>3,366</i>	<i>100.0%</i>	<i>100.0%</i>	<i>100.0%</i>

Source: U.S. Census Bureau, 2018-2022 American Community Survey (ACS) 5-year estimates.

Table B7.1. Health Behaviors, Benson County, ND, North Dakota, and the United States (2021)

Health Behavior	Benson County	North Dakota	United States
Adult Smoking	27%	16%	15%
Adult Obesity	46%	36%	34%
Adult Excessive Drinking	18%	23%	18%
Alcohol-Impaired Driving Deaths	73%	39%	26%
Physical Inactivity ¹	31%	25%	23%
Access to Exercise Opportunities ²	56%	76%	84%
Poor Mental Health Days ³	4.9	4.0	4.8

Source: 2024 County Health Rankings & Roadmaps, a program of the University of Wisconsin Population Health Institute.
¹Physical Inactivity refers to the percent of adults who report participating in no physical activity outside of work.
²Access to Exercise Opportunities refers to the percent of adults who report living close to a park or recreation facility.
³The average number of self-reported mentally unhealthy days in the past 30 days.

Table B8.1. Leading Causes of Death in Benson County, ND Residents Under Age 75 (2019-2021)

Cause of Death	Deaths	Rate Per 100,000 Population Under 75
Diseases of the heart	35	190.7
Malignant neoplasms	29	158.0
Chronic liver disease and cirrhosis	23	125.3
Accidents	21	114.4
Intentional self-harm ¹	14	Unreliable

Source: 2024 County Health Rankings & Roadmaps, a program of the University of Wisconsin Population Health Institute.
¹Crude rates per 100,000 population under 75 are unreliable due to the small number of deaths.

Table B9.1. Other Health Factors, Benson County, ND, North Dakota, and United States

Description of Factor	Benson County	North Dakota	United States
Uninsured Rate, 2021	12%	9%	10%
Medicaid Coverage, 2022	41.4%	11.9%	20.4%
Unemployment Rate, 2022	2.9%	2.1%	3.7%
Low Birthweight Rate, 2016-2022	8%	7%	8%
Annual Mammogram Rate, 2021 ¹	45%	53%	43%
Annual Flu Shot Rate, 2021 ²	30%	49%	46%
Food Environment Index, 2019-2021 ³	6.4	9.1	7.7

Sources: US Census Bureau's Small Area Health Insurance Estimates (SAHIE) program, 2021; The Local Area Unemployment Statistics (LAUS) program of the Bureau of Labor Statistics, 2022; Map the Meal Gap, Feeding America, 2021; The Centers for Medicare & Medicaid Services Office of Minority Health's Mapping Medicare Disparities (MMD) Tool, 2021

¹Percentage of female Medicare enrollees who received an annual mammogram.

²Percent of Medicare enrollees who received an annual flu shot.

³The Food Environment Index is a measure of food environment that combines food insecurity rates with rates of access to healthy foods. It is scored on a scale from 0 (worst) to 10 (best).

Table B10.1. Number of Residents Per Health Care Provider in Benson County, ND, North Dakota, and the United States

Type of Provider	Benson County	North Dakota	United States
Primary Care Physicians, 2021	5,810:1	1,290:1	1,330:1
Mental Health Care Providers, 2024	2,870:1	420:1	300:1
Dentists, 2022	2,890:1	1,420:1	1,360:1

Sources: Health Resources & Services Administration, Area Health Resource Files; CMS, National Provider Identification Registry.

Table B11.1. National Risk Index Percentiles for Benson County, ND when compared to North Dakota Counties and U.S. Counties (2024)

Index	Percentile within North Dakota	U.S. Percentile
Expected Annual Loss	22.6	14.8
Social Vulnerability	96.2	81.4
Community Resilience	7.5	9.8
<i>National Risk Index</i>	<i>43.4</i>	<i>20.1</i>

Note: The Risk Index can be read as "43.4% of counties in North Dakota have a lower Risk Index than Benson County; 20.1% of U.S. counties have a lower Risk Index than Benson County."

Sources: FEMA, National Risk Index; CDC/ATSDR Social Vulnerability Index 2022; University of South Carolina's Hazards and Vulnerability Research Institute (HVRI)'s Baseline Resilience Indicators for Communities (HVRI BRIC).

Table B1.2. Population Estimates, Eddy County, ND, North Dakota, and United States, by Age, Race/Ethnicity, and Sex (2022)

Age Group	Eddy County Population	Eddy County Percentages	North Dakota Percentages	United States Percentages
0-4	152	6.5%	6.7%	5.7%
5-17	355	15.1%	16.9%	16.4%
18-24	128	5.5%	11.3%	9.4%
25-44	503	21.4%	27.1%	26.6%
45-64	558	23.8%	22.2%	25.3%
65 and older	649	27.7%	15.9%	16.5%
<i>Total</i>	<i>2,345</i>	<i>100.0%</i>	<i>100.0%</i>	<i>100.0%</i>
Race and Ethnicity*				
White, non-Hispanic alone	2,121	90.4%	83.0%	58.9%
American Indian and Alaska Native alone	96	4.1%	4.7%	0.8%
Asian alone	0	0.0%	1.6%	5.8%
Black or African American alone	0	0.0%	3.2%	12.5%
Native Hawaiian and Pacific Islander alone	1	0.0%	0.2%	0.2%
Some other race alone	9	0.4%	1.4%	6.0%
Two or more races	106	4.5%	4.4%	8.8%
Hispanic Origin (of any race)	63	2.7%	4.3%	18.7%
Sex				
Female	1,120	47.8%	48.6%	50.4%
Male	1,225	52.2%	51.4%	49.6%
<i>Total</i>	<i>2,345</i>	<i>100.0%</i>	<i>100.0%</i>	<i>100.0%</i>

*Overlapping racial/ethnic categories mean that the percentages will not total to 100% of the population.
Source: U.S. Census Bureau, 2018-2022 American Community Survey (ACS) 5-year estimates.

Table B2.2. Household Demographics, Eddy County, ND, North Dakota, and United States (2022)

Item	Eddy County	North Dakota	United States
Total households	1,077	320,038	125,736,353
Owner-occupied housing rate	69.5%	63.2%	64.8%
Average household size (persons per household)	2.1	2.3	2.6
Median value of owned-occupied housing	\$108,400	\$232,500	\$281,900
Median monthly owner costs (with mortgage)	\$1,019	\$1,653	\$1,828
Median monthly owner costs (without mortgage)	\$446	\$551	\$584
Median gross rent	\$555	\$912	\$1,268
Median household income	\$50,375	\$73,959	\$75,149

Source: U.S. Census Bureau, 2018-2022 American Community Survey (ACS) 5-year estimates.

Table B3.2. Household Characteristics, Eddy County, ND, North Dakota, and United States (2022)

Household Characteristics	Eddy County Households	Percent of Eddy County Households*	Percent of North Dakota Households*	Percent of United States Households*
Households with children aged 0-17	232	21.5%	27.8%	30.2%
Households with adults aged 65+	443	41.1%	26.7%	30.8%
Householders living alone	464	43.1%	33.2%	28.3%
Householders aged 65+ living alone	229	21.3%	11.8%	11.5%
*Overlapping household characteristics mean that the percentages of households will not total to 100% of the total number of households. Source: U.S. Census Bureau, 2018-2022 American Community Survey (ACS) 5-year estimates.				

Table B4.2. Employment by Industry, Eddy County, ND (2022)

Sector	Estimated Workers	Percent of Workforce
Educational services, health care and social assistance	299	27.1%
Agriculture, forestry, fishing, hunting, and mining	194	17.6%
Retail	131	11.9%
Manufacturing	89	8.1%
Construction	82	7.4%
Arts, entertainment, recreation, accommodation and food service	59	5.3%
Other	251	22.7%
Total workforce	1,105	100.0%
Source: U.S. Census Bureau, 2018-2022 American Community Survey (ACS) 5-year estimates.		

Table B5.2. Poverty Characteristics, Eddy County, ND, North Dakota, and United States (2022)

Poverty Characteristics	Eddy County Estimate	Eddy County Percent*	North Dakota Percent*	United States Percent*
All persons below poverty level (% of total population)	275	12.3%	10.8%	12.5%
All persons below 200% poverty level (% of total population)	790	35.4%	24.7%	28.8%
Children aged 0-17 below poverty level (% of children 0-17)	48	10.2%	11.3%	16.7%
Adults aged 65 and older below poverty level (% of adults 65 and older)	78	13.5%	9.1%	10.0%
Eligible recipients of free or reduced-price school lunch	79	22.8%	23.2%	50.8%
*Differing populations and overlapping categories mean that percentages will not total to 100%. Sources: U.S. Census Bureau, 2018-2022 American Community Survey (ACS) 5-year estimates; 2024 County Health Rankings & Roadmaps, a program of the University of Wisconsin Population Health Institute.				

Table B6.2. Educational Attainment for Persons Aged 25 and Older, Eddy County, ND, North Dakota, and United States (2022)

Level of Education Attained	Eddy County Estimate	Eddy County Percent of Population 25 and Older	North Dakota Percent of Population 25 and Older	United States Percent of Population 25 and Older
Less than high school	136	8.0%	6.5%	10.9%
High school diploma or GED	512	29.9%	26.1%	26.4%
Some college or Associate's degree	602	35.2%	36.0%	28.5%
Bachelor's degree	341	19.9%	22.3%	20.9%
Graduate or professional degree	119	7.0%	9.1%	13.4%
<i>Total population aged 25 and older</i>	<i>1,710</i>	<i>100.0%</i>	<i>100.0%</i>	<i>100.0%</i>

Source: U.S. Census Bureau, 2018-2022 American Community Survey (ACS) 5-year estimates.

Table B7.2. Health Behaviors, Eddy County, ND, North Dakota, and the United States (2021)

Health Behavior	Eddy County	North Dakota	United States
Adult Smoking	20%	16%	15%
Adult Obesity	41%	36%	34%
Adult Excessive Drinking	18%	23%	18%
Alcohol-Impaired Driving Deaths	100%	39%	26%
Physical Inactivity ¹	27%	25%	23%
Access to Exercise Opportunities ²	64%	76%	84%
Poor Mental Health Days ³	4.2	4.0	4.8

Source: 2024 County Health Rankings & Roadmaps, a program of the University of Wisconsin Population Health Institute.

¹Physical Inactivity refers to the percent of adults who report participating in no physical activity outside of work.

²Access to Exercise Opportunities refers to the percent of adults who report living close to a park or recreation facility.

³The average number of self-reported mentally unhealthy days in the past 30 days.

Table B8.2. Leading Causes of Death in Eddy County, ND Residents Under Age 75 (2019-2021)

Cause of Death	Deaths	Rate Per 100,000 Population Under 75
Malignant Neoplasms	13	Unreliable

Source: 2024 County Health Rankings & Roadmaps, a program of the University of Wisconsin Population Health Institute.

Crude rates per 100,000 population under 75 are unreliable due to the small number of deaths.

Table B9.2. Other Health Factors, Eddy County, ND, North Dakota, and United States

Description of Factor	Eddy County	North Dakota	United States
Uninsured Rate, 2021	10%	9%	10%
Medicaid Coverage, 2022	17.3%	11.9%	20.4%
Unemployment Rate, 2022	2.9%	2.1%	3.7%
Low Birthweight Rate, 2016-2022	8%	7%	8%
Annual Mammogram Rate, 2021 ¹	59%	53%	43%
Annual Flu Shot Rate, 2021 ²	23%	49%	46%
Food Environment Index, 2019-2021 ³	8.1	9.1	7.7

Sources: US Census Bureau's Small Area Health Insurance Estimates (SAHIE) program, 2021; The Local Area Unemployment Statistics (LAUS) program of the Bureau of Labor Statistics, 2022; Map the Meal Gap, Feeding America, 2021; The Centers for Medicare & Medicaid Services Office of Minority Health's Mapping Medicare Disparities (MMD) Tool, 2021

¹Percentage of female Medicare enrollees who received an annual mammogram.

²Percent of Medicare enrollees who received an annual flu shot.

³The Food Environment Index is a measure of food environment that combines food insecurity rates with rates of access to healthy foods. It is scored on a scale from 0 (worst) to 10 (best).

Table B10.2. Number of Residents Per Health Care Provider in Eddy County, ND, North Dakota, and the United States

Type of Provider	Eddy County	North Dakota	United States
Primary Care Physicians, 2021	-	1,290:1	1,330:1
Mental Health Care Providers, 2024	-	420:1	300:1
Dentists, 2022	770:1	1,420:1	1,360:1

Sources: Health Resources & Services Administration, Area Health Resource Files; CMS, National Provider Identification Registry.

Table B11. National Risk Index Percentiles for Eddy County, ND when compared to North Dakota Counties and U.S. Counties (2024)

Index	Percentile within North Dakota	U.S. Percentile
Expected Annual Loss	15.1	9.2
Social Vulnerability	86.8	42.6
Community Resilience	35.8	52.7
<i>National Risk Index</i>	<i>18.9</i>	<i>9.8</i>

Note: The Risk Index can be read as "18.9% of counties in North Dakota have a lower Risk Index than Eddy County; 9.8% of U.S. counties have a lower Risk Index than Eddy County."

Sources: FEMA, National Risk Index; CDC/ATSDR Social Vulnerability Index 2022; University of South Carolina's Hazards and Vulnerability Research Institute (HVRI)'s Baseline Resilience Indicators for Communities (HVRI BRIC).

Table B1.3. Population Estimates, Pierce County, ND, North Dakota, and United States, by Age, Race/Ethnicity, and Sex (2022)

Age Group	Pierce County Population	Pierce County Percentages	North Dakota Percentages	United States Percentages
0-4	175	4.4%	6.7%	5.7%
5-17	706	17.7%	16.9%	16.4%
18-24	263	6.6%	11.3%	9.4%
25-44	879	22.0%	27.1%	26.6%
45-64	993	24.8%	22.2%	25.3%
65 and older	983	24.6%	15.9%	16.5%
<i>Total</i>	<i>3,999</i>	<i>100.0%</i>	<i>100.0%</i>	<i>100.0%</i>
Race and Ethnicity*				
White, non-Hispanic alone	3,713	92.8%	83.0%	58.9%
American Indian and Alaska Native alone	111	2.8%	4.7%	0.8%
Asian alone	65	1.6%	1.6%	5.8%
Black or African American alone	10	0.3%	3.2%	12.5%
Native Hawaiian and Pacific Islander alone	0	0.0%	0.2%	0.2%
Some other race alone	22	0.6%	1.4%	6.0%
Two or more races	68	1.7%	4.4%	8.8%
Hispanic Origin (of any race)	49	1.2%	4.3%	18.7%
Sex				
Female	2,004	50.1%	48.6%	50.4%
Male	1,995	49.9%	51.4%	49.6%
<i>Total</i>	<i>3,999</i>	<i>100.0%</i>	<i>100.0%</i>	<i>100.0%</i>

*Overlapping racial/ethnic categories mean that the percentages will not total to 100% of the population.
Source: U.S. Census Bureau, 2018-2022 American Community Survey (ACS) 5-year estimates.

Table B.3. Household Demographics, Pierce County, ND, North Dakota, and United States (2022)

Item	Pierce County	North Dakota	United States
Total households	1,689	320,038	125,736,353
Owner-occupied housing rate	80.2%	63.2%	64.8%
Average household size (persons per household)	2.3	2.3	2.6
Median value of owned-occupied housing	\$154,400	\$232,500	\$281,900
Median monthly owner costs (with mortgage)	\$1,329	\$1,653	\$1,828
Median monthly owner costs (without mortgage)	\$578	\$551	\$584
Median gross rent	\$757	\$912	\$1,268
Median household income	\$59,583	\$73,959	\$75,149
Source: U.S. Census Bureau, 2018-2022 American Community Survey (ACS) 5-year estimates.			

Table B3.3. Household Characteristics, Pierce County, ND, North Dakota, and United States (2022)

Household Characteristics	Pierce County Households	Percent of Pierce County Households*	Percent of North Dakota Households*	Percent of United States Households*
Households with children aged 0-17	401	23.7%	27.8%	30.2%
Households with adults aged 65+	641	38.0%	26.7%	30.8%
Householders living alone	588	34.8%	33.2%	28.3%
Householders aged 65+ living alone	284	16.8%	11.8%	11.5%

*Overlapping household characteristics mean that the percentages of households will not total to 100% of the total number of households.
Source: U.S. Census Bureau, 2018-2022 American Community Survey (ACS) 5-year estimates.

Table B4.3. Employment by Industry, Pierce County, ND (2022)

Sector	Estimated Workers	Percent of Workforce
Educational services, health care and social assistance	545	29.3%
Agriculture, forestry, fishing, hunting, and mining	342	18.4%
Retail	237	12.7%
Transportation, warehousing, and utilities	100	5.4%
Manufacturing	97	5.2%
Construction	96	5.2%
Other	442	23.8%
<i>Total workforce</i>	1,859	100.0%

Source: U.S. Census Bureau, 2018-2022 American Community Survey (ACS) 5-year estimates.

Table B5.3. Poverty Characteristics, Pierce County, ND, North Dakota, and United States (2022)

Poverty Characteristics	Pierce County Estimate	Pierce County Percent*	North Dakota Percent*	United States Percent*
All persons below poverty level (% of total population)	429	11.2%	10.8%	12.5%
All persons below 200% poverty level (% of total population)	980	25.6%	24.7%	28.8%
Children aged 0-17 below poverty level (% of children 0-17)	126	14.5%	11.3%	16.7%
Adults aged 65 and older below poverty level (% of adults 65 and older)	70	7.6%	9.1%	10.0%
Eligible recipients of free or reduced-price school lunch	84	13.7%	23.2%	50.8%

*Differing populations and overlapping categories mean that percentages will not total to 100%.
Sources: U.S. Census Bureau, 2018-2022 American Community Survey (ACS) 5-year estimates; 2024 County Health Rankings & Roadmaps, a program of the University of Wisconsin Population Health Institute.

Table B6.3. Educational Attainment for Persons Aged 25 and Older, Pierce County, ND, North Dakota, and United States (2022)

Level of Education Attained	Pierce County Estimate	Pierce County Percent of Population 25 and Older	North Dakota Percent of Population 25 and Older	United States Percent of Population 25 and Older
Less than high school	195	6.8%	6.5%	10.9%
High school diploma or GED	844	29.6%	26.1%	26.4%
Some college or Associate's degree	977	34.2%	36.0%	28.5%
Bachelor's degree	574	20.1%	22.3%	20.9%
Graduate or professional degree	265	9.3%	9.1%	13.4%
<i>Total population aged 25 and older</i>	<i>2,855</i>	<i>100.0%</i>	<i>100.0%</i>	<i>100.0%</i>

Source: U.S. Census Bureau, 2018-2022 American Community Survey (ACS) 5-year estimates.

Table B7.3. Health Behaviors, Pierce County, ND, North Dakota, and the United States (2021)

Health Behavior	Pierce County	North Dakota	United States
Adult Smoking	16%	16%	15%
Adult Obesity	37%	36%	34%
Adult Excessive Drinking	19%	23%	18%
Alcohol-Impaired Driving Deaths	50%	39%	26%
Physical Inactivity ¹	25%	25%	23%
Access to Exercise Opportunities ²	70%	76%	84%
Poor Mental Health Days ³	3.9	4.0	4.8

Source: 2024 County Health Rankings & Roadmaps, a program of the University of Wisconsin Population Health Institute.

¹Physical Inactivity refers to the percent of adults who report participating in no physical activity outside of work.

²Access to Exercise Opportunities refers to the percent of adults who report living close to a park or recreation facility.

³The average number of self-reported mentally unhealthy days in the past 30 days.

Table B8.3: Due to its small population, leading causes of death in Pierce County cannot be estimated.

Table B9.3. Other Health Factors, Pierce County, ND, North Dakota, and United States

Description of Factor	Pierce County	North Dakota	United States
Uninsured Rate, 2021	6%	9%	10%
Medicaid Coverage, 2022	12.5%	11.9%	20.4%
Unemployment Rate, 2022	2.6%	2.1%	3.7%
Low Birthweight Rate, 2016-2022	9%	7%	8%
Annual Mammogram Rate, 2021 ¹	57%	53%	43%
Annual Flu Shot Rate, 2021 ²	25%	49%	46%
Food Environment Index, 2019-2021 ³	9.2	9.1	7.7

Sources: US Census Bureau's Small Area Health Insurance Estimates (SAHIE) program, 2021; The Local Area Unemployment Statistics (LAUS) program of the Bureau of Labor Statistics, 2022; Map the Meal Gap, Feeding America, 2021; The Centers for Medicare & Medicaid Services Office of Minority Health's Mapping Medicare Disparities (MMD) Tool, 2021

¹Percentage of female Medicare enrollees who received an annual mammogram.

²Percent of Medicare enrollees who received an annual flu shot.

³The Food Environment Index is a measure of food environment that combines food insecurity rates with rates of access to healthy foods. It is scored on a scale from 0 (worst) to 10 (best).

Table B10.3. Number of Residents Per Health Care Provider in Pierce County, ND, North Dakota, and the United States

Type of Provider	Pierce County	North Dakota	United States
Primary Care Physicians, 2021	3,950:1	1,290:1	1,330:1
Mental Health Care Providers, 2024	1,950:1	420:1	300:1
Dentists, 2022	790:1	1,420:1	1,360:1

Sources: Health Resources & Services Administration, Area Health Resource Files; CMS, National Provider Identification Registry.

Table B11.3. National Risk Index Percentiles for Pierce County, ND when compared to North Dakota Counties and U.S. Counties (2024)

Index	Percentile within North Dakota	U.S. Percentile
Expected Annual Loss	24.5	15.0
Social Vulnerability	69.8	22.5
Community Resilience	45.3	61.7
<i>National Risk Index</i>	<i>24.5</i>	<i>12.8</i>

Note: The Risk Index can be read as "24.5% of counties in North Dakota have a lower Risk Index than Pierce County; 12.8% of U.S. counties have a lower Risk Index than Pierce County."

Sources: FEMA, National Risk Index; CDC/ATSDR Social Vulnerability Index 2022; University of South Carolina's Hazards and Vulnerability Research Institute (HVRI)'s Baseline Resilience Indicators for Communities (HVRI BRIC).

Appendix C: Survey Instrument

Please note: the instrument below has been formatted to allow for mail completion and may look slightly different than presented online. The questions are the same.

COMMUNITY HEALTH NEEDS ASSESSMENT 2024

Every three years, we conduct a Community Health Needs Assessment (CHNA) to better understand health and well-being at individual and community levels. This survey will ask you a few questions about the challenges in your community, and how you think they should be approached. It will also ask a few questions about you, so we can understand more about your individual experiences as they relate to your health and well-being. There are no wrong answers to these questions, and your answers are anonymous. Your name will not be on any reports, and your answers will be grouped with those from other people who respond.

This survey will take about 10 minutes to complete. Your participation is voluntary. If you do not want to participate at all, or if you do not want to answer a particular question, that's okay. If you choose to do the survey, your answers will be kept anonymous and confidential and will be used only to answer questions related to the purpose of this study. What we learn from the survey will be used to plan communication strategies to help people in your community.

You have the option to include your email address in a gift card prize draw! Simply complete the survey, include your email address at the end, and return the survey to us for your chance to win!

Your contact information will not be used for any other purpose than the prize draw. It will not be used in analysis or reporting.

If you have any trouble with any question, please refer to the following resources:

Center for Social Research

Nancy Hodur	nancy.hodur@ndsu.edu	(701) 231-8621
Kaeleigh Schroeder	kaeleigh.schroeder@ndsu.edu	
Avi Slone	avram.slone@ndsu.edu	

CommonSpirit Healthy Communities liaison

Ashley Carroll	ashley.carroll@commonspirit.org
----------------	---------------------------------

Completing the survey means that you give your consent to participate in this Community Health Needs Assessment.

What is your zip code?

What is the state where you live?

What is the county where you live?

Please indicate your level of agreement for each of the following statements about the people in your community.

	Strongly Disagree	Somewhat Disagree	Neither Agree nor Disagree	Somewhat Agree	Strongly Agree	I don't know
My community is culturally diverse	<input type="checkbox"/>	<input type="checkbox"/>	<input type="checkbox"/>	<input type="checkbox"/>	<input type="checkbox"/>	<input type="checkbox"/>
People feel welcome and accepted in my community	<input type="checkbox"/>	<input type="checkbox"/>	<input type="checkbox"/>	<input type="checkbox"/>	<input type="checkbox"/>	<input type="checkbox"/>
There is a sense of civic responsibility and engagement in my community	<input type="checkbox"/>	<input type="checkbox"/>	<input type="checkbox"/>	<input type="checkbox"/>	<input type="checkbox"/>	<input type="checkbox"/>
The people in my community have a shared vision and community goals	<input type="checkbox"/>	<input type="checkbox"/>	<input type="checkbox"/>	<input type="checkbox"/>	<input type="checkbox"/>	<input type="checkbox"/>

Is there anything you would like to add about the people in your community?

Please indicate your level of agreement for each of the following statements about services in your community.

	Strongly Disagree	Somewhat Disagree	Neither Agree nor Disagree	Somewhat Agree	Strongly Agree	I don't know
My community has adequate opportunities for recreation and leisure for all ages	<input type="checkbox"/>	<input type="checkbox"/>	<input type="checkbox"/>	<input type="checkbox"/>	<input type="checkbox"/>	<input type="checkbox"/>
My community has a thriving business district with access to needed goods and services	<input type="checkbox"/>	<input type="checkbox"/>	<input type="checkbox"/>	<input type="checkbox"/>	<input type="checkbox"/>	<input type="checkbox"/>
My community provides adequate public services like snow removal, garbage collection, or recycling	<input type="checkbox"/>	<input type="checkbox"/>	<input type="checkbox"/>	<input type="checkbox"/>	<input type="checkbox"/>	<input type="checkbox"/>
My community has adequate child care services	<input type="checkbox"/>	<input type="checkbox"/>	<input type="checkbox"/>	<input type="checkbox"/>	<input type="checkbox"/>	<input type="checkbox"/>
My community has adequate senior services	<input type="checkbox"/>	<input type="checkbox"/>	<input type="checkbox"/>	<input type="checkbox"/>	<input type="checkbox"/>	<input type="checkbox"/>
My community has a quality education system	<input type="checkbox"/>	<input type="checkbox"/>	<input type="checkbox"/>	<input type="checkbox"/>	<input type="checkbox"/>	<input type="checkbox"/>
My community has adequate public transportation services	<input type="checkbox"/>	<input type="checkbox"/>	<input type="checkbox"/>	<input type="checkbox"/>	<input type="checkbox"/>	<input type="checkbox"/>
My community has adequate employment opportunities that pay a livable wage	<input type="checkbox"/>	<input type="checkbox"/>	<input type="checkbox"/>	<input type="checkbox"/>	<input type="checkbox"/>	<input type="checkbox"/>
My community has adequate law enforcement.	<input type="checkbox"/>	<input type="checkbox"/>	<input type="checkbox"/>	<input type="checkbox"/>	<input type="checkbox"/>	<input type="checkbox"/>
My community has enough affordable housing for everyone who needs it	<input type="checkbox"/>	<input type="checkbox"/>	<input type="checkbox"/>	<input type="checkbox"/>	<input type="checkbox"/>	<input type="checkbox"/>
My community has adequate access to healthy and affordable foods	<input type="checkbox"/>	<input type="checkbox"/>	<input type="checkbox"/>	<input type="checkbox"/>	<input type="checkbox"/>	<input type="checkbox"/>

Is there anything you would like to add about services in your community?

How concerned are you about each of the following in your community?

	Not concerned at all	Slightly concerned	Somewhat concerned	Very concerned	I don't know	Not applicable to my community
Substance misuse (alcohol, prescription drugs, tobacco or vaping, illicit or street drugs)	<input type="checkbox"/>	<input type="checkbox"/>	<input type="checkbox"/>	<input type="checkbox"/>	<input type="checkbox"/>	<input type="checkbox"/>
Mental health (anxiety, stress, depression)	<input type="checkbox"/>	<input type="checkbox"/>	<input type="checkbox"/>	<input type="checkbox"/>	<input type="checkbox"/>	<input type="checkbox"/>
Suicide	<input type="checkbox"/>	<input type="checkbox"/>	<input type="checkbox"/>	<input type="checkbox"/>	<input type="checkbox"/>	<input type="checkbox"/>
Access to healthy foods	<input type="checkbox"/>	<input type="checkbox"/>	<input type="checkbox"/>	<input type="checkbox"/>	<input type="checkbox"/>	<input type="checkbox"/>
Food insecurity, hunger	<input type="checkbox"/>	<input type="checkbox"/>	<input type="checkbox"/>	<input type="checkbox"/>	<input type="checkbox"/>	<input type="checkbox"/>
Poverty in my community	<input type="checkbox"/>	<input type="checkbox"/>	<input type="checkbox"/>	<input type="checkbox"/>	<input type="checkbox"/>	<input type="checkbox"/>
Sexually transmitted diseases	<input type="checkbox"/>	<input type="checkbox"/>	<input type="checkbox"/>	<input type="checkbox"/>	<input type="checkbox"/>	<input type="checkbox"/>
Crime in my community	<input type="checkbox"/>	<input type="checkbox"/>	<input type="checkbox"/>	<input type="checkbox"/>	<input type="checkbox"/>	<input type="checkbox"/>
Availability of long-term care or assisted living facilities	<input type="checkbox"/>	<input type="checkbox"/>	<input type="checkbox"/>	<input type="checkbox"/>	<input type="checkbox"/>	<input type="checkbox"/>
Availability of elder care services to support independent living, or aging in place	<input type="checkbox"/>	<input type="checkbox"/>	<input type="checkbox"/>	<input type="checkbox"/>	<input type="checkbox"/>	<input type="checkbox"/>
Obesity or overweightness	<input type="checkbox"/>	<input type="checkbox"/>	<input type="checkbox"/>	<input type="checkbox"/>	<input type="checkbox"/>	<input type="checkbox"/>
Negative effects of social media	<input type="checkbox"/>	<input type="checkbox"/>	<input type="checkbox"/>	<input type="checkbox"/>	<input type="checkbox"/>	<input type="checkbox"/>

Are there other issues in your community that you are concerned about?

How concerned are you about the following types of violence in your community?

	Not concerned at all	Slightly concerned	Somewhat concerned	Very concerned	I don't know	Not applicable to my community
Cyber bullying	<input type="checkbox"/>	<input type="checkbox"/>	<input type="checkbox"/>	<input type="checkbox"/>	<input type="checkbox"/>	<input type="checkbox"/>
Child abuse or neglect	<input type="checkbox"/>	<input type="checkbox"/>	<input type="checkbox"/>	<input type="checkbox"/>	<input type="checkbox"/>	<input type="checkbox"/>
Intimate partner violence	<input type="checkbox"/>	<input type="checkbox"/>	<input type="checkbox"/>	<input type="checkbox"/>	<input type="checkbox"/>	<input type="checkbox"/>
Emotional abuse (including: intimidation, isolation, verbal threats, economic abuse/withholding funds)	<input type="checkbox"/>	<input type="checkbox"/>	<input type="checkbox"/>	<input type="checkbox"/>	<input type="checkbox"/>	<input type="checkbox"/>
Sexual abuse or assault	<input type="checkbox"/>	<input type="checkbox"/>	<input type="checkbox"/>	<input type="checkbox"/>	<input type="checkbox"/>	<input type="checkbox"/>
Stalking	<input type="checkbox"/>	<input type="checkbox"/>	<input type="checkbox"/>	<input type="checkbox"/>	<input type="checkbox"/>	<input type="checkbox"/>
Verbal threats or harassment	<input type="checkbox"/>	<input type="checkbox"/>	<input type="checkbox"/>	<input type="checkbox"/>	<input type="checkbox"/>	<input type="checkbox"/>
Gun violence	<input type="checkbox"/>	<input type="checkbox"/>	<input type="checkbox"/>	<input type="checkbox"/>	<input type="checkbox"/>	<input type="checkbox"/>

Are there other types of violence in your community that you are concerned about?

Please indicate your level of agreement with the following issues related to medical services in your community.

	Strongly Disagree	Somewh at Disagree	Neither Agree nor Disagree	Somewh at Agree	Strongly Agree	I don't know
It is easy to get an appointment for health care services in my community	<input type="checkbox"/>	<input type="checkbox"/>	<input type="checkbox"/>	<input type="checkbox"/>	<input type="checkbox"/>	<input type="checkbox"/>
My community has adequate primary care providers and nurses	<input type="checkbox"/>	<input type="checkbox"/>	<input type="checkbox"/>	<input type="checkbox"/>	<input type="checkbox"/>	<input type="checkbox"/>
My community has adequate health care services to meet my health care needs	<input type="checkbox"/>	<input type="checkbox"/>	<input type="checkbox"/>	<input type="checkbox"/>	<input type="checkbox"/>	<input type="checkbox"/>
My community has adequate dental care providers	<input type="checkbox"/>	<input type="checkbox"/>	<input type="checkbox"/>	<input type="checkbox"/>	<input type="checkbox"/>	<input type="checkbox"/>
My community has adequate vision care providers	<input type="checkbox"/>	<input type="checkbox"/>	<input type="checkbox"/>	<input type="checkbox"/>	<input type="checkbox"/>	<input type="checkbox"/>
My community has adequate mental health services	<input type="checkbox"/>	<input type="checkbox"/>	<input type="checkbox"/>	<input type="checkbox"/>	<input type="checkbox"/>	<input type="checkbox"/>
My community has adequate access to emergency response services such as ambulance or fire fighters	<input type="checkbox"/>	<input type="checkbox"/>	<input type="checkbox"/>	<input type="checkbox"/>	<input type="checkbox"/>	<input type="checkbox"/>
I can easily navigate the health care system in my community	<input type="checkbox"/>	<input type="checkbox"/>	<input type="checkbox"/>	<input type="checkbox"/>	<input type="checkbox"/>	<input type="checkbox"/>
I receive quality health care in my community	<input type="checkbox"/>	<input type="checkbox"/>	<input type="checkbox"/>	<input type="checkbox"/>	<input type="checkbox"/>	<input type="checkbox"/>
In my community, care is well-coordinated across providers and services	<input type="checkbox"/>	<input type="checkbox"/>	<input type="checkbox"/>	<input type="checkbox"/>	<input type="checkbox"/>	<input type="checkbox"/>

Do you have any other concerns about access to health care services in your community?

Which preventative health care measures have you received in the last year? Select all that apply.

- | | |
|--|---|
| <input type="checkbox"/> Vaccinations | <input type="checkbox"/> Counseling for tobacco use, alcohol use, weight loss, or behavioral health |
| <input type="checkbox"/> Annual physical exam | <input type="checkbox"/> Depression screening |
| <input type="checkbox"/> Mammogram | <input type="checkbox"/> STD/STI screening |
| <input type="checkbox"/> Colonoscopy | <input type="checkbox"/> Vision exam |
| <input type="checkbox"/> Blood pressure or cholesterol screening | <input type="checkbox"/> Dental exam/annual checkup |

To what degree are each of the following a barrier to your ability to access health care services?

	Not at all a barrier	Somewhat of a barrier	Extreme barrier	I don't know
Transportation to health services locations	<input type="checkbox"/>	<input type="checkbox"/>	<input type="checkbox"/>	<input type="checkbox"/>
Availability of local services to meet my health care needs	<input type="checkbox"/>	<input type="checkbox"/>	<input type="checkbox"/>	<input type="checkbox"/>
Ability to see the same provider over time	<input type="checkbox"/>	<input type="checkbox"/>	<input type="checkbox"/>	<input type="checkbox"/>
Scheduling health care services within clinic hours	<input type="checkbox"/>	<input type="checkbox"/>	<input type="checkbox"/>	<input type="checkbox"/>
The price of prescription drugs, even with insurance	<input type="checkbox"/>	<input type="checkbox"/>	<input type="checkbox"/>	<input type="checkbox"/>
The price of health care services (such as co-payments or deductibles), even with health insurance	<input type="checkbox"/>	<input type="checkbox"/>	<input type="checkbox"/>	<input type="checkbox"/>
Communication or language barriers	<input type="checkbox"/>	<input type="checkbox"/>	<input type="checkbox"/>	<input type="checkbox"/>
Difficulty using or accessing technology to communicate with provider or system	<input type="checkbox"/>	<input type="checkbox"/>	<input type="checkbox"/>	<input type="checkbox"/>
Concerns about confidentiality	<input type="checkbox"/>	<input type="checkbox"/>	<input type="checkbox"/>	<input type="checkbox"/>
Disability accommodations	<input type="checkbox"/>	<input type="checkbox"/>	<input type="checkbox"/>	<input type="checkbox"/>
Health insurance coverage	<input type="checkbox"/>	<input type="checkbox"/>	<input type="checkbox"/>	<input type="checkbox"/>
The length of time to see a provider, from making an appointment to attending the appointment	<input type="checkbox"/>	<input type="checkbox"/>	<input type="checkbox"/>	<input type="checkbox"/>
Distance to access care	<input type="checkbox"/>	<input type="checkbox"/>	<input type="checkbox"/>	<input type="checkbox"/>

Are there other barriers to your ability to access health care in your community?

Do you currently have a primary care doctor?

- ☐ Yes
- ☐ No
- ☐ Prefer not to respond

Where do you find out about health information? Select all that apply.

- | | |
|--|---|
| <input type="checkbox"/> Primary care provider | <input type="checkbox"/> My employer |
| <input type="checkbox"/> Other health care providers | <input type="checkbox"/> Newspaper |
| <input type="checkbox"/> Public health professionals | <input type="checkbox"/> Radio |
| <input type="checkbox"/> Internet sources | <input type="checkbox"/> Other (please specify _____) |
| <input type="checkbox"/> Word of mouth | |
| <input type="checkbox"/> Advertising, such as TV commercials | |

What type of health insurance coverage do you currently have? Select all that apply.

- ☐ Commercial private health insurance (coverage purchased by you or your employer)
- ☐ Medicare
- ☐ Medicaid etc.)
- ☐ Indian Health Service (IHS)
- ☐ Military (Tricare, Champus, VA)
- ☐ Other (please specify) _____
- ☐ No health insurance (**GO TO Q3.7**)
- ☐ Prefer not to say

Why do you NOT have health insurance? Select all that apply.

DO NOT RESPOND IF YOU DO HAVE HEALTH INSURANCE

- ☐ Too expensive
- ☐ Too difficult or complex to obtain health insurance
- ☐ I have a pre-existing condition that is not covered
- ☐ I am healthy and do not need insurance
- ☐ I do not qualify for Medicaid
- ☐ I was disenrolled from Medicaid
- ☐ Another reason (please specify) _____
- ☐ Prefer not to say

What specific health care services, if any, do you think should be added locally?

Did you move to your community in the past year?

- ☐ Yes
☐ No (**GO TO Q4.3**)
☐ Prefer not to respond (**GO TO Q4.3**)

How difficult was it to do the following?

	Not difficult at all	Slightly difficult	Somewhat difficult	Very difficult	I don't know/I'm not sure	Not applicable to me
Enroll children in school	<input type="checkbox"/>	<input type="checkbox"/>	<input type="checkbox"/>	<input type="checkbox"/>	<input type="checkbox"/>	<input type="checkbox"/>
Find housing	<input type="checkbox"/>	<input type="checkbox"/>	<input type="checkbox"/>	<input type="checkbox"/>	<input type="checkbox"/>	<input type="checkbox"/>
Find healthcare	<input type="checkbox"/>	<input type="checkbox"/>	<input type="checkbox"/>	<input type="checkbox"/>	<input type="checkbox"/>	<input type="checkbox"/>
Find a job	<input type="checkbox"/>	<input type="checkbox"/>	<input type="checkbox"/>	<input type="checkbox"/>	<input type="checkbox"/>	<input type="checkbox"/>
Find childcare	<input type="checkbox"/>	<input type="checkbox"/>	<input type="checkbox"/>	<input type="checkbox"/>	<input type="checkbox"/>	<input type="checkbox"/>

Have you experienced discrimination in the past 12 months?

- ☐ Yes
☐ No (**GO TO Q4.6**)
☐ Prefer not to respond (**GO TO Q4.6**)

In what area(s) have you experienced discrimination? Select all that apply.

- | | |
|---|--|
| <input type="checkbox"/> Race | <input type="checkbox"/> Disability |
| <input type="checkbox"/> Ethnicity | <input type="checkbox"/> Religion |
| <input type="checkbox"/> Sex | <input type="checkbox"/> Another area (specify: _____) |
| <input type="checkbox"/> Gender identity | <input type="checkbox"/> _____ |
| <input type="checkbox"/> Sexual orientation | <input type="checkbox"/> Prefer not to say |
| <input type="checkbox"/> Age | |
| <input type="checkbox"/> Weight | |

In which of the following situations did you experience discrimination? Select all that apply.

- ☐ Applying for a job
☐ At a job, work or my place of employment
☐ Receiving medical care
☐ Looking for housing
☐ Applying for a credit card, bank loan, or mortgage
☐ Shopping at a store or eating at a restaurant
☐ Applying for social services or public assistance
☐ Interacting with the police
☐ Appearing in court
☐ Another area (specify) _____
☐ Prefer not to say

How difficult is it for you to pay for heating, housing, or medical care?

- ☐ Not difficult at all
- ☐ Slightly difficult
- ☐ Somewhat difficult
- ☐ Very difficult
- ☐ I don't know/I'm not sure

In the last month, have you had to sleep outside, in a shelter, in your car, at a family member or friend's house, or in a place not meant for sleeping?

- ☐ Yes
- ☐ No
- ☐ Prefer not to say

What is your age?

What is your gender?

- ☐ Male
- ☐ Female
- ☐ Non-binary/third gender
- ☐ Other (please describe: _____)
- ☐ Prefer not to say

Which one of these groups best represents your race? Select all that apply.

- ☐ American Indian or Alaska Native
- ☐ Black or African American
- ☐ Asian
- ☐ Native Hawaiian or Pacific Islander
- ☐ Two or more races
- ☐ White
- ☐ Other (please describe: _____)

Do you identify as Hispanic, Latine, or of Spanish origin?

- ☐ Yes
- ☐ No
- ☐ Prefer not to say

What is your estimated household income?

- | | |
|--|--|
| <input type="checkbox"/> Less than \$15,000 | <input type="checkbox"/> \$100,000 - \$149,999 |
| <input type="checkbox"/> \$15,000 - \$24,999 | <input type="checkbox"/> \$150,000 and over |
| <input type="checkbox"/> \$25,000 - \$49,999 | <input type="checkbox"/> Prefer not to say |
| <input type="checkbox"/> \$50,000 - \$74,999 | |
| <input type="checkbox"/> \$75,000 - \$99,999 | |

What is the highest level of education you have completed?

- | | |
|---|--|
| <input type="checkbox"/> Less than 9th Grade | <input type="checkbox"/> Associate's degree |
| <input type="checkbox"/> 9th to 12th Grade, no diploma | <input type="checkbox"/> Bachelor's degree |
| <input type="checkbox"/> High school graduate or equivalent | <input type="checkbox"/> Graduate or professional degree |
| <input type="checkbox"/> Some college, no degree | <input type="checkbox"/> Prefer not to say |

Which of these categories best describes your employment status?

- | | |
|---|--|
| <input type="checkbox"/> Employed full time | <input type="checkbox"/> Student |
| <input type="checkbox"/> Employed part time | <input type="checkbox"/> Disabled |
| <input type="checkbox"/> Unemployed | <input type="checkbox"/> Prefer not to say |
| <input type="checkbox"/> Retired | |

What is your marital status?

- ☐ Single
- ☐ Married or in a domestic partnership
- ☐ Divorced or separated
- ☐ Widowed
- ☐ Prefer not to say

How many people live in your household? Use numbers only. If you live alone, put "1".**Do you have access to reliable internet in your home?**

- ☐ Yes
- ☐ No
- ☐ Prefer not to say

How did you access this survey?

- ☐ Hospital or public health website
- ☐ Hospital or public health social media page (e.g., Facebook)
- ☐ Hospital or public health employee directly
- ☐ Economic development website or social media
- ☐ Church bulletin
- ☐ Other website or social media page (please specify) _____
- ☐ Newsletter (please specify from where) _____
- ☐ Newspaper advertisement
- ☐ Word of mouth
- ☐ Direct email (please specify from where) _____
- ☐ Another way (please specify) _____

Please provide any additional comments you think we could use to improve the delivery of health care in your community. If you need more space, please attach additional paper.

If you would like to enter our prize drawing, please write your email address below!

Thanks for completing our survey!
We appreciate your time, and your responses will help inform health care decisions in your community.

If you entered your name to be included in our draw, we'll contact the winners BY EMAIL once the survey has closed. Good luck!

Appendix D. Survey Frequencies

Completing the survey means that you give your consent to participate in this Community Health Needs Assessment.					
		Frequency	Percent	Valid Percent	Cumulative Percent
Valid	I consent	97	100.0%	100.0%	100.0%

What is your zip code?					
		Frequency	Percent	Valid Percent	Cumulative Percent
Valid		16	16.5%	16.5%	16.5%
	58301	71	73.2%	73.2%	89.7%
	58324	1	1.0%	1.0%	90.7%
	58325	1	1.0%	1.0%	91.8%
	58327	1	1.0%	1.0%	92.8%
	58329	1	1.0%	1.0%	93.8%
	58346	1	1.0%	1.0%	94.8%
	58357	1	1.0%	1.0%	95.9%
	58368	2	2.1%	2.1%	97.9%
	58374	1	1.0%	1.0%	99.0%
	58377	1	1.0%	1.0%	100.0%
	Total	97	100.0%	100.0%	

What is the state in which you live?					
		Frequency	Percent	Valid Percent	Cumulative Percent
Valid	North Dakota	97	100.0%	100.0%	100.0%

What is the county where you live in North Dakota?					
		Frequency	Percent	Valid Percent	Cumulative Percent
Valid	Benson	3	3.1%	3.1%	3.1%
	Cavalier	2	2.1%	2.1%	5.2%
	Eddy	1	1.0%	1.0%	6.2%
	Pierce	3	3.1%	3.1%	9.3%
	Ramsey	86	88.7%	88.7%	97.9%
	Rolette	1	1.0%	1.0%	99.0%
	Towner	1	1.0%	1.0%	100.0%
	Total	97	100.0%	100.0%	

People in Your Community

		Strongly disagree	Somewhat disagree	Neither agree nor disagree	Somewhat agree	Strongly agree	Total
Please indicate your level of agreement for each of the following statements about the people in your community. - My community is culturally diverse	Count	8	12	9	38	29	96
	Row N %	8.3%	12.5%	9.4%	39.6%	30.2%	100.0%
Please indicate your level of agreement for each of the following statements about the people in your community. - People feel welcome and accepted in my community	Count	9	20	21	31	15	96
	Row N %	9.4%	20.8%	21.9%	32.3%	15.6%	100.0%
Please indicate your level of agreement for each of the following statements about the people in your community. - There is a sense of civic responsibility and engagement in my community	Count	10	22	18	33	12	95
	Row N %	10.5%	23.2%	18.9%	34.7%	12.6%	100.0%
Please indicate your level of agreement for each of the following statements about the people in your community. - The people in my community have a shared vision and community goals	Count	18	28	16	23	9	94
	Row N %	19.1%	29.8%	17.0%	24.5%	9.6%	100.0%

		Disagree	Neither agree nor disagree	Agree	Total
RECODE: People in your community - My community is culturally diverse	Count	20	9	67	96
	Row N %	20.8%	9.4%	69.8%	100.0%
RECODE: People in your community - People feel welcome and accepted in my community	Count	29	21	46	96
	Row N %	30.2%	21.9%	47.9%	100.0%
RECODE: People in your community - There is a sense of civic responsibility and engagement in my community	Count	32	18	45	95
	Row N %	33.7%	18.9%	47.4%	100.0%
RECODE: People in your community - The people in my community have a shared vision and community goals	Count	46	16	32	94
	Row N %	48.9%	17.0%	34.0%	100.0%

Services in Your Community

		Strongly disagree	Somewhat disagree	Neither agree nor disagree	Somewhat agree	Strongly agree	Total
Please indicate your level of agreement for each of the following statements about services in your community. - My community has adequate opportunities for recreation and leisure for all ages	Count	16	39	9	25	8	97
	Row N %	16.5%	40.2%	9.3%	25.8%	8.2%	100.0%
Please indicate your level of agreement for each of the following statements about services in your community. - My community has a thriving business district with access to needed goods and services	Count	18	33	19	20	7	97
	Row N %	18.6%	34.0%	19.6%	20.6%	7.2%	100.0%
Please indicate your level of agreement for each of the following statements about services in your community. - My community provides adequate public services like snow removal, garbage collection, or recycling	Count	7	10	13	30	35	95
	Row N %	7.4%	10.5%	13.7%	31.6%	36.8%	100.0%
Please indicate your level of agreement for each of the following statements about services in your community. - My community has adequate child care services	Count	25	28	17	9	7	86
	Row N %	29.1%	32.6%	19.8%	10.5%	8.1%	100.0%
Please indicate your level of agreement for each of the following statements about services in your community. - My community has adequate senior services	Count	15	28	16	24	7	90
	Row N %	16.7%	31.1%	17.8%	26.7%	7.8%	100.0%
Please indicate your level of agreement for each of the following statements about services in your community. - My community has a quality education system	Count	8	7	17	34	28	94
	Row N %	8.5%	7.4%	18.1%	36.2%	29.8%	100.0%
Please indicate your level of agreement for each of the following statements about services in your community. - My community has adequate public transportation services	Count	39	28	8	12	6	93
	Row N %	41.9%	30.1%	8.6%	12.9%	6.5%	100.0%
Please indicate your level of agreement for each of the following statements about services in your community. - My community has adequate employment opportunities that pay a livable wage	Count	13	37	11	28	7	96
	Row N %	13.5%	38.5%	11.5%	29.2%	7.3%	100.0%
Please indicate your level of agreement for each of the following statements about services in your community. - My community has adequate law enforcement	Count	7	16	13	39	21	96
	Row N %	7.3%	16.7%	13.5%	40.6%	21.9%	100.0%
Please indicate your level of agreement for each of the following statements about services in your community. - My community has enough affordable housing for everyone who needs it	Count	37	31	8	10	5	91
	Row N %	40.7%	34.1%	8.8%	11.0%	5.5%	100.0%
Please indicate your level of agreement for each of the following statements about services in your community. - My community has adequate access to healthy and affordable foods	Count	17	31	11	29	9	97
	Row N %	17.5%	32.0%	11.3%	29.9%	9.3%	100.0%

		Disagree	Neither agree nor disagree	Agree	Total
RECODE: Services in your community - My community has adequate opportunities for recreation and leisure for all ages	Count	55	9	33	97
	Row N %	56.7%	9.3%	34.0%	100.0%
RECODE: Services in your community - My community has a thriving business district with access to needed goods and services	Count	51	19	27	97
	Row N %	52.6%	19.6%	27.8%	100.0%
RECODE: Services in your community - My community provides adequate public services like snow removal, garbage collection, or recycling	Count	17	13	65	95
	Row N %	17.9%	13.7%	68.4%	100.0%
RECODE: Services in your community - My community has adequate child care services	Count	53	17	16	86
	Row N %	61.6%	19.8%	18.6%	100.0%
RECODE: Services in your community - My community has adequate senior services	Count	43	16	31	90
	Row N %	47.8%	17.8%	34.4%	100.0%
RECODE: Services in your community. - My community has a quality education system	Count	15	17	62	94
	Row N %	16.0%	18.1%	66.0%	100.0%
RECODE: Services in your community. - My community has adequate public transportation services	Count	67	8	18	93
	Row N %	72.0%	8.6%	19.4%	100.0%
RECODE: Services in your community. - My community has adequate employment opportunities that pay a livable wage	Count	50	11	35	96
	Row N %	52.1%	11.5%	36.5%	100.0%
RECODE: Services in your community. - My community has adequate law enforcement	Count	23	13	60	96
	Row N %	24.0%	13.5%	62.5%	100.0%
RECODE: Services in your community. - My community has enough affordable housing for everyone who needs it	Count	68	8	15	91
	Row N %	74.7%	8.8%	16.5%	100.0%
RECODE: Services in your community. - My community has adequate access to healthy and affordable foods	Count	48	11	38	97
	Row N %	49.5%	11.3%	39.2%	100.0%

Community Concerns

		Not concerned at all	Slightly concerned	Somewhat concerned	Very concerned	Total
How concerned are you about each of the following in your community? - Substance misuse (alcohol, prescription drugs, tobacco or vaping, illicit or street drugs)	Count	1	2	7	84	94
	Row N %	1.1%	2.1%	7.4%	89.4%	100.0%
How concerned are you about each of the following in your community? - Mental health (anxiety, stress, depression)	Count	4	3	14	74	95
	Row N %	4.2%	3.2%	14.7%	77.9%	100.0%
How concerned are you about each of the following in your community? - Suicide	Count	3	8	31	51	93
	Row N %	3.2%	8.6%	33.3%	54.8%	100.0%
How concerned are you about each of the following in your community? - Access to healthy foods	Count	14	20	36	27	97
	Row N %	14.4%	20.6%	37.1%	27.8%	100.0%
How concerned are you about each of the following in your community? - Food insecurity or hunger	Count	9	14	41	31	95
	Row N %	9.5%	14.7%	43.2%	32.6%	100.0%
How concerned are you about each of the following in your community? - Poverty in my community	Count	2	13	22	56	93
	Row N %	2.2%	14.0%	23.7%	60.2%	100.0%
How concerned are you about each of the following in your community? - Sexually transmitted diseases or infections	Count	8	13	31	26	78
	Row N %	10.3%	16.7%	39.7%	33.3%	100.0%
How concerned are you about each of the following in your community? - Crime in my community	Count	3	11	33	49	96
	Row N %	3.1%	11.5%	34.4%	51.0%	100.0%
How concerned are you about each of the following in your community? - Availability of long-term care or assisted living facilities	Count	10	21	34	29	94
	Row N %	10.6%	22.3%	36.2%	30.9%	100.0%
How concerned are you about each of the following in your community? - Availability of elder care services to support independent living, or aging in place	Count	7	16	27	36	86
	Row N %	8.1%	18.6%	31.4%	41.9%	100.0%
How concerned are you about each of the following in your community? - Obesity or overweightness	Count	4	13	25	50	92
	Row N %	4.3%	14.1%	27.2%	54.3%	100.0%

Violence Concerns in Community

		Not concerned at all	Slightly concerned	Somewhat concerned	Very concerned	Total
How concerned are you about the following types of violence in your community? - Cyber bullying	Count	5	12	22	51	90
	Row N %	5.6%	13.3%	24.4%	56.7%	100.0%
How concerned are you about the following types of violence in your community? - Child abuse or neglect	Count	2	5	29	58	94
	Row N %	2.1%	5.3%	30.9%	61.7%	100.0%
How concerned are you about the following types of violence in your community? - Intimate partner violence	Count	11	9	37	34	91
	Row N %	12.1%	9.9%	40.7%	37.4%	100.0%
How concerned are you about the following types of violence in your community? - Emotional abuse (including intimidation or isolation)	Count	8	13	27	44	92
	Row N %	8.7%	14.1%	29.3%	47.8%	100.0%
How concerned are you about the following types of violence in your community? - Sexual abuse or assault	Count	5	10	34	43	92
	Row N %	5.4%	10.9%	37.0%	46.7%	100.0%
How concerned are you about the following types of violence in your community? - Stalking	Count	14	21	31	20	86
	Row N %	16.3%	24.4%	36.0%	23.3%	100.0%
How concerned are you about the following types of violence in your community? - Verbal threats or harassment	Count	8	13	33	40	94
	Row N %	8.5%	13.8%	35.1%	42.6%	100.0%
How concerned are you about the following types of violence in your community? - Gun violence	Count	24	21	28	17	90
	Row N %	26.7%	23.3%	31.1%	18.9%	100.0%

Medical Services in Your Community

		Strongly disagree	Somewhat disagree	Neither agree nor disagree	Somewhat agree	Strongly agree	Total
Please indicate your level of agreement with the following issues related to medical services in your community. - It is easy to get an appointment for health care services in my community	Count	9	16	15	42	13	95
	Row N %	9.5%	16.8%	15.8%	44.2%	13.7%	100.0%
Please indicate your level of agreement with the following issues related to medical services in your community. - My community has adequate primary care providers and nurses	Count	14	23	11	34	15	97
	Row N %	14.4%	23.7%	11.3%	35.1%	15.5%	100.0%
Please indicate your level of agreement with the following issues related to medical services in your community. - My community has adequate health care services to meet my health care needs	Count	19	24	13	30	11	97
	Row N %	19.6%	24.7%	13.4%	30.9%	11.3%	100.0%
Please indicate your level of agreement with the following issues related to medical services in	Count	7	15	13	33	26	94
	Row N %	7.4%	16.0%	13.8%	35.1%	27.7%	100.0%

		Strongly disagree	Somewhat disagree	Neither agree nor disagree	Somewhat agree	Strongly agree	Total
your community. - My community has adequate dental care providers							
Please indicate your level of agreement with the following issues related to medical services in your community. - My community has adequate vision care providers	Count	16	19	11	29	17	92
	Row N %	17.4%	20.7%	12.0%	31.5%	18.5%	100.0%
Please indicate your level of agreement with the following issues related to medical services in your community. - My community has adequate mental health services	Count	37	28	10	18	2	95
	Row N %	38.9%	29.5%	10.5%	18.9%	2.1%	100.0%
Please indicate your level of agreement with the following issues related to medical services in your community. - My community has adequate access to emergency response services such as ambulance or fire fighters	Count	9	11	9	41	27	97
	Row N %	9.3%	11.3%	9.3%	42.3%	27.8%	100.0%
Please indicate your level of agreement with the following issues related to medical services in your community. - I can easily navigate the health care system in my community	Count	9	15	16	36	21	97
	Row N %	9.3%	15.5%	16.5%	37.1%	21.6%	100.0%
Please indicate your level of agreement with the following issues related to medical services in your community. - I receive quality health care in my community	Count	10	15	19	33	20	97
	Row N %	10.3%	15.5%	19.6%	34.0%	20.6%	100.0%
Please indicate your level of agreement with the following issues related to medical services in your community. - In my community, care is well coordinated across providers and services	Count	15	32	15	22	11	95
	Row N %	15.8%	33.7%	15.8%	23.2%	11.6%	100.0%

		Disagree	Neither agree nor disagree	Agree	Total
RECODE: Medical services in your community. - It is easy to get an appointment for health care services in my community	Count	25	15	55	95
	Row N %	26.3%	15.8%	57.9%	100.0%
RECODE: Medical services in your community. - My community has adequate primary care providers and nurses	Count	37	11	49	97
	Row N %	38.1%	11.3%	50.5%	100.0%
RECODE: Medical services in your community. - My community has adequate health care services to meet my health care needs	Count	43	13	41	97
	Row N %	44.3%	13.4%	42.3%	100.0%
RECODE: Medical services in your community. - My community has adequate dental care providers	Count	22	13	59	94
	Row N %	23.4%	13.8%	62.8%	100.0%
RECODE: Medical services in your community. - My community has adequate vision care providers	Count	35	11	46	92
	Row N %	38.0%	12.0%	50.0%	100.0%

		Disagree	Neither agree nor disagree	Agree	Total
RECODE: Medical services in your community. - My community has adequate mental health services	Count	65	10	20	95
	Row N %	68.4%	10.5%	21.1%	100.0%
RECODE: Medical services in your community. - My community has adequate access to emergency response services such as ambulance or fire fighters	Count	20	9	68	97
	Row N %	20.6%	9.3%	70.1%	100.0%
RECODE: Medical services in your community. - I can easily navigate the health care system in my community	Count	24	16	57	97
	Row N %	24.7%	16.5%	58.8%	100.0%
RECODE: Medical services in your community. - I receive quality health care in my community	Count	25	19	53	97
	Row N %	25.8%	19.6%	54.6%	100.0%
RECODE: Medical services in your community. - In my community, care is well coordinated across providers and services	Count	47	15	33	95
	Row N %	49.5%	15.8%	34.7%	100.0%

Last CHNA Needs

		Much worse	Somewhat worse	About the same	Somewhat better	Much better	Total
Three years ago, the last Community Health Needs Assessment identified the following issues as community health needs. To what degree do you believe these issues have changed? - Having enough child daycare services	Count	4	16	41	14	6	81
	Row N %	4.9%	19.8%	50.6%	17.3%	7.4%	100.0%
Three years ago, the last Community Health Needs Assessment identified the following issues as community health needs. To what degree do you believe these issues have changed? - Suicide	Count	8	17	46	6	2	79
	Row N %	10.1%	21.5%	58.2%	7.6%	2.5%	100.0%
Three years ago, the last Community Health Needs Assessment identified the following issues as community health needs. To what degree do you believe these issues have changed? - Availability of mental health and substance use disorder treatment services	Count	21	19	32	9	4	85
	Row N %	24.7%	22.4%	37.6%	10.6%	4.7%	100.0%
Three years ago, the last Community Health Needs Assessment identified the following issues as community health needs. To what degree do you believe these issues have changed? - Drug use and abuse (including prescription drugs)	Count	38	28	17	2	2	87
	Row N %	43.7%	32.2%	19.5%	2.3%	2.3%	100.0%

		Worse	The same	Better	Total
RECODE: Previous issues – Having enough daycare services	Count	20	41	20	81
	Row N %	24.7%	50.6%	24.7%	100.0%
RECODE: Previous issues – Suicide	Count	25	46	8	79
	Row N %	31.6%	58.2%	10.1%	100.0%
	Count	40	32	13	85

RECODE: Previous issues – Availability of mental health and substance use disorder treatment services	Row N %	47.1%	37.6%	15.3%	100.0%
RECODE: Previous issues - Drug use and abuse (including prescription drugs)	Count	66	17	4	87
	Row N %	75.9%	19.5%	4.6%	100.0%

Preventative Health Care Measures

Multiple Response						
	Valid		Missing		Total	
	N	Percent	N	Percent	N	Percent
MRQ5.1 ^a	95	97.9%	2	2.1%	97	100.0%

MRQ5.1 Frequencies				
		Responses		Percent of Cases
		N	Percent	
MRQ5.1 ^a	Which of the following preventative health care measures have you received in the last year? Vaccinations	73	17.5%	76.8%
	Which of the following preventative health care measures have you received in the last year? Annual physical exam	70	16.8%	73.7%
	Which of the following preventative health care measures have you received in the last year? Mammogram	42	10.1%	44.2%
	Which of the following preventative health care measures have you received in the last year? Colonoscopy	13	3.1%	13.7%
	Which of the following preventative health care measures have you received in the last year? Blood pressure or cholesterol screening	45	10.8%	47.4%
	Which of the following preventative health care measures have you received in the last year? Counseling for tobacco use, alcohol dependency, weight loss, behavioral health	8	1.9%	8.4%
	Which of the following preventative health care measures have you received in the last year? Depression screening	26	6.2%	27.4%
	Which of the following preventative health care measures have you received in the last year? STD/STI Screening	8	1.9%	8.4%
	Which of the following preventative health care measures have you received in the last year? Vision exam or annual checkup	62	14.9%	65.3%
	Which of the following preventative health care measures have you received in the last year? Dental exam or annual checkup	70	16.8%	73.7%
Total		417	100.0%	438.9%
a. Dichotomy group tabulated at value 1.				

Barriers to Health Services

		Not at all a barrier	Somewhat of a barrier	Extreme barrier	Total
To what degree are each of the following issues a barrier to your ability to access health care services? - Transportation to health care service locations	Count	57	18	12	87
	Row N %	65.5%	20.7%	13.8%	100.0%
To what degree are each of the following issues a barrier to your ability to access health care services? - Distance to access care	Count	40	34	19	93
	Row N %	43.0%	36.6%	20.4%	100.0%
To what degree are each of the following issues a barrier to your ability to access health care services? - Concerns about confidentiality	Count	61	22	12	95
	Row N %	64.2%	23.2%	12.6%	100.0%
To what degree are each of the following issues a barrier to your ability to access health care services? - Availability of local services to meet my health care needs	Count	27	42	23	92
	Row N %	29.3%	45.7%	25.0%	100.0%
To what degree are each of the following issues a barrier to your ability to access health care services? - Communication or language barriers	Count	74	11	5	90
	Row N %	82.2%	12.2%	5.6%	100.0%
To what degree are each of the following issues a barrier to your ability to access health care services? - Disability accommodations	Count	52	14	10	76
	Row N %	68.4%	18.4%	13.2%	100.0%
To what degree are each of the following issues a barrier to your ability to access health care services? - Scheduling health care services within clinic hours	Count	48	35	11	94
	Row N %	51.1%	37.2%	11.7%	100.0%
To what degree are each of the following issues a barrier to your ability to access health care services? - The length of time to see a provider, from making an appointment to attending the appointment	Count	38	42	13	93
	Row N %	40.9%	45.2%	14.0%	100.0%
To what degree are each of the following issues a barrier to your ability to access health care services? - The price of prescription drugs, even with insurance	Count	38	29	26	93
	Row N %	40.9%	31.2%	28.0%	100.0%
To what degree are each of the following issues a barrier to your ability to access health care services? - The price of health care services (such as co-payments or deductibles), even with insurance	Count	19	46	29	94
	Row N %	20.2%	48.9%	30.9%	100.0%

Do you currently have a primary care doctor?					
		Frequency	Percent	Valid Percent	Cumulative Percent
Valid	Yes	85	87.6%	88.5%	88.5%
	No	11	11.3%	11.5%	100.0%
	Total	96	99.0%	100.0%	
Missing	Prefer not to respond	1	1.0%		
Total		97	100.0		

Multiple Response						
	Cases					
	Valid		Missing		Total	
	N	Percent	N	Percent	N	Percent
MRQ5.5 ^a	95	97.9%	2	2.1%	97	100.0%
a. Dichotomy group tabulated at value 1.						

MRQ5.5 Frequencies				
		Responses		Percent of Cases
		N	Percent	
MRQ5.5 ^a	Where do you find out about health information? Other health care professionals	49	15.3%	51.6%
	Where do you find out about health information? Primary care provider	72	22.4%	75.8%
	Where do you find out about health information? Public health professionals	30	9.3%	31.6%
	Where do you find out about health information? Internet sources	61	19.0%	64.2%
	Where do you find out about health information? Word of mouth (including family and friends)	42	13.1%	44.2%
	Where do you find out about health information? Advertising, such as TV commercials	13	4.0%	13.7%
	Where do you find out about health information? My employer	31	9.7%	32.6%
	Where do you find out about health information? Newspaper	7	2.2%	7.4%
	Where do you find out about health information? Radio	12	3.7%	12.6%
	Where do you find out about health information? Other source	4	1.2%	4.2%
Total		321	100.0%	337.9%
a. Dichotomy group tabulated at value 1.				

Multiple Response						
Case Summary						
	Cases					
	Valid		Missing		Total	
	N	Percent	N	Percent	N	Percent
MRQ5.6 ^a	96	99.0%	1	1.0%	97	100.0%
a. Dichotomy group tabulated at value 1.						

MRQ5.6 Frequencies				
		Responses		Percent of Cases
		N	Percent	
MRQ5.6 ^a	What type of health insurance coverage do you have? (Select all that apply) - Selected Choice Insurance through employer (either your own or a family member's)	76	69.1%	79.2%
	What type of health insurance coverage do you have? (Select all that apply) - Selected Choice Private health insurance (coverage purchased by you)	11	10.0%	11.5%
	What type of health insurance coverage do you have? (Select all that apply) - Selected Choice Government program (Medicare, Medicaid, etc.)	12	10.9%	12.5%
	What type of health insurance coverage do you have? (Select all that apply) - Selected Choice Indian Health Service (IHS)	2	1.8%	2.1%
	What type of health insurance coverage do you have? (Select all that apply) - Selected Choice Military (Tricare, Champus, VA)	3	2.7%	3.1%
	What type of health insurance coverage do you have? (Select all that apply) - Selected Choice Other (please specify)	2	1.8%	2.1%
	What type of health insurance coverage do you have? (Select all that apply) - Selected Choice No health insurance	2	1.8%	2.1%
	What type of health insurance coverage do you have? (Select all that apply) - Selected Choice Prefer not to say	2	1.8%	2.1%
Total		110	100.0%	114.6%
a. Dichotomy group tabulated at value 1.				

MRQ5.7 Frequencies				
		Responses		Percent of Cases
		N	Percent	
MRQ5.7 ^a	Why do you not have health insurance? Select all that apply - Selected Choice Too expensive	2	66.7%	100.0%
	Why do you not have health insurance? Select all that apply - Selected Choice I am healthy and do not need insurance	1	33.3%	50.0%
Total		3	100.0%	150.0%
a. Dichotomy group tabulated at value 1.				

SOCIAL HARDSHIP AND DISCRIMINATION

Did you move to your community in the past year?					
		Frequency	Percent	Valid Percent	Cumulative Percent
Valid	Yes	5	5.2	5.3	5.3
	No	90	92.8	94.7	100.0
	Total	95	97.9	100.0	
Missing	Prefer not to respond	2	2.1		
Total		97	100.0		

		Not difficult at all	Slightly difficult	Somewhat difficult	Very difficult	Total
How difficult was it to do the following things? - Enroll children in school	Count	0	0	0	1	1
	Row N %	0.0%	0.0%	0.0%	100.0%	100.0%
How difficult was it to do the following things? - Find housing	Count	0	0	2	3	5
	Row N %	0.0%	0.0%	40.0%	60.0%	100.0%
How difficult was it to do the following things? - Find health care	Count	3	1	0	1	5
	Row N %	60.0%	20.0%	0.0%	20.0%	100.0%
How difficult was it to do the following things? - Find a job	Count	2	1	0	2	5
	Row N %	40.0%	20.0%	0.0%	40.0%	100.0%
How difficult was it to do the following things? - Find child care	Count	0	1	0	1	2
	Row N %	0.0%	50.0%	0.0%	50.0%	100.0%

Have you experienced discrimination in the past 12 months?					
		Frequency	Percent	Valid Percent	Cumulative Percent
Valid	Yes	15	15.5	15.6	15.6
	No	81	83.5	84.4	100.0
	Total	96	99.0	100.0	
Missing	Prefer not to respond	1	1.0		
Total		97	100.0		

Multiple Response						
Case Summary						
	Cases					
	Valid		Missing		Total	
	N	Percent	N	Percent	N	Percent
MRQ6.4 ^a	15	15.5%	82	84.5%	97	100.0%
a. Dichotomy group tabulated at value 1.						

MRQ6.4 Frequencies				
		Responses		Percent of Cases
		N	Percent	
MRQ6.4 ^a	In what areas have you experienced discrimination? Select all that apply. - Selected Choice Race	11	29.7%	73.3%
	In what areas have you experienced discrimination? Select all that apply. - Selected Choice Ethnicity	6	16.2%	40.0%
	In what areas have you experienced discrimination? Select all that apply. - Selected Choice Sex	4	10.8%	26.7%
	In what areas have you experienced discrimination? Select all that apply. - Selected Choice Age	5	13.5%	33.3%
	In what areas have you experienced discrimination? Select all that apply. - Selected Choice Weight	8	21.6%	53.3%
	In what areas have you experienced discrimination? Select all that apply. - Selected Choice Disability	1	2.7%	6.7%
	In what areas have you experienced discrimination? Select all that apply. - Selected Choice Religion	1	2.7%	6.7%
	In what areas have you experienced discrimination? Select all that apply. - Selected Choice Prefer not to respond	1	2.7%	6.7%
Total		37	100.0%	246.7%
a. Dichotomy group tabulated at value 1.				

Multiple Response						
Case Summary						
	Cases					
	Valid		Missing		Total	
	N	Percent	N	Percent	N	Percent
MRQ6.5 ^a	15	15.5%	82	84.5%	97	100.0%
a. Dichotomy group tabulated at value 1.						

MRQ6.5 Frequencies				
		Responses		Percent of Cases
		N	Percent	
MRQ6.5	In which of the following situations did you experience discrimination? Select all that apply. - Selected Choice Applying for a job	1	3.3%	6.7%
	In which of the following situations did you experience discrimination? Select all that apply. - Selected Choice At a job, work or my place of employment	5	16.7%	33.3%
	In which of the following situations did you experience discrimination? Select all that apply. - Selected Choice Receiving medical care	5	16.7%	33.3%
	In which of the following situations did you experience discrimination? Select all that apply. - Selected Choice Looking for housing	2	6.7%	13.3%
	In which of the following situations did you experience discrimination? Select all that apply. - Selected Choice Applying for a credit card, mortgage, or bank loan	2	6.7%	13.3%
	In which of the following situations did you experience discrimination? Select all that apply. - Selected Choice Shopping at a store or eating at a restaurant	6	20.0%	40.0%
	In which of the following situations did you experience discrimination? Select all that apply. - Selected Choice Applying for social services or public assistance	4	13.3%	26.7%
	In which of the following situations did you experience discrimination? Select all that apply. - Selected Choice Interacting with the police	1	3.3%	6.7%
	In which of the following situations did you experience discrimination? Select all that apply. - Selected Choice Another area (please specify)	1	3.3%	6.7%
	In which of the following situations did you experience discrimination? Select all that apply. - Selected Choice Prefer not to respond	3	10.0%	20.0%
Total		30	100.0%	200.0%
a. Dichotomy group tabulated at value 1.				

How difficult is it for you to pay for heating, housing, or medical care?					
		Frequency	Percent	Valid Percent	Cumulative Percent
Valid	Not difficult at all	37	38.1%	40.2%	40.2%
	Slightly difficult	25	25.8%	27.2%	67.4%
	Somewhat difficult	16	16.5%	17.4%	84.8%
	Very difficult	14	14.4%	15.2%	100.0%
	Total	92	94.8%	100.0%	
Missing	Prefer not to respond	5	5.2%		
Total		97	100.0%		

In the last month, have you had to sleep outside, in a shelter, in your car, at a family member or friend's house, or in a place not meant for sleeping?					
		Frequency	Percent	Valid Percent	Cumulative Percent
Valid	Yes	3	3.1%	3.2%	3.2%
	No	91	93.8%	96.8%	100.0%
	Total	94	96.9%	100.0%	
Missing	Prefer not to respond	2	2.1%		
	System	1	1.0%		
	Total	3	3.1%		
Total		97	100.0%		

Statistics		
What is your age? - Select your age on the slider		
N	Valid	91
	Missing	6
Mean		46.2527
Median		45.0000

RECODE: Age					
		Frequency	Percent	Valid Percent	Cumulative Percent
Valid	18 to 34 years	19	19.6%	20.9%	20.9%
	35 to 44 years	26	26.8%	28.6%	49.5%
	45 to 64 years	36	37.1%	39.6%	89.0%
	65 to 84 years	10	10.3%	11.0%	100.0%
	Total	91	93.8%	100.0%	
Missing	System	6	6.2%		
Total		97	100.0%		

What is your gender? - Selected Choice					
		Frequency	Percent	Valid Percent	Cumulative Percent
Valid	Male	16	16.5%	16.8%	16.8%
	Female	79	81.4%	83.2%	100.0%
	Total	95	97.9%	100.0%	
Missing	Prefer not to say	1	1.0%		
	System	1	1.0%		
	Total	2	2.1%		
Total		97	100.0%		

Multiple Response						
Case Summary						
	Cases					
	Valid		Missing		Total	
	N	Percent	N	Percent	N	Percent
MRQ7.3 ^a	96	99.0%	1	1.0%	97	100.0%
a. Dichotomy group tabulated at value 1.						

MRQ7.3 Frequencies				
		Responses		Percent of Cases
		N	Percent	
MRQ7.3 ^a	Which of these groups best represents your race? Select all that apply. - Selected Choice White	85	85.0%	88.5%
	Which of these groups best represents your race? Select all that apply. - Selected Choice American Indian or Alaska Native	7	7.0%	7.3%
	Which of these groups best represents your race? Select all that apply. - Selected Choice Asian	3	3.0%	3.1%
	Which of these groups best represents your race? Select all that apply. - Selected Choice Native Hawaiian or Pacific Islander	1	1.0%	1.0%
	Which of these groups best represents your race? Select all that apply. - Selected Choice Other (please describe)	1	1.0%	1.0%
	Which of these groups best represents your race? Select all that apply. - Selected Choice Prefer not to say	3	3.0%	3.1%
Total		100	100.0%	104.2%
a. Dichotomy group tabulated at value 1.				

Do you identify as Hispanic, Latine, or of Spanish origin?					
		Frequency	Percent	Valid Percent	Cumulative Percent
Valid	No	91	93.8%	100.0%	100.0%
Missing	Prefer not to say	2	2.1%		
	System	4	4.1%		
	Total	6	6.25		
Total		97	100.0%		
What is your estimated annual household income?					
		Frequency	Percent	Valid Percent	Cumulative Percent
Valid	Less than \$15,000	2	2.1%	2.5%	2.5%
	\$15,000 - \$24,999	4	4.1%	5.1%	7.6%
	\$25,000 - \$49,999	12	12.4%	15.2%	22.8%
	\$50,000 - \$74,999	18	18.6%	22.8%	45.6%
	\$75,000 - \$99,999	17	17.5%	21.5%	67.1%
	\$100,000 - \$149,999	18	18.6%	22.8%	89.9%
	\$150,000 and over	8	8.2%	10.1%	100.0%
	Total	79	81.4%	100.0%	
Missing	Prefer not to say	13	13.4%		
	System	5	5.25		
	Total	18	18.6%		
Total		97	100.0%		

What is the highest level of education you have completed?					
		Frequency	Percent	Valid Percent	Cumulative Percent
Valid	9 th to 12 th Grade, no diploma	1	1.0%	1.1%	1.1%
	High school graduate or equivalency	9	9.3%	9.9%	11.0%
	Some college, no degree	14	14.4%	15.4%	26.4%
	Associate's degree	23	23.7%	25.3%	51.6%
	Bachelor's degree	33	34.0%	36.3%	87.9%
	Graduate or professional degree	11	11.3%	12.1%	100.0%
	Total	91	93.8%	100.0%	
Missing	Prefer not to say	1	1.0%		
	System	5	5.2%		
Total		97	100.0%		

Which of these categories best describes your employment status?					
		Frequency	Percent	Valid Percent	Cumulative Percent
Valid	Employed full time	73	75.3%	83.9%	83.9%
	Employed part time	5	5.2%	5.7%	89.7%
	Retired	7	7.2%	8.0%	97.7%
	Student	1	1.0%	1.1%	98.9%
	Disabled	1	1.0%	1.1%	100.0%
	Total	87	89.7%	100.0%	
Missing	Prefer not to say	3	3.1%		
	System	7	7.2%		
	Total	10	10.3%		
Total		97	100.0%		

What is your marital status?					
		Frequency	Percent	Valid Percent	Cumulative Percent
Valid	Single	17	17.5%	18.3%	18.3%
	Married or in a domestic partnership	66	68.0%	71.0%	89.2%
	Divorced or separated	8	8.2%	8.6%	97.8%
	Widowed	2	2.1%	2.2%	100.0%
	Total	93	95.9%	100.0%	
Missing	Prefer not to say	2	2.1%		
	System	2	2.1%		
	Total	4	4.1%		
Total		97	100.0%		

Statistics		
How many people live in your household? Use numbers only. If you live alone, put "1".		
N	Valid	95
	Missing	2
Mean		2.8842
Median		2.0000

RECODE: How many people live in your household?					
		Frequency	Percent	Valid Percent	Cumulative Percent
Valid	1 person	9	9.3%	9.5%	9.5%
	2 to 4 people	72	74.2%	75.8%	85.3%
	5 or more people	14	14.4%	14.7%	100.0%
	Total	95	97.9%	100.0%	
Missing	System	2	2.1%		
Total		97	100.0%		
Do you have access to reliable internet in your home?					
		Frequency	Percent	Valid Percent	Cumulative Percent
Valid	Yes	89	91.8%	95.7%	95.7%
	No	4	4.1%	4.3%	100.0%
	Total	93	95.9%	100.0%	
Missing	Prefer not to respond	1	1.0%		
	System	3	3.1%		
	Total	4	4.1%		
Total		97	100.0%		

How did you get access to this survey, or survey link? – Selected Choice					
		Frequency	Percent	Valid Percent	Cumulative Percent
Valid	Hospital or public health website	16	16.5%	16.8%	16.8%
	Hospital or public health social media page (e.g. Facebook)	19	19.6%	20.0%	36.8%
	Hospital or public health employee directly	22	22.7%	23.2%	60.0%
	Economic development website or social media page	2	2.1%	2.1%	62.1%
	Other website or social media page (please specify)	12	12.4%	12.6%	74.7%
	Word of mouth	5	5.2%	5.3%	80.0%
	Direct email (please specify from where)	15	15.5%	15.8%	95.8%
	Another way (please specify)	4	4.1%	4.2%	100.0%
	Total	95	97.9%	100.0%	
Missing	System	2	2.1%		
Total		97	100.0%		

Distribution Channel		Frequency	Percent	Valid Percent	Cumulative Percent
Valid	anonymous	72	74.2%	74.2%	74.2%
	qr	25	25.8%	25.8%	100.0%
	Total	97	100.0%		