

# Community Health Needs Assessment

CHI St. Alexius Health – Turtle Lake, ND  
Approved April 2025



## Acknowledgements

The CHNA process is a significant undertaking resulting from the vision and leadership of numerous individuals and governing bodies. It is important to acknowledge those who have dedicated time and energy to ensure that thoughtful planning and long-range strategic vision serve as the basis for policy and decision-making regarding community health needs.

Researchers with the Center for Social Research at North Dakota State University gratefully acknowledge the support of the individuals and organizations who assisted in the preparation of the Community Health Needs Assessment for CHI St. Alexius Health in Turtle Lake.

Financial support was provided by CHI Health, a member of CommonSpirit Health.

North Dakota State University does not discriminate on the basis of age, color, disability, gender expression/identity, genetic information, marital status, national origin, public assistance status, race, religion, sex, sexual orientation, or status as a U.S. veteran. Please address your inquiries regarding this publication to: The NDSU Center for Social Research, P.O. Box 6050, Dept. 2574, Fargo, ND 58108-6050, Phone: 701-231-8621, Email: [Nancy.Hodur@ndsu.edu](mailto:Nancy.Hodur@ndsu.edu)

NDSU is an equal opportunity institution.

Copyright © 2025 by Hodur, Schroeder, and Slone. All rights reserved. Readers may make verbatim copies of this document for non-commercial purposes by any means, provided this copyright notice appears on all such copies.

## Table of Contents

Executive Summary .....	4
Purpose .....	4
CommonSpirit Health Commitment and Mission Statement.....	4
CHNA Collaborators.....	4
Community Definition .....	4
Assessment Process and Methods.....	4
Prioritized Significant Health Needs.....	5
Resources Potentially Available.....	6
Report Adoption, Availability, and Comments.....	6
Community Definition .....	6
Hospital Description .....	7
Assessment Process and Methods.....	8
Secondary data: community profiles .....	8
Primary data: health needs survey and community discussion .....	8
Community Input .....	8
Assessment Data and Findings .....	9
Community Profile.....	9
Community Demographics.....	9
Community Health Factors and Outcomes .....	12
National Risk Index .....	14
Community Health Survey Analysis.....	15
Respondent Demographics.....	15
Findings.....	15
Significant Community Health Needs .....	21
Resources Potentially Available to Address Needs .....	22
Impact of Actions Taken Since Preceding CHNA .....	23
2023-2025 Community Health Implementation Strategy .....	23
Health Need: Availability of resources to help the elderly stay in their homes .....	23
Health Need: Not having enough places for exercise and wellness activities .....	25
Health Need: Having enough child daycare services .....	26
Health Need: Health-Related Social Needs (HRSN) with the goal of improving patient health .....	27
References.....	27
Appendices.....	28
Appendix A: CDC/ATSDR Social Vulnerability Index 2022 for McLean, Oliver, and Sheridan Counties, ND .....	28
Appendix B: Secondary Data Tables for Oliver County.....	31
Appendix C: Secondary Data Tables for Sheridan County.....	35
Appendix D: Survey Instrument .....	39
Appendix E: Survey Frequencies.....	51

## Executive Summary

### Purpose

The purpose of this community health needs assessment (CHNA) is to identify and prioritize significant health needs of the community served by CHI St. Alexius Health Turtle Lake. The priorities identified in this report help to guide the hospital's community health improvement programs and community benefit activities, as well as its collaborative efforts with other organizations that share a mission to improve health. This CHNA report meets requirements of the Patient Protection and Affordable Care Act that not-for-profit hospitals conduct a community health needs assessment at least once every three years.

### CommonSpirit Health Commitment and Mission Statement

The hospital's commitment to engaging with the community, assessing priority needs, and helping to address them with community health program activities is in keeping with its mission. As CommonSpirit Health, we make the healing presence of God known in our world by improving the health of the people we serve, especially those who are vulnerable, while we advance social justice for all.

### CHNA Collaborators

CHI St. Alexius Health Turtle Lake contracted with the North Dakota State University Center for Social Research to conduct the CHNA. The Center for Social Research developed community profiles and developed and conducted a community feedback survey that provided the foundation for this needs assessment. CHI St. Alexius Health Turtle Lake collaborated with CHI St. Alexius Health Garrison on this CHNA.

### Community Definition

CHI St. Alexius Health Turtle Lake is located in Turtle Lake, North Dakota. The hospital primarily serves McLean County where Turtle Lake is located. Additionally, CHI St. Alexius Health Turtle Lake serves Sheridan and Oliver counties. In addition to CHI St. Alexius Health Turtle Lake, McLean County is home to CHI St. Alexius Health Garrison located in Garrison, ND.

McLean County is designated as a Health Professional Shortage Area (HPSA) and as a Medically Underserved Area (MUA) by the United States Health Resources & Services Administration. McLean County is a rural county located in west central North Dakota and has an estimated population of 9,781.

### Assessment Process and Methods

Community health needs were assessed using secondary data from national and state sources and primary data gathered from community members during a two-month survey period. CHI St. Alexius Health Turtle Lake representatives solicited additional input from local community organizations to review, validate, and prioritize identified needs at a community meeting held January 8, 2025.

Multiple data sources with various indicators that inform social considerations were compiled and analyzed. Data sources include but are not limited to County Health Rankings, the American Community Survey (ACS), the Bureau of Economic Analysis (BEA), and the Centers for Disease Control and Surveillance (CDC). All community level data were compared to state and national data for context. Community member input was solicited via an online survey and a community input meeting.

The survey was administered using a QR code for public distribution using various online and print media, and a survey link that was distributed by hospital personnel. At least one public health organization was invited to participate in distribution of the community survey. Upon conclusion of the survey fielding period, data were compiled and analyzed. Survey data were analyzed using widely accepted standard descriptive statistics, such as measures of mean, median, and frequencies. Priority needs were identified as those issues with the greatest level of consensus among survey respondents.

CHI St. Alexius Health Turtle Lake solicited feedback on survey findings at a community input meeting on January 8, 2025. A presentation that summarized the community profile and highlighted key survey findings was used to report and validate priority needs identified in the survey results and guide discussion of needs and priorities for community health improvement planning.

### Prioritized Significant Health Needs

Based on an analysis of survey data, the following were identified as issues with the greatest degree of consensus among survey respondents. Secondary data are provided in support of these findings.

- **Community services.** Nearly 3 in 4 respondents (73 percent) disagreed that their community has adequate child care services. Child care services was identified as a priority need in the previous CHNA conducted in 2022 and 58 percent of survey respondents indicated that the availability of child care services has worsened since then. More than 4 in 5 respondents (83 percent) disagreed that their community has adequate vision care providers, 63 percent disagreed that their community has adequate public transportation services, and 51 percent disagreed their community has adequate mental health services. A slightly lower percentage (48 percent) disagreed that their community has adequate dental care providers. Respondents' perception of the availability of health care providers is consistent with secondary data on the ratio of residents per provider. The ratio of population to primary care physicians, mental health care providers, and dental providers was substantially higher in McLean County than in North Dakota and the nation overall.
- **Affordability of health care services and prescriptions.** The price of prescription drugs, even with insurance, was considered at least somewhat of a barrier to 51 percent of respondents; 15 percent considered the price of prescription drugs an extreme barrier. A similar percentage (50 percent) considered the price of health care services, even with insurance, to be at least somewhat of a barrier to accessing care.
- **Psychological abuse and crime.** Respondents expressed moderate levels of concern related to child abuse and cyber bullying in their community. Forty-five percent of respondents were at least somewhat concerned about child abuse, 22 percent were very concerned. Fifty-seven percent of respondents were at least somewhat concerned about cyber bullying.
- **Mental health (anxiety, stress, depression).** The ratio of population to mental health providers was substantially higher in McLean County (2,460:1) than in North Dakota (420:1). Consistent with the lack of mental health care providers in their community, 69 percent of respondents were at least somewhat concerned about mental health in their community.
- **Substance misuse.** Most respondents were at least slightly concerned about substance misuse in their community (alcohol, prescription drugs, tobacco or vaping, illicit or street drugs) (93 percent); 43 percent were very concerned, 31 percent were somewhat concerned, and 19 percent were slightly concerned. Respondents had the highest level of agreement regarding substance misuse in their community among all various concerns included in the questionnaire.

During the January 8, 2025 community input meeting, attendees discussed survey findings, whether survey findings aligned with their perceptions of their community's needs, and the demographics of survey respondents. Meeting attendees indicated that the issues identified in the presentation accurately reflected issues of concern in their community. In discussing the lack of child care, attendees indicated that while cost was not a concern, there were issues with staffing, retention, and compliance with regulations. As well, the high cost of prescription drugs was discussed, as was wellness in the community. Attendees were positive about changes in fitness access, but less positive about things like cooking skills and healthy meal options. Local optometry and dentistry options were discussed, as well as issues related to the need of travel for health care, for dialysis treatments in particular.



## Resources Potentially Available

Resources, programs, and organizations in the community that are potentially available to address the significant health needs were identified by key informants giving input to this process. While not exhaustive, this list draws on the experiences and knowledge base of those directly serving the community. A list of community resources can be found in a separate resource section later in the report.

## Report Adoption, Availability, and Comments

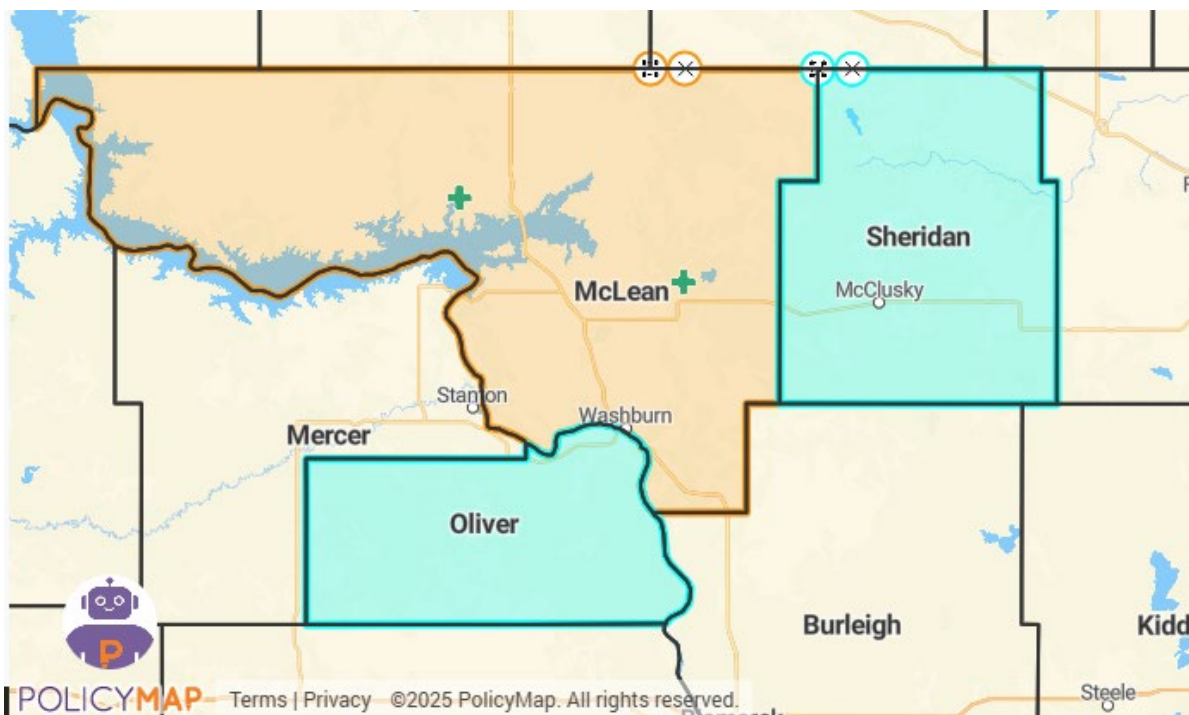
This CHNA report was adopted by the CHI St. Alexis Health Turtle Lake Board of Directors in April 2025. The report is widely available to the public on the hospital's web site, and a paper copy is available for inspection upon request at the Administration Office of CHI St. Alexis Health Turtle Lake. Written comments on this report can be submitted via mail to CHI Health, The McAuley Fogelstrom Center, (12809 W Dodge Rd, Omaha, NE 68154, Attn. Healthy Communities) – or electronically at <https://forms.gle/KGRq62swNdQyAehX8> – or by calling Ashley Carroll, Market Director, Community and Population Health, at (402) 343-4548.

## Community Definition

CHI St. Alexis Health Turtle Lake identified McLean County, North Dakota as the primary service area for this CHNA. Sheridan and Oliver counties in North Dakota are considered the secondary service area (Figure A). As a Critical Access Hospital, CHI St. Alexis Health Turtle Lake's primary service area is considered the county in which it is located (McLean County, ND). CHI St. Alexis Health Turtle Lake also serves residents of Sheridan and Oliver counties, where there are no local hospitals. McLean County is also home to CHI St. Alexis Health Garrison in Garrison, ND.

McLean County is designated as a Health Professional Shortage Area (HPSA) and a Medically Underserved Area (MUA) by the United States Health Resources & Services Administration. McLean County is a rural county located in west central North Dakota and has an estimated population of 9,781.

**Figure A: CHI St. Alexis Health Turtle Lake Community Health Needs Assessment Service Area**



The following zip codes correspond to 80 percent of patient admissions to CHI St. Alexius Health Turtle Lake: 58463, 58477, 58559, 58575, 58576, 58577, 58579, 58723, and 58792.

Core demographics for McLean County are summarized in Table 1.

<b>Table 1. Core Demographic Summary, McLean County, North Dakota</b>	
<b>Measure</b>	<b>McLean County, ND</b>
Community Description	Rural
Population	9,781
<i>Racial and Ethnic Distribution</i>	
White, non-Hispanic alone	87.7%
American Indian and Alaska Native alone	6.4%
Black or African American alone	0.4%
Asian or Pacific Islander alone	1.1%
Some other race alone	1.0%
Two or more races	2.9%
Hispanic Origin (of any race)	2.7%
Median Household Income	\$80,556
Percent of Persons below Poverty Rate	6.9%
Unemployment Rate	3.1%
Percent Population with less than High School Diploma	6.8%
Percent of People 5 and Older who are Non-English Speaking	1.0%
Percent of People without Health Insurance	10.0%
Percent of People with Medicaid	8.7%
Health Professional Shortage Area	Yes
Medically Underserved Area	Yes
Number of Hospitals in the County	2

## Hospital Description

CHI St. Alexius Health Turtle Lake, a critical access hospital located in Turtle Lake, North Dakota, has a long and storied history dating back to 1947. Established through the efforts of the Turtle Lake Hospital Association, the hospital was built with the mission of providing excellent health care services in a patient-centered environment, prioritizing the well-being of every individual.

The hospital's journey has been marked by significant milestones, including its affiliation with St. Alexius Medical Center in Bismarck in 1987 and its subsequent integration into Catholic Health Initiatives (CHI) in 2015. This affiliation has allowed the hospital to expand its services and access a wider network of health care resources.

Despite its rural location, CHI St. Alexius Health Turtle Lake has thrived due to strong community support. The local residents value having a professional medical facility close to home, recognizing its importance for their health and well-being. The hospital's commitment to serving the community is evident in its dedication to providing quality medical treatment and its continuous efforts to upgrade its services.

As a 25-bed critical access hospital with a Level V Emergency Department, CHI St. Alexius Health Turtle Lake offers a range of services, including 24/7 emergency care, swing-bed programs, acute care services, an on-site lab, radiology, CT, and physical therapy services. In addition, the hospital manages two rural health clinics in Turtle Lake and Washburn. The hospital's professional and caring staff is dedicated to ensuring patients receive compassionate and excellent care.

The hospital's commitment to accessibility is reflected in its policy of not denying services due to the inability to pay. A discounted/sliding fee schedule is available based on family size and income, ensuring that everyone in the community has access to quality health care.

CHI St. Alexius Health Turtle Lake's journey is a testament to the power of community support and the dedication of its staff to providing high-quality health care in a rural setting. The hospital's continued growth and expansion are a testament to its commitment to serving the needs of its community and ensuring that everyone has access to the care they need.

## Assessment Process and Methods

Community health needs were assessed using a two-pronged analysis approach: secondary data from national and state sources; and primary data gathered from community members during a two-month survey period. CHI St. Alexius Health Turtle Lake solicited input from community organizations representing health, education, law enforcement, victim advocacy, social services, and the medically underserved to review and validate community health needs at a community input meeting held January 8, 2025.

### Secondary data: community profiles

Community profiles are an integral part of assessing community health needs. To get a complete sense of the community, multiple data sources with various indicators that inform social considerations were compiled and analyzed. Data sources include but are not limited to County Health Rankings, the American Community Survey (ACS), the Bureau of Economic Analysis (BEA), and the Centers for Disease Control and Surveillance (CDC). All community level data were compared to state and national data for context.

### Primary data: health needs survey and community discussion

To help supplement secondary data sources, community member input was solicited via an online survey and a community input meeting. The online survey was administered using the Qualtrics online survey platform from August 12 to October 16, 2024. The survey was administered using a QR code for public distribution using various online and print media and a survey link that was distributed by hospital personnel. At least one public health organization was invited to participate in the distribution of the community survey. The survey tool can be found in Appendix D.

The survey solicited feedback on respondents' perceptions of various issues and topics in six broad categories: people in my community, services in my community, concerns in my community, concerns about violence, medical services, and barriers to care. Survey data were analyzed using widely accepted standard descriptive statistics, such as measures of mean, median, and frequencies. Priority needs were identified as those issues with the greatest level of consensus among survey respondents. Survey findings are detailed later in this assessment. The questionnaire can be found in Appendix D and detailed results in Appendix E.

### Community Input

After the conclusion of the survey fielding period and the analysis and compilation of a draft report of the findings, NDSU CSR team members compiled the findings for a presentation in Turtle Lake on January 8, 2025 for community member discussion and feedback. There were 17 attendees, including representatives from:

- CHI St. Alexius Health Turtle Lake
- Lord's Pantry



- Chamber Progress
- TruCommunity Bank
- Turtle Lake Ambulance
- Northland Health Center
- CHI St. Alexius Health Bismarck
- McClusky/Turtle Lake Methodist
- Turtle Lake Hospital Association

The hospital invited written comments on the most recent CHNA report and Implementation Strategy both in the documents and on the website where they are widely available to the public. No written comments have been received.

CHI St. Alexius Health Turtle Lake collaborated with CHI St. Alexius Health Garrison on this CHNA. CHI St. Alexius Health Turtle Lake contracted with the North Dakota State University Center for Social Research to conduct the CHNA. The Center for Social Research developed community profiles and developed and conducted a community feedback survey that provided the foundation for this needs assessment.

## Assessment Data and Findings

The following sections provide a detailed community profile and survey results. Secondary data for Oliver and Sheridan counties are available in Appendices B and C.

### Community Profile

McLean County is a rural county in west central North Dakota. The county seat is Washburn and its largest city is Garrison. With 9,781 residents, McLean County is North Dakota's 15<sup>th</sup> most populous county. Like most of North Dakota, McLean County's racial composition is largely white, but there is a substantial American Indian population as well. The median household income in McLean County is higher than the median in North Dakota and the nation overall; however, home values are lower, as are the costs associated with home rental and ownership. McLean County's poverty rate is lower than both the statewide and national average.

McLean County has higher rates of adult smoking and adult obesity than the United States and North Dakota on average. The adult excessive drinking rate in McLean County is lower than the statewide average, 19 percent in McLean County compared to 23 percent statewide; however, half of all driving deaths involve alcohol. The county's leading causes of death in 2021 were malignant neoplasms, diseases of the heart, and accidents. McLean County has a lower annual flu shot rate than both North Dakota and the nation. McLean County has substantially more people per primary care physician, mental health care provider, and dentist than North Dakota and the nation overall.

McLean County faces relatively moderate to very high risk of loss due to various winter weather conditions including ice storms and strong winds. However, McLean County's overall risk due to natural hazards is relatively low. McLean County's social vulnerability is rated as very low. McLean County's community resilience is rated as very high. These factors combined give McLean County a relatively low National Risk Index Score, which is worse than most North Dakota counties but better than the average for counties nationally.

### Community Demographics

The American Community Survey's (ACS) most recent five-year estimate of McLean County's population is 9,781, making it the state's 15<sup>th</sup> most populous county. About 1 in 5 residents in McLean County are under the age of 18, and 1 in 4 are aged 65 and older (Table 2). The county's racial composition is largely non-Hispanic white (87.7 percent). The American Indian/Alaska Native population in McLean County comprised 6.4 percent of total population, which is slightly higher than the statewide average of 4.7 percent. The county's gender split is skewed slightly male, at 48.1 percent female and 51.9 percent male.

**Table 2: Population Estimates, McLean County, ND, North Dakota, and United States, by Age, Race/Ethnicity, and Sex (2022)**

Age Group	McLean Population	McLean Percentages	North Dakota Percentages	United States Percentages
0-4	523	5.3%	6.7%	5.7%
5-17	1,614	16.5%	16.9%	16.4%
18-24	551	5.6%	11.3%	9.4%
25-44	2,028	20.7%	27.1%	26.6%
45-64	2,657	27.2%	22.2%	25.3%
65 and older	2,408	24.6%	15.9%	16.5%
<b>Total</b>	<b>9,781</b>	<b>100.0%</b>	<b>100.0%</b>	<b>100.0%</b>
<b>Race and Ethnicity*</b>				
White, non-Hispanic alone	8,582	87.7%	83.0%	58.9%
American Indian and Alaska Native	628	6.4%	4.7%	0.8%
Asian alone	83	0.8%	1.6%	5.8%
Black or African American alone	40	0.4%	3.2%	12.5%
Native Hawaiian and Pacific Islander	32	0.3%	0.2%	0.2%
Some other race alone	93	1.0%	1.4%	6.0%
Two or more races	281	2.9%	4.4%	8.8%
Hispanic Origin (of any race)	261	2.7%	4.3%	18.7%
<b>Sex</b>				
Female	4,705	48.1%	48.6%	50.4%
Male	5,076	51.9%	51.4%	49.6%
<b>Total</b>	<b>9,781</b>	<b>100.0%</b>	<b>100.0%</b>	<b>100.0%</b>

\*Overlapping racial/ethnic categories mean that the percentages will not total to 100% of the population.

Source: U.S. Census Bureau, 2018-2022 American Community Survey (ACS) 5-year estimates.

Estimates from the ACS indicate that there are 4,176 households in McLean County with an average of 2.3 persons per household. Median household income is \$80,556 in McLean County, which is higher than the median household income for North Dakota (\$73,959) and the nation overall (\$75,149) (Table 3). About 83 percent of households are owner-occupied and median owner costs are \$1,537 per month including the mortgage. Median rent in McLean County is \$766 per month. Both median owner costs and median rent are lower in McLean County than in North Dakota and the United States overall. About 1 in 4 households are occupied by householders living alone and about 1 in 4 households have children in residence (Table 4). The percentage of householders living alone, households with residents aged 65 and older, and householders aged 65 and older living alone in McLean County are generally in line with averages for North Dakota and the U.S. overall.

**Table 3: Household Demographics, McLean County, ND, North Dakota, and United States (2022)**

Item	McLean County	North Dakota	United States
Total households	4,176	320,038	125,736,353
Owner-occupied housing rate	82.9%	63.2%	64.8%
Average household size (persons per household)	2.3	2.3	2.6
Median value of owned-occupied housing	\$222,100	\$232,500	\$281,900
Median monthly owner costs (with mortgage)	\$1,537	\$1,653	\$1,828
Median monthly owner costs (without mortgage)	\$534	\$551	\$584
Median gross rent	\$766	\$912	\$1,268
Median household income	\$80,556	\$73,959	\$75,149

Source: U.S. Census Bureau, 2018-2022 American Community Survey (ACS) 5-year estimates.

**Table 4: Household Characteristics, McLean County, ND, North Dakota, and United States (2022)**

Household Characteristics	McLean County Households	% of McLean County Households*	Percent of North Dakota Households*	Percent of United States Households*
Households with children aged 0-17	1,153	27.6%	27.8%	30.2%
Households with adults aged 65 and older	1,609	38.5%	26.7%	30.8%
Householders living alone	1,114	26.7%	33.2%	28.3%
Householders aged 65+ living alone	507	12.1%	11.8%	11.5%

\*Overlapping household characteristics mean that the percentages of households will not total to 100% of the total number of households.

Source: U.S. Census Bureau, 2018-2022 American Community Survey (ACS) 5-year estimates.

Estimates from the ACS indicate there are 4,493 adults in the workforce in McLean County. The largest industries in the county by percentage of the workforce are educational services, health care, and social assistance; agriculture, forestry, fishing, hunting, and mining; and transportation and warehousing, and utilities, which account for 23.2 percent, 18.5 percent, and 9.8 percent, respectively (Table 5). Other industries that employ substantial portions of the county's workforce include retail; construction; public administration; and arts, entertainment, recreation, accommodation, and food service. In 2023, the county's three largest employers were The Falkirk Mining Co., CHI St. Alexius Health Garrison, and the Garrison School District (NDLMI 2024).

**Table 5: Employment by Industry, McLean County, ND (2022)**

Sector	Estimated Workers	Percent of Workforce
Educational services, health care and social assistance	1,044	23.2%
Agriculture, forestry, fishing, hunting and mining	830	18.5%
Transportation and warehousing, and utilities	439	9.8%
Retail	337	7.5%
Construction	313	7.0%
Public administration	279	6.2%
Arts, entertainment, recreation, accommodation, food svc	276	6.1%
Other	1,414	31.47%
<b>Total workforce</b>	<b>4,493</b>	<b>100.0%</b>

Source: U.S. Census Bureau, 2018-2022 American Community Survey (ACS) 5-year estimates.

The poverty rate in McLean County is 6.9 percent, which is higher than the poverty rate in North Dakota (10.8 percent) and the nation overall (12.5 percent) (Table 6). Less than 1 in 10 (7.6 percent) children in McLean County live below the poverty line compared to 11.3 percent statewide and 16.7 percent nationally. One in five school-aged children in McLean County are eligible for free or reduced-price school lunch (20.6 percent), which is lower than both North Dakota overall (23.2 percent) and the national average (50.8 percent).

**Table 6: Poverty Characteristics, McLean County, ND, North Dakota, and United States (2022)**

Poverty Characteristics	McLean Estimate	McLean Percent*	ND Percent*	U.S. Percent*
All persons below poverty level (% of total population)	661	6.9%	10.8%	12.5%
All persons below 200% poverty level % of total population)	1,677	17.4%	24.7%	28.8%
Children aged 0-17 below poverty level (% of children 0-17)	161	7.6%	11.3%	16.7%
Adults aged 65+ below poverty level (% of adults 65+)	136	5.8%	9.1%	10.0%
Eligible recipients of free or reduced-price school lunch	362	20.6%	23.2%	50.8%

\*Differing populations and overlapping categories mean that percentages will not total to 100%.

Sources: U.S. Census Bureau, 2018-2022 American Community Survey (ACS) 5-year estimates; 2024 County Health Rankings & Roadmaps, a program of the University of Wisconsin Population Health Institute

Most residents in McLean County aged 25 and older have at least some college experience (61 percent); 22.2 percent have attained at least a bachelor's degree. This is lower than in North Dakota and the nation overall, where 31.4 percent and 34.3 percent of the population aged 25 and older, respectively, have at least a bachelor's degree. Fewer than one in 10 residents aged 25 and older in McLean County did not complete high school (6.8 percent), which is higher than in North Dakota (6.5 percent) but lower than the national average (10.9 percent) (Table 7).

**Table 7: Educational Attainment for Persons Aged 25 and Older, McLean County, ND, North Dakota, and United States (2022)**

Level of Education Attained	McLean County Estimate	McLean County Percent of Population 25 and Older	North Dakota Percent of Population 25 and Older	United States Percent of Population 25 and Older
Less than high school	481	6.8%	6.5%	10.9%
High school diploma or GED	2,283	32.2%	26.1%	26.4%
Some college or Associate's degree	2,751	38.8%	36.0%	28.5%
Bachelor's degree	1,294	18.2%	22.3%	20.9%
Graduate or professional degree	284	4.0%	9.1%	13.4%
<i>Total population aged 25 and older</i>	<i>7,093</i>	<i>100.0%</i>	<i>100.0%</i>	<i>100.0%</i>

Source: U.S. Census Bureau, 2018-2022 American Community Survey (ACS) 5-year estimates.

### Community Health Factors and Outcomes

As of 2021, McLean County has a slightly higher prevalence of adult cigarette smokers than in the U.S. and North Dakota overall; 17 percent of adult residents of McLean County smoke cigarettes compared to 16 percent of North Dakotans and 15 percent of Americans overall (Table 8). The adult obesity rate in McLean County (41 percent) is also higher than the rate in North Dakota and the nation overall (36 percent and 34 percent, respectively). Adults in McLean County were equally likely to report a lack of physical activity outside of work when compared to North Dakota overall (25 percent each), and slightly more likely when compared to the national average (23 percent). Although the percentage of adults who reportedly engage in excessive drinking is lower in McLean County than it is in North Dakota (19 percent compared to 23 percent, respectively), it is higher than the national average (18 percent) – and 50 percent of all driving deaths involve alcohol. About 4 in 10 adult residents of McLean County report that they have access to exercise opportunities (39 percent), which is much lower than North Dakota overall (76 percent) and the national average (84 percent).

The prevalence of McLean County residents reporting poor mental health days in the past month (3.7 days) is lower than North Dakota overall (4.0 days) and the national average (4.8 days).

**Table 8: Health Behaviors, McLean County, ND, North Dakota, and the United States (2021)**

Health Behavior	McLean County	North Dakota	United States
Adult Smoking	17%	16%	15%
Adult Obesity	41%	36%	34%
Adult Excessive Drinking	19%	23%	18%
Alcohol-Impaired Driving Deaths	50%	39%	26%
Physical Inactivity <sup>1</sup>	25%	25%	23%
Access to Exercise Opportunities <sup>2</sup>	39%	76%	84%
Poor Mental Health Days <sup>3</sup>	3.7	4.0	4.8

Source: 2024 County Health Rankings & Roadmaps, a program of the University of Wisconsin Population Health Institute. <sup>1</sup>Physical Inactivity refers to the percent of adults who report participating in no physical activity outside of work. <sup>2</sup>Access to Exercise Opportunities refers to the percent of adults who report living close to a park or recreation facility. <sup>3</sup>The average number of self-reported mentally unhealthy days in the past 30 days.

Leading causes of death for residents under age 75 in McLean County were malignant neoplasms and diseases of the heart, followed by accidents (Table 9). Life expectancy in McLean County is 77.6 years. This is lower than the life expectancy in North Dakota (78.1 years) but similar to the national average (77.6 years) (County Health Rankings & Roadmaps, 2024).

**Table 9: Leading Causes of Death in McLean County, ND Residents Under Age 75 (2019-2021)**

Cause of Death	Deaths	Rate Per 100,000 Population Under 75
Malignant Neoplasms	41	158.6
Diseases of the heart	36	139.3
Accidents <sup>1</sup>	13	Unreliable

Source: 2024 County Health Rankings & Roadmaps, a program of the University of Wisconsin Population Health Institute.  
<sup>1</sup>Crude rates per 100,000 population under 75 are unreliable due to the small number of deaths.

The rate of people under age 65 without health insurance in McLean County is similar to the rate in North Dakota and the nation overall. In McLean County, 10 percent of people under the age of 65 did not have health insurance, compared with 10 percent of all North Dakotans and 9 percent nationally (Table 10).

The annual flu shot rate in McLean County is 41 percent, which is eight percentage points lower than the North Dakota rate overall (49 percent) and five percentage points lower than the national average (46 percent).

The Food Environment Index is a measure of food security and access to healthy foods with a ranking system ranging from 0 (worst) to 10 (best). The McLean County Food Environment Index score was 8.7, which is lower than North Dakota's score of 9.1 but higher than the national score of 7.7 (Table 10).

**Table 10: Other Health Factors, McLean County, ND, North Dakota, and United States**

Description of Factor	McLean County	North Dakota	United States
Uninsured Rate, 2021	10%	9%	10%
Medicaid Coverage, 2022	8.7%	11.9%	20.4%
Unemployment Rate, 2022	3.1%	2.1%	3.7%
Low Birthweight Rate, 2016-2022	6%	7%	8%
Annual Mammogram Rate, 2021 <sup>1</sup>	48%	53%	43%
Annual Flu Shot Rate, 2021 <sup>2</sup>	41%	49%	46%
Food Environment Index, 2019-2021 <sup>3</sup>	8.7	9.1	7.7

Sources: US Census Bureau's Small Area Health Insurance Estimates (SAHIE) program, 2021; The Local Area Unemployment Statistics (LAUS) program of the Bureau of Labor Statistics, 2022; Map the Meal Gap, Feeding America, 2021; The Centers for Medicare & Medicaid Services Office of Minority Health's Mapping Medicare Disparities (MMD) Tool, 2021. <sup>1</sup>Percentage of female Medicare enrollees who received an annual mammogram. <sup>2</sup>Percent of Medicare enrollees who received an annual flu shot. <sup>3</sup>The Food Environment Index is a measure of food environment that combines food insecurity rates with rates of access to healthy foods. It is scored on a scale from 0 (worst) to 10 (best).

The ratio of McLean County residents to primary care physicians, mental health care providers, and dentists is higher for each type of provider when compared to North Dakota and the nation overall (Table 11). McLean County is designated as a Health Professional Shortage Area (HPSA) and a Medically Underserved Area (MUA) by the United States Health Resources & Services Administration. McLean County is also served by CHI St. Alexius Health Garrison.

**Table 11: Number of Residents Per Health Care Provider in McLean County, ND, and the U.S.**

Type of Provider	McLean County	North Dakota	United States
Primary Care Physicians, 2021	3,270:1	1,290:1	1,330:1
Mental Health Care Providers, 2024	2,460:1	420:1	300:1
Dentists, 2022	3,270:1	1,420:1	1,360:1

Sources: Health Resources & Services Administration, Area Health Resource Files; CMS, National Provider Identification Registry.



## National Risk Index

The Federal Emergency Management Agency (FEMA) administers the National Risk Index, a dataset and tool that estimates the risk level for natural disasters at the county level. A county's Risk Index is calculated using three metrics: Expected Annual Loss, Social Vulnerability, and Community Resilience. A community's exposure to and ability to cope with hazardous conditions can have a substantial impact on factors that inform community health outcomes, such as the strain on that community's health care system and its ability to make sure that residents have access to essential goods and services in times of crisis.

Overall, McLean County's National Risk Index rating is Relatively Low. This indicates a fairly strong general preparedness for and ability to recover from natural and manmade hazards. Three-fourths (77.4 percent) of North Dakota counties have a lower National Risk Index score than McLean County and 54.2 percent of counties nationally have a lower score (Table 12).

**Table 12: National Risk Index Percentiles for McLean County, ND when compared to North Dakota Counties and U.S. Counties (2024)**

Index	Percentile within North Dakota	U.S. Percentile
Expected Annual Loss	75.5	57.3
Social Vulnerability	20.8	4.9
Community Resilience	73.6	80.6
<i>National Risk Index</i>	<i>77.4</i>	<i>54.2</i>

Note: The Risk Index can be read as "77.4% of counties in North Dakota have a lower Risk Index than McLean County; 54.2% of U.S. counties have a lower Risk Index than McLean County."  
 Sources: FEMA, National Risk Index; CDC/ATSDR Social Vulnerability Index 2022; University of South Carolina's Hazards and Vulnerability Research Institute (HVRI)'s Baseline Resilience Indicators for Communities (HVRI BRIC).

## Expected Annual Loss

Expected Annual Loss scores are calculated by combining a community's exposure to natural hazards, annualized frequency of hazards, and the historic loss ratio for various natural hazards. McLean County's overall Expected Annual Loss is rated as Relatively Low overall on a five-point scale: Very Low, Relatively Low, Relatively Moderate, Relatively High, and Very High (NRI 2024). However, the county faces very high winter weather hazards. Expected annual loss caused by ice storms, strong winds, winter weather, and cold waves is also rated either relatively moderate or relatively high. McLean County's expected annual loss is higher than 75.5 percent of North Dakota counties and 57.3 percent of counties nationally (Table 12).

## Social Vulnerability Index

Social vulnerability is a concept related to a community's ability to prepare for and respond to hazardous events. A community's social vulnerability is gauged using the Social Vulnerability Index (SVI) (ATSDR) (CDC, 2024): an aggregated index of 16 socioeconomic factors categorized into four themes: socioeconomic status, household characteristics, racial and ethnic minority status, and housing type/transportation. SVI is a nationally recognized measure of a location's social vulnerability, and therefore its ability to prepare for and respond to disasters. While the SVI technically is a measure of ability to respond to natural disasters and aid emergency planning, the index is an accepted tool to gauge overall community socioeconomic well-being. A higher SVI indicates a higher vulnerability to hazard.

McLean County's Social Vulnerability is rated Very Low. Overall, McLean County has higher social vulnerability than 20.8 percent of North Dakota counties and 4.9 percent of counties nationally. For a more thorough breakdown of McLean County's Social Vulnerability see Appendix A.

## Community Resilience

A community's Community Resilience score is defined as its ability to prepare for, withstand, and recover from

hazardous events (Cutter et al. 2014). Categories considered in the compilation of scores include Human Well-Being, Economy, Infrastructure, Governance, Community Capacity, and Environment. McLean County's Community Resilience ranking is Very High. McLean county has higher community resilience than 73.6 percent of North Dakota's 53 counties and 80.6 percent of counties nationally. Community resilience indicators suggest the county is well-prepared to respond to hazardous events.

## Community Health Survey Analysis

The survey solicited feedback on respondents' perceptions of various issues and topics in six broad categories: people in my community, services in my community, concerns in my community, concerns about violence, medical services, and barriers to care. Survey data were analyzed using widely accepted standard descriptive statistics, such as measures of mean, median, and frequencies. Priority needs were identified as those issues with the greatest level of consensus among survey respondents. Detailed survey findings can be found in Appendix E.

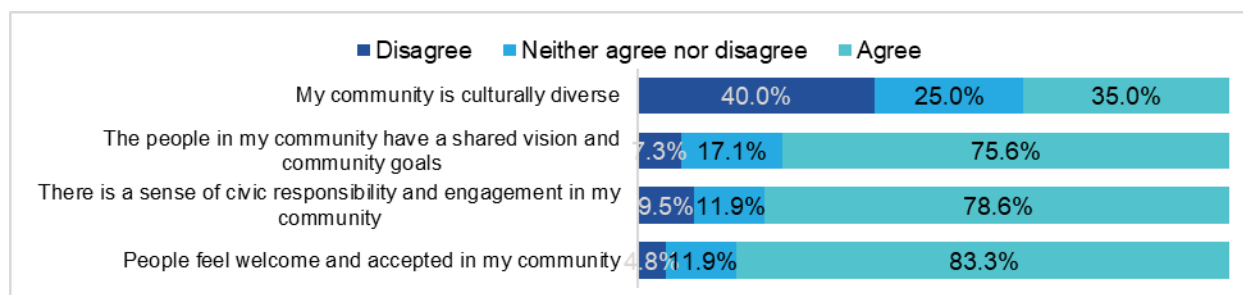
## Respondent Demographics

Forty-two people responded to the Turtle Lake CHNA survey with a mean age of 52 years; more than half (56 percent) of respondents were aged 45 to 64 years. Ninety-three percent of respondents were female and the same percentage identified as white. Sixty percent of respondents reported an annual household income of \$75,000 or more and 90 percent had at least some post-secondary schooling; 41 percent had a bachelor's or graduate degree. Seventy-two percent of respondents were employed full-time, 15 percent were employed part-time, and 13 percent were retired.

## Findings

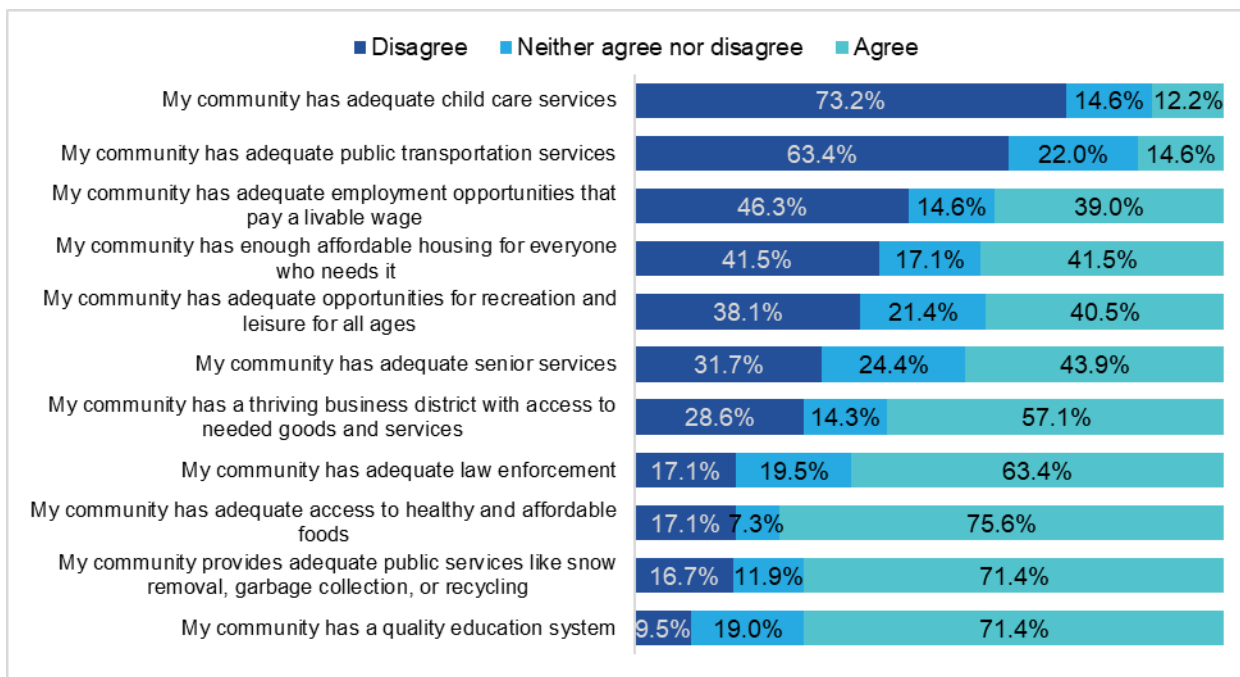
Respondents were asked a series of statements about the people in their community. Overall, most agreed that people feel welcome and accepted in their community (83 percent) and that there is a sense of civic responsibility and engagement in their community (79 percent). Seventy-six percent of respondents agreed the people in their community have a shared vision and community goals. However, far fewer respondents (35 percent) agreed their community is culturally diverse; 25 percent neither agreed nor disagreed and 40 percent disagreed with this statement (Figure 1).

**Figure 1: People in My Community, Community Health Needs Assessment, 2024**



*Respondent n: 40-42.*

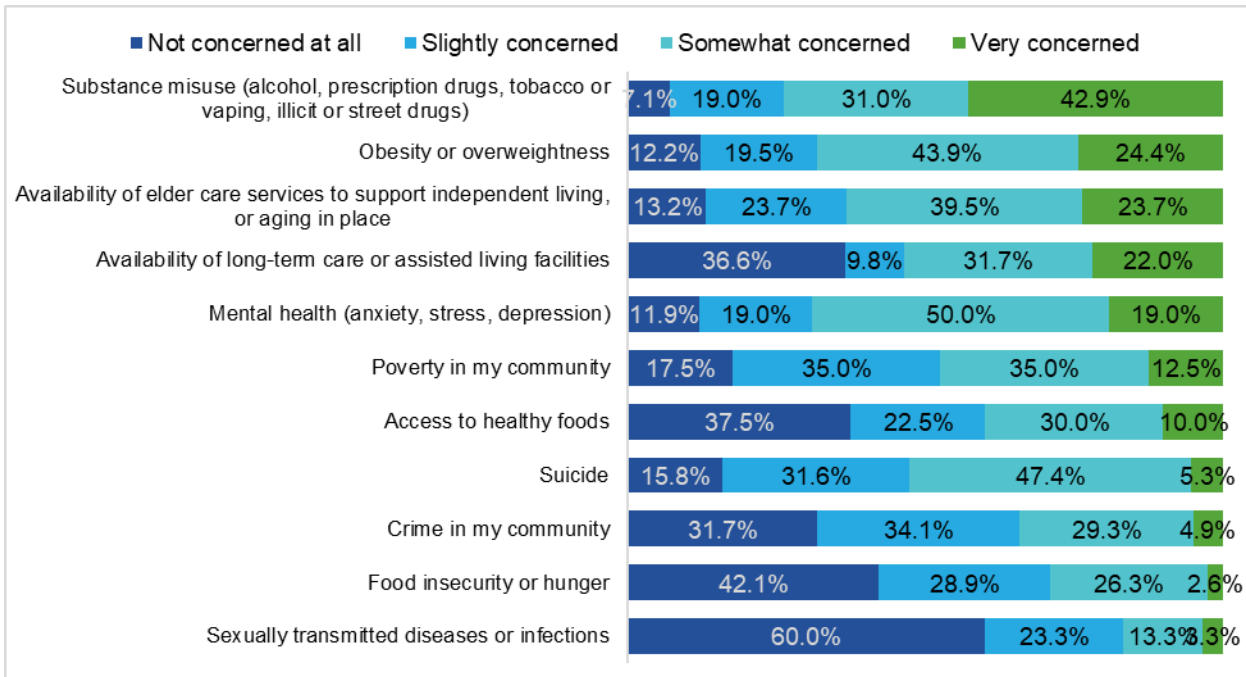
About three-quarters (76 percent) of respondents agreed their community has adequate access to healthy and affordable foods. Seventy-one percent agreed their community has a quality education system and another 71 percent agreed their community provides adequate public services (such as snow removal). A similar percentage (73 percent) disagreed that their community has adequate child care services and just under two-thirds (63 percent) disagreed that their community has adequate public transportation services (Figure 2).

**Figure 2: Services in My Community, Community Health Needs Assessment, 2024**


*Respondent n: 41-42.*

Most respondents were at least slightly concerned about substance misuse in their community; 43 percent were very concerned, 31 percent were somewhat concerned, and 19 percent were slightly concerned. This issue had the highest percentage of respondents who were very concerned. About one-fourth of respondents were very concerned about obesity or overweightness in their community (24 percent) and about the availability of elder care services to support independent living (aging in place) (24 percent). Twenty-two percent of respondents were very concerned about the availability of long-term care or assisted living facilities; however, 37 percent were not at all concerned about this issue. Sixty percent of respondents were not concerned at all about sexually transmitted diseases or infections (STIs) (Figure 3).

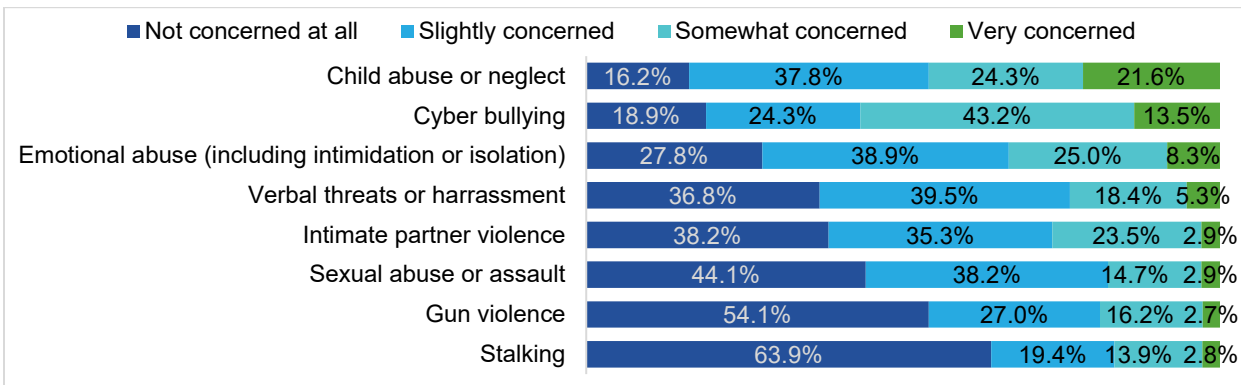
**Figure 3: Concerns in My Community, Community Health Needs Assessment, 2024**



Respondent n: 30-42.

When asked about specific violence concerns in their community, most respondents expressed at least slight concern about child abuse or neglect; 22 percent were very concerned, 24 percent were somewhat concerned, and 38 percent were slightly concerned about this issue. Cyber bullying was at least a slight concern for 81 percent of respondents; 14 percent were very concerned. Stalking was of no concern to 64 percent of respondents and gun violence was of no concern to 54 percent of respondents (Figure 4).

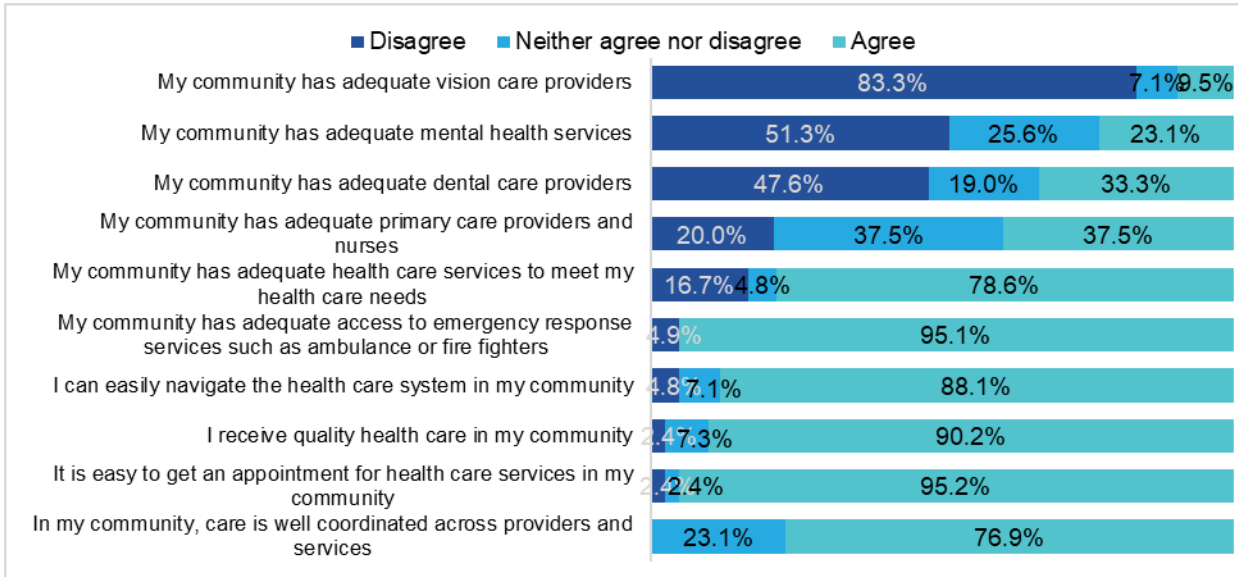
**Figure 4: Violence Concerns in My Community, Community Health Needs Assessment, 2024**



Respondent n: 34-38.

Most respondents were positive about the medical services in their community. While 23 percent of respondents neither agreed nor disagreed with the statement that care is well-coordinated across providers and services in their community, 77 percent agreed with this statement (no one disagreed). Ninety-five percent of respondents agreed that it is easy to get an appointment for health care services in their community and the same percentage agreed their community has adequate access to emergency response services (such as an ambulance). However, 83 percent of respondents disagreed their community has adequate vision care providers and 51 percent disagreed their community has adequate mental health services. A slightly lower percentage (48 percent) disagreed their community has adequate dental care providers (Figure 5).

**Figure 5: Medical Services in My Community, Community Health Needs Assessment, 2024**

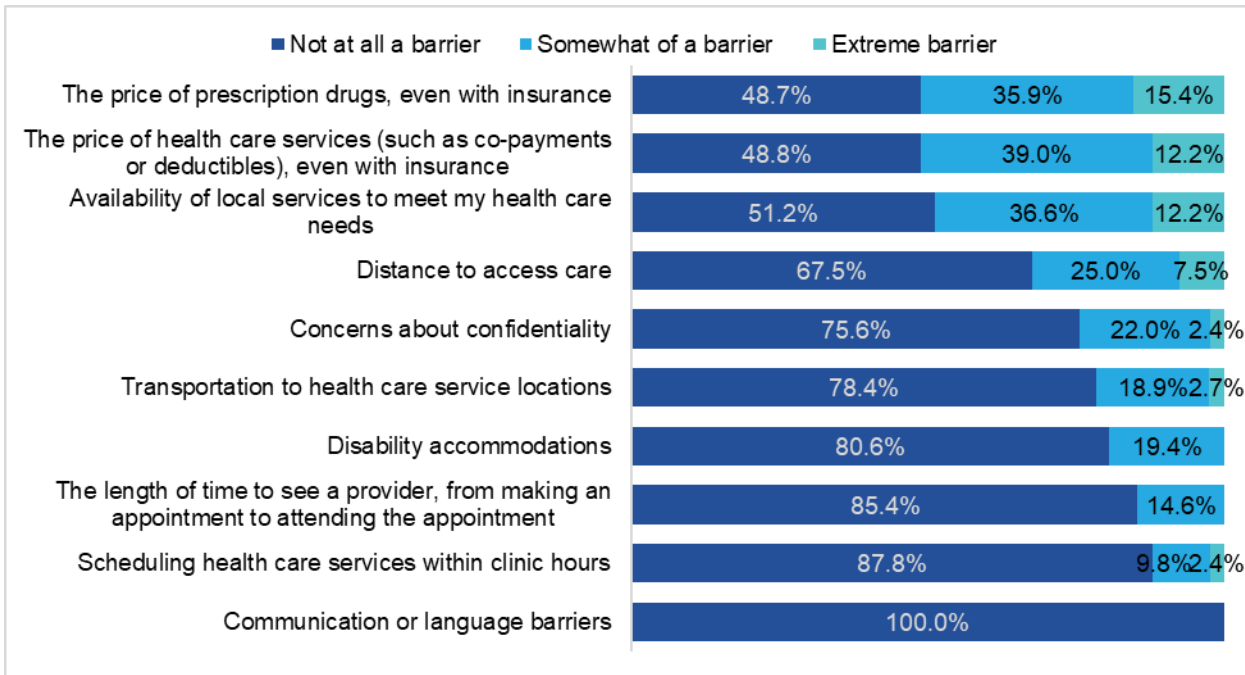


Respondent n: 39-42.



Respondents were comfortable with most elements of accessing health care in their community, citing few barriers. However, the price of prescription drugs, even with insurance, was considered at least somewhat of a barrier to 51 percent of respondents (15 percent considered this an extreme barrier). A similar percentage (50 percent) considered the price of health care services, even with insurance, to be at least somewhat of a barrier to accessing care. Additionally, the availability of local services to meet needs was considered at least somewhat of a barrier for 49 percent of respondents (Figure 6).

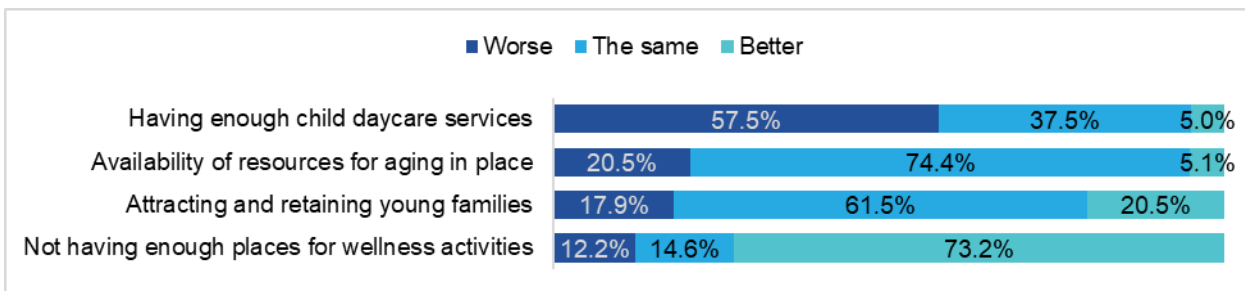
**Figure 6: Barriers to Accessing Health Care Services, Community Health Needs Assessment, 2024**



Respondent n: 36-41.

Respondents were asked about the issues identified in the previously conducted CHNA in 2022 and perceptions of change since then. While 73 percent of respondents saw improvement in having enough places for wellness activities, 58 percent said that having enough child daycare services has worsened since 2022. Most respondents thought the availability of resources for aging in place is about the same (74 percent) as was attracting and retaining young families (62 percent) (Figure 7).

**Figure 7: Previous CHNA Issues, Community Health Needs Assessment, 2024**

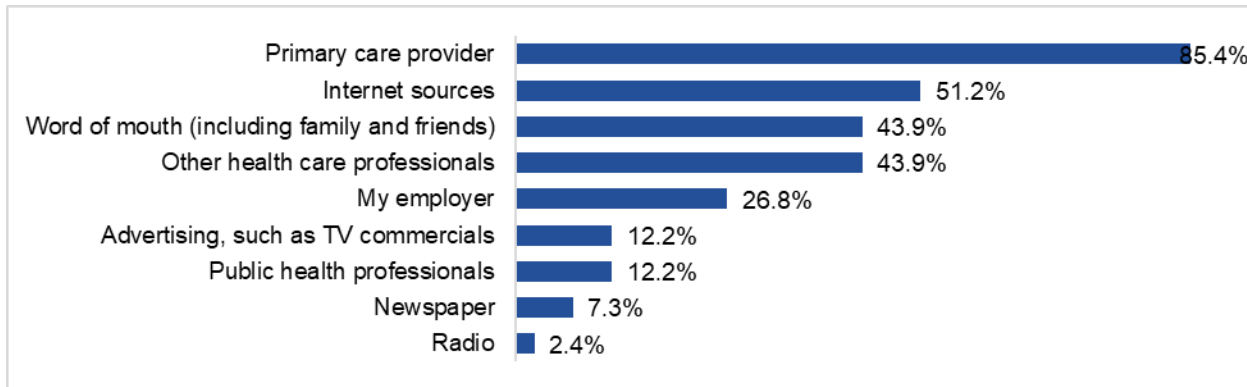


Respondent n: 39-41.

In the past year, most respondents (82 percent) had an annual physical exam, 77 percent had a blood pressure or cholesterol screening, 69 percent received a vaccination, 62 percent had a dental exam, and 62 percent had a vision exam (Appendix E).

Nearly all respondents (95 percent) said they have a primary care doctor and 85 percent cited their primary care provider as their source for health information. Fifty-one percent said they used internet sources and 44 percent received health information from other health care professionals. The same percentage (44 percent) received health information from word-of-mouth sources such as friends or family (Figure 8).

**Figure 8: Sources of Health Information, Community Health Needs Assessment, 2024**



*Respondent n: 41. Respondents were permitted to select more than one response.*

Most respondents had health insurance through an employer (85 percent) and 12 percent had health insurance through a private source or government program (Appendix E).

## Significant Community Health Needs

Based on an analysis of survey data, the following were identified as issues with the greatest degree of consensus among survey respondents. Secondary data are provided in support of these findings.

- **Community services.** Nearly 3 in 4 respondents (73 percent) disagreed that their community has adequate child care services. Child care services was identified as a priority need in the previous CHNA conducted in 2022 and 58 percent of survey respondents indicated that the availability of child care services has worsened since then. More than 4 in 5 respondents (83 percent) disagreed that their community has adequate vision care providers, 63 percent disagreed that their community has adequate public transportation services, and 51 percent disagreed their community has adequate mental health services. A slightly lower percentage (48 percent) disagreed that their community has adequate dental care providers. Respondents' perception of the availability of health care providers is consistent with secondary data on the ratio of residents per provider. The ratio of population to primary care physicians, mental health care providers, and dental providers was substantially higher in McLean County than in North Dakota and the nation overall.
- **Affordability of health care services and prescriptions.** The price of prescription drugs, even with insurance, was considered at least somewhat of a barrier to 51 percent of respondents; 15 percent considered the price of prescription drugs an extreme barrier. A similar percentage (50 percent) considered the price of health care services, even with insurance, to be at least somewhat of a barrier to accessing care.
- **Psychological abuse and crime.** Respondents expressed moderate levels of concern related to child abuse and cyber bullying in their community. Forty-five percent of respondents were at least somewhat concerned about child abuse, 22 percent were very concerned. Fifty-seven percent of respondents were at least somewhat concerned about cyber bullying.
- **Mental health (anxiety, stress, depression).** The ratio of population to mental health providers was substantially higher in McLean County (2,460:1) than in North Dakota (420:1). Consistent with the lack of mental health care providers in their community, 69 percent of respondents were at least somewhat concerned about mental health in their community.
- **Substance misuse.** Most respondents were at least slightly concerned about substance misuse in their community (alcohol, prescription drugs, tobacco or vaping, illicit or street drugs) (93 percent); 43 percent were very concerned, 31 percent were somewhat concerned, and 19 percent were slightly concerned. Respondents had the highest level of agreement regarding substance misuse in their community among all various concerns included in the questionnaire.

During the January 8, 2025 community input meeting, attendees discussed survey findings, whether survey findings aligned with their perceptions of their community's needs, and the demographics of survey respondents. Meeting attendees indicated that the issues identified in the presentation accurately reflected issues of concern in their community. They discussed a lack of child care – cost was not a concern, but staffing, retention, and compliance with regulations were concerns. As well, the high cost of prescription drugs was discussed, as was wellness in the community; attendees were positive about changes in fitness access, but less positive about things like cooking skills and healthy meal options. Local optometry and dentistry options were discussed, as well as issues related to the need for travel for health care, in particular for dialysis treatments.

Some of the health needs listed for prioritization were not flagged in the survey as problematic by respondents; however, the demographic that responded to the survey may not have reflected all high-needs populations in the community.

## Resources Potentially Available to Address Needs


Programs, resources, and organizations in the community that are potentially available to address the significant health needs were identified by key informants giving input to this process. While not exhaustive, the list draws on the experiences and knowledge base of those directly serving our community. The following potential partners may be useful resources as CHI St. Alexius Health Turtle Lake strives to meet community needs.

- The Lord's Pantry
- The Share Exchange
- Turtle Lake Clinic
- Turtle Lake Rexall Drug
- Northland Health Center
- North Dakota Aging and Disabled Resources Link
- National Health Service Core
- CHI St. Alexius Health at Home
- Meals on Wheels
- MedicAlert Systems
- Veteran Services
- Hospital Auxiliary
- Turtle Lake Chamber of Progress
- Hospital Association Board
- Turtle Lake Ambulance Services

## Impact of Actions Taken Since Preceding CHNA

### 2023-2025 Community Health Implementation Strategy


Health Need: Availability of resources to help the elderly stay in their homes

 <b>Health Need: Availability of resources for elderly to stay in their homes</b>	
<b>Strategy or Program</b>	<b>Summary Description</b>
Strategy 1.1	Investigate existing resources available within the county that provide assistance to the elderly population.
Strategy 1.2	Become an Advocate to our elderly population by making information about availability of resources either within the county or our own hospital services.
Strategy 1.3	<p>Investigating QSP services and compile a list of QSP providers within our region to offer respite and adult caregiver services.</p> <p><b>FY2023 Key Activities:</b></p> <ol style="list-style-type: none"> <li>1. Work in partnership with CHI St. Alexius Health at Home for patients needing medical assistance at home. Providers have been educated on the availability of Health at Home.</li> <li>2. Hold a Fall Prevention Program on a yearly basis for the public. Our Physical Therapy Assistant held an education and exercise session at one of the local churches twice a week for 2 months teaching balance and strengthening exercises.</li> <li>3. Provide information regarding Meals on Wheels, MedicAlert systems, Veteran Services and McLean or Sheridan County provided programs to elderly population. A social worker designee was recently hired who will be involved in making our patients as well as the public aware of services available. The position had been empty for five months.</li> <li>4. Market the availability of Day Care and Respite services available at CHI St. Alexius Health Turtle Lake for Care-givers needing time away from elderly family. Activity did not occur due to staffing and resource constraints. We intend to resume this program in FY24. We have recently hired a social worker designee who will be involved in making our patients as well as the public aware of services available. The position had been empty for five months.</li> <li>5. Participate with Hospital Auxiliary during their public programs with guest speakers on issues involving the elderly. Our Auxiliary did not hold any meetings for the elderly this past year. Local Senior Center was demolished and they are looking for a place to gather. Will resume meetings after a site has been secured.</li> </ol> <p><b>FY23 Measures:</b></p> <ol style="list-style-type: none"> <li>1. Number of patients added since the education of our providers and nursing staff to home health: 5</li> <li>2. Individuals reached/trained for balance and strengthening exercises: 25</li> <li>3. No measures to report during this period.</li> <li>4. Expectation is that we will be marketing our Adult Day care Services and Respite Services this coming year and have measures to report in FY24.</li> <li>5. Number of Auxiliary meetings for the elderly held during this period: 0</li> </ol>




	<p><b>FY2024 Key Activities:</b></p> <ol style="list-style-type: none"> <li>1. Working in partnership with CHI St. Alexius Health at Home for patients needing medical assistance at home. Providers continue to be educated on the availability of Health at Home.</li> <li>2. Our Physical Therapy Assistant held an education and exercise session at one of the local churches twice a week for 2 months teaching balance and strengthening exercises.</li> <li>3. Provide information regarding Meals on Wheels, MedicAlert systems, Veteran Services and McLean or Sheridan County provided programs to elderly population. A social worker designee is involved in making our patients as well as the public aware of services available.</li> <li>4. Market the availability of Day Care and Respite services available at CHI St. Alexius Health Turtle Lake for Care-givers needing time away from elderly family. Activity did not occur due to staffing and resource constraints.</li> <li>5. Participate with Hospital Auxiliary during their public programs with guest speakers on issues involving the elderly.</li> </ol> <p><b>FY24 Measures:</b></p> <ol style="list-style-type: none"> <li>1. Number of patients added since the education of our providers and nursing staff to home health: 5</li> <li>2. Individuals reached/trained for balance and strengthening exercises: 25</li> <li>3. No measures to report during this period.</li> <li>4. Expectation is that we will be marketing our Adult Day care Services and Respite Services this coming year and have measures to report in FY25.</li> <li>5. Number of Auxiliary meetings for the elderly held during this period: 0</li> </ol>
<b>Anticipated Impact</b>	They do have the capability to do telehealth visits in their home due to the pandemic. Health at Home came to the medical staff meeting to inform medical providers of the services they provide to keep patients in their homes. With the opening of the RHC clinic in the Turtle Lake Hospital they are beginning to consider implementing chronic care management (CCM) through their RHC.
<b>Planned Collaboration</b>	Information will be made available in conjunction with Health at Home, meals on wheels, MedicAlert, public health, and veteran services.

## Health Need: Not having enough places for exercise and wellness activities


 <b>Health Need: Not having enough places for exercise and wellness activities</b>	
<b>Strategy or Program</b>	<b>Summary Description</b>
<p>Strategy 2.1</p> <p>Strategy 2.2</p>	<p>Work with supporting Hospital Boards to provide activities that encourage wellness and exercise opportunities.</p> <p>Work with the Turtle Lake Ambulance. The Ambulance is putting in an exercise facility within their building. We will discuss the options of opening it to the public for exercise and wellness activities.</p> <p><b>FY2023 Key Activities:</b></p> <ol style="list-style-type: none"> <li>1. Make Health Fairs an annual event in conjunction with the Dakota Feeder Calf Show. Health Fair held October 2022. Checked Blood Pressure blood sugars and Hemoglobins at Health Fair. This will be an annual event.</li> <li>2. Offer yearly Wellness Challenges for the general public to participate in and provide educational opportunities in areas of nutrition, exercise, etc., during the challenge. Completed a 6-week Wellness Challenge 3/23. Plan to continue this offering.</li> <li>3. Offer Adult Fitness program and make available exercise equipment to the general public for use. On-going work in conjunction with the community in opening a wellness center at the community center that will be open to the public. Yoga classes are being offered at the community center.</li> </ol> <p><b>FY23 Measures:</b></p> <ol style="list-style-type: none"> <li>1. Number of community members attended the Health Fair: 25</li> <li>2. Number of community members participated in the yearly Wellness Challenge: 25</li> <li>3. Will track usage and number of participants for next fiscal years as this facility only recently opened.</li> </ol> <p><b>FY2024 Key Activities:</b></p> <ol style="list-style-type: none"> <li>1. Held a Health Fair in conjunction with the Dakota Feeder Calf Show. Checked Blood Pressure blood sugars and Hemoglobins at Health Fair.</li> <li>2. Offer yearly Wellness Challenges for the general public to participate in and provide educational opportunities in areas of nutrition, exercise, etc., during the challenge.</li> <li>3. Offer Adult Fitness program and make available exercise equipment to the general public for use. On-going work in conjunction with the community in opening a wellness center at the community center that will be open to the public. Yoga classes are being offered at the community center.</li> </ol> <p><b>FY24 Measures:</b></p> <ol style="list-style-type: none"> <li>1. Number of community members attended the Health Fair: 30</li> <li>2. Number of community members participated in the yearly Wellness Challenge: 50</li> <li>3. Will track usage and number of participants for next fiscal years as this facility only recently opened.</li> </ol>

<b>Anticipated Impact</b>	CHI St. Alexius Health Turtle Lake has offered “fitness” challenges with incentives for community members. These challenges are usually offered once or twice a year. With COVID-19, they were unable to do so in 2020 and 2021. CHI St. Alexius Health Turtle Lake did offer a fitness challenge for their employees that went over very well. CHI St. Alexius Health Turtle Lake has also participated in a variety of health fairs.
<b>Planned Collaboration</b>	Health fairs and wellness challenges are done in collaboration with Hospital Association and Auxiliary. Turtle Lake Ambulance Service is planning on putting in a fitness center in their planned ambulance bay which will be opened to the public.

### Health Need: Having enough child daycare services

 <b>Health Need: Having enough child daycare services</b>	
<b>Strategy or Program</b>	<b>Summary Description</b>
Strategy 3.1  Strategy 3.2	<p>Increase available daycare services for working families.</p> <p>Work with the public health, city board, economic development, to look into options for a community daycare.</p> <p><b>FY2023 Key Activities:</b></p> <ol style="list-style-type: none"> <li>1. Work with supporting Hospital Boards to support any local effort to open a community daycare center. Turtle Lake Area Chamber of Commerce is leading this effort. Minimal progress has been made due to the condition of the property identified as a site.</li> <li>2. Work with the public health unit to offer safe sitter classes to students in the community to increase available trained babysitters.</li> </ol> <p><b>FY23 Measures:</b></p> <ol style="list-style-type: none"> <li>1. Project is ongoing with planning. There are no measures to report at this time.</li> <li>2. Project is ongoing with planning for next fiscal year. There are no measures to report at this time.</li> </ol> <p><b>FY2024 Key Activities:</b></p> <ol style="list-style-type: none"> <li>1. Work with supporting Hospital Boards to support any local effort to open a community daycare center. Turtle Lake Area Chamber of Commerce is leading this effort. Minimal progress has been made due to the condition of the property identified as a site.</li> <li>2. Worked with the public health unit to plan offering safe sitter classes to students in the community to increase available trained babysitters (tentatively scheduled in FY25).</li> </ol> <p><b>FY24 Measures:</b></p> <ol style="list-style-type: none"> <li>1. Project is ongoing with planning. There are no measures to report at this time.</li> <li>2. Project is ongoing with planning for next fiscal year. There are no measures to report at this time.</li> </ol>
<b>Anticipated Impact</b>	With collaborative efforts the community will work towards providing additional services for children. This includes opening additional daycare services which allow parents to have more options in regards to care for their children while they pursue their chosen careers.
<b>Planned Collaboration</b>	CHI St. Alexius Health Turtle Lake will work in collaboration with the hospital association and auxiliary boards and the Turtle Lake Chamber of Progress.

Health Need: Health-Related Social Needs (HRSN) with the goal of improving patient health

	<b>Health Need: Health-Related Social Needs (HRSN) with the goal of improving patient health</b>
<b>Strategy or Program Name</b>	<b>Summary Description</b>
Strategy 4.1	<p>Identify patients' HRSN through screening and referrals to community-based organizations.</p> <p><b>FY2023 Key Activities:</b></p> <ol style="list-style-type: none"> <li>1. Hire a Community Healthcare Worker (CHW).</li> <li>2. We will begin screening patients for HRSN in FY24 and connecting them to community resources (e.g., food, transportation, etc.).</li> </ol> <p><b>FY24 Measures:</b> Reporting will begin FY24 when the CHW is hired (FY24:Q2).</p> <p><b>FY2024 Key Activities:</b></p> <ol style="list-style-type: none"> <li>1. Hire a Community Healthcare Worker (CHW).</li> <li>2. Continue screening patients for HRSN in FY25 and connecting them to community resources (e.g., food, transportation, etc.).</li> </ol> <p><b>FY24 Measures:</b> Reporting will begin FY25. CHW was primarily working in the Garrison service area. CHW only recently expanded to the Turtle Lake area.</p>

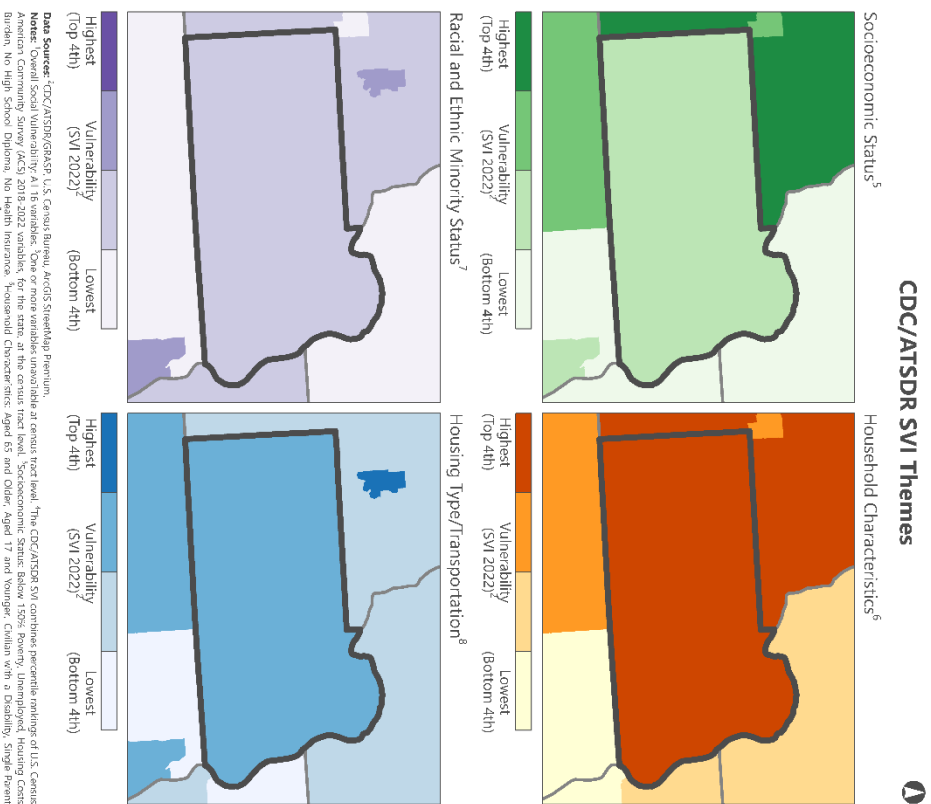
## References

- Centers for Disease Control and Prevention. (2024). *CDC/ATSDR SVI: Fact sheet*. Centers for Disease Control and Prevention. [https://www.atsdr.cdc.gov/placeandhealth/svi/fact\\_sheet/fact\\_sheet.html](https://www.atsdr.cdc.gov/placeandhealth/svi/fact_sheet/fact_sheet.html)
- County Health Rankings & Roadmaps (2024). *McLean County, North Dakota*. County Health Rankings & Roadmaps. <https://www.countyhealthrankings.org/health-data/north-dakota/mclean?year=2024>
- Cutter, S. L., Ash, K. D., & Emrich, C. T. (2014). The geographies of community disaster resilience. *Global Environmental Change*, 29, 65–77. <https://doi.org/10.1016/j.gloenvcha.2014.08.005>
- National Risk Index. (2024). *McLean County, North Dakota*. Federal Emergency Management Agency. <https://hazards.fema.gov/nri/>
- North Dakota Labor Market Information (2024). *North Dakota Largest Employers*. North Dakota Job Service. <https://www.ndlmi.com/vosnet/gsipub/documentView.aspx?docid=682>

## Appendix A: CDC/ATSDR Social Vulnerability Index 2022 for McLean, Oliver, and Sheridan Counties, ND



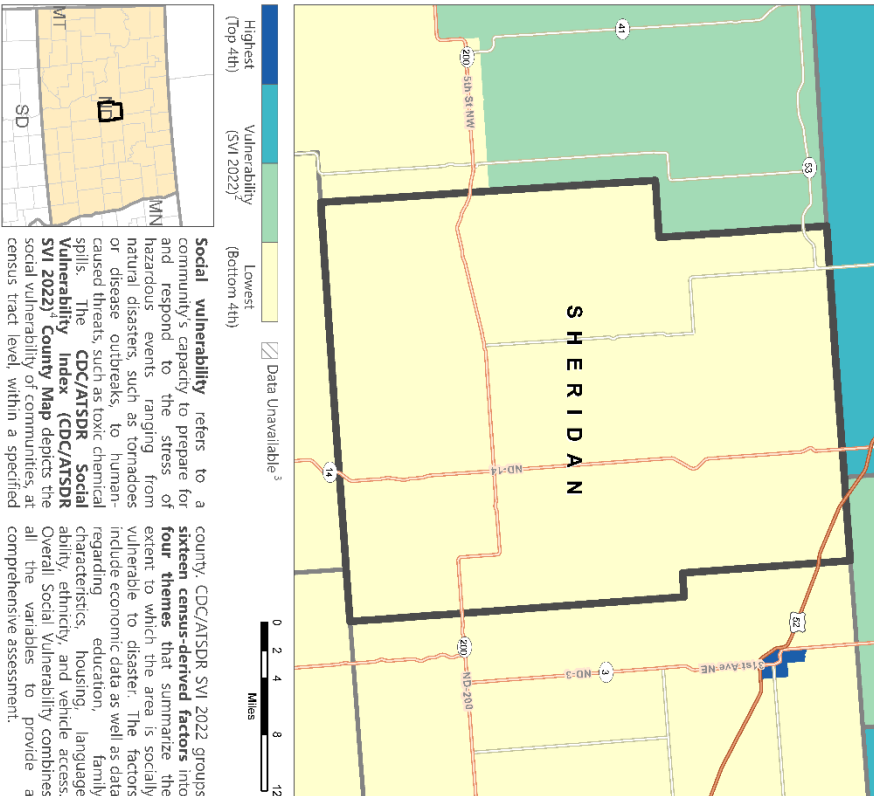
## CDC/ATSDR SVI 2022 – OLIVER COUNTY, NORTH DAKOTA



## CDC/ATSDR Social Vulnerability Index 2022

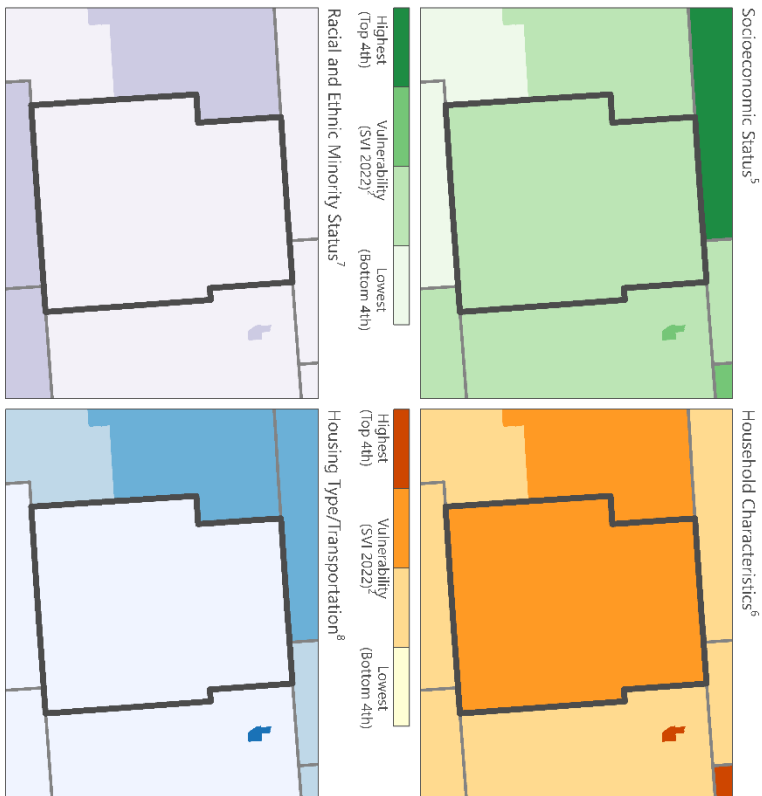
### SHERIDAN COUNTY, NORTH DAKOTA

#### Overall Social Vulnerability<sup>1</sup>



## CDC/ATSDR SVI 2022 – SHERIDAN COUNTY, NORTH DAKOTA

#### CDC/ATSDR SVI Themes



<sup>1</sup> **Data Source:** CDC/ATSDR/GRASP, U.S. Census Bureau, ARCIS StreetMap Premium.

<sup>2</sup> **Note:** Overall Social Vulnerability is a variable. One or more variables unavailable at census tract level. The CDC/ATSDR SVI combines percentile rankings of U.S. Census Bureau's Community Survey (ACS) 2010 health variables. The social vulnerability index (SVI) is a composite of 15 variables, including: poverty, minority status, household crowding, lack of vehicle access, and other factors. The SVI is a composite of 15 variables, including: poverty, minority status, household crowding, lack of vehicle access, and other factors. The SVI is a composite of 15 variables, including: poverty, minority status, household crowding, lack of vehicle access, and other factors.

<sup>3</sup> **Projection:** NAD 1983 Albers Equal Area Projection. **Units:** Meters. **Scale:** 1:100,000. **Source:** CDC/ATSDR SVI web page: <https://www.atsdr.cdc.gov/health/health/index.html>

## Appendix B: Secondary Data Tables for Oliver County

**Table B1: Population Estimates, Oliver County, ND, North Dakota, and United States, by Age, Race/Ethnicity, and Sex (2022)**

Age Group	Oliver County Population	Oliver County Percentages	North Dakota Percentages	United States Percentages
0-4	128	7.0%	6.7%	5.7%
5-17	343	18.7%	16.9%	16.4%
18-24	76	4.1%	11.3%	9.4%
25-44	321	17.5%	27.1%	26.6%
45-64	506	27.6%	22.2%	25.3%
65 and older	458	25.0%	15.9%	16.5%
<b>Total</b>	<b>1,832</b>	<b>100.0%</b>	<b>100.0%</b>	<b>100.0%</b>
<b>Race and Ethnicity*</b>				
White, non-Hispanic alone	1,683	91.9%	83.0%	58.9%
American Indian and Alaska Native alone	8	0.4%	4.7%	0.8%
Asian alone	6	0.3%	1.6%	5.8%
Black or African American alone	0	0.0%	3.2%	12.5%
Native Hawaiian and Pacific Islander alone	7	0.4%	0.2%	0.2%
Some other race alone	0	0.0%	1.4%	6.0%
Two or more races	128	7.0%	4.4%	8.8%
Hispanic Origin (of any race)	61	3.3%	4.3%	18.7%
<b>Sex</b>				
Female	859	46.9%	48.6%	50.4%
Male	973	53.1%	51.4%	49.6%
<b>Total</b>	<b>1,832</b>	<b>100.0%</b>	<b>100.0%</b>	<b>100.0%</b>

\*Overlapping racial/ethnic categories mean that the percentages will not total to 100% of the population.  
Source: U.S. Census Bureau, 2018-2022 American Community Survey (ACS) 5-year estimates.

**Table B2: Household Demographics, Oliver County, ND, North Dakota, and United States (2022)**

Item	Oliver County	North Dakota	United States
Total households	698	320,038	125,736,353
Owner-occupied housing rate	87.4%	63.2%	64.8%
Average household size (persons per household)	2.6	2.3	2.6
Median value of owned-occupied housing	\$226,900	\$232,500	\$281,900
Median monthly owner costs (with mortgage)	\$1,683	\$1,653	\$1,828
Median monthly owner costs (no mortgage)	\$604	\$551	\$584
Median gross rent	\$594	\$912	\$1,268
Median household income	\$69,722	\$73,959	\$75,149

Source: U.S. Census Bureau, 2018-2022 American Community Survey (ACS) 5-year estimates.

**Table B3: Household Characteristics, Oliver County, ND, North Dakota, and United States (2022)**

Household Characteristics	Oliver County Households	Percent of Oliver County Households*	Percent of North Dakota Households*	Percent of United States Households*
Households with children aged 0-17	211	30.2%	27.8%	30.2%
Households with adults aged 65+	299	42.8%	26.7%	30.8%
Householders living alone	122	17.5%	33.2%	28.3%
Householders aged 65+ living alone	66	9.5%	11.8%	11.5%

\*Overlapping household characteristics mean that the percentages of households will not total to 100% of the total number of households. Source: U.S. Census Bureau, 2018-2022 American Community Survey (ACS) 5-year estimates.

**Table B4: Employment by Industry, Oliver County, ND (2022)**

Sector	Estimated Workers	Percent of Workforce
Agriculture, forestry, fishing, hunting and mining	146	18.7%
Educational services, Health care and social assistance	131	16.8%
Transportation, warehousing, and utilities	97	12.4%
Retail	58	7.4%
Construction	52	6.7%
Professional, scientific, technical, administrative, and waste management service	51	6.5%
Arts, entertainment, recreation, accommodation and food service	50	6.4%
Manufacturing	49	6.3%
Public administration	39	5.0%
Other	107	13.7%
<b>Total workforce</b>	<b>780</b>	<b>100.0%</b>

Source: U.S. Census Bureau, 2018-2022 American Community Survey (ACS) 5-year estimates.

**Table B5: Poverty Characteristics, Oliver County, ND, North Dakota, and United States (2022)**

Poverty Characteristics	Oliver County Estimate	Oliver County Percent*	North Dakota Percent*	United States Percent*
All persons below poverty level (% of total population)	211	11.5%	10.8%	12.5%
All persons below 200% poverty level (% of total population)	526	28.7%	24.7%	28.8%
Children aged 0-17 below poverty level (% of children 0-17)	78	16.6%	11.3%	16.7%
Adults aged 65 and older below poverty level (% of adults 65 and older)	64	14%	9.1%	10.0%
Eligible recipients of free or reduced-price school lunch	61	23.8%	23.2%	50.8%

\*Differing populations and overlapping categories mean that percentages will not total to 100%. Sources: U.S. Census Bureau, 2018-2022 American Community Survey (ACS) 5-year estimates; 2024 County Health Rankings & Roadmaps, a program of the University of Wisconsin Population Health Institute

**Table B6: Educational Attainment for Persons Aged 25 and Older, Oliver County, ND, North Dakota, and United States (2022)**

Level of Education Attained	Oliver County Estimate	Oliver County Percent of Population 25 and Older	North Dakota Percent of Population 25 and Older	United States Percent of Population 25 and Older
Less than high school	69	5.4%	6.5%	10.9%
High school diploma or GED	397	30.9%	26.1%	26.4%
Some college or Associate's degree	541	42.1%	36.0%	28.5%
Bachelor's degree	206	16%	22.3%	20.9%
Graduate or professional degree	72	5.6%	9.1%	13.4%
<i>Total population aged 25 and older</i>	<i>1,285</i>	<i>100.0%</i>	<i>100.0%</i>	<i>100.0%</i>

Source: U.S. Census Bureau, 2018-2022 American Community Survey (ACS) 5-year estimates.

**Table B7: Health Behaviors, Oliver County, ND, North Dakota, and the United States (2021)**

Health Behavior	Oliver County	North Dakota	United States
Adult Smoking	17%	16%	15%
Adult Obesity	37%	36%	34%
Adult Excessive Drinking	20%	23%	18%
Alcohol-Impaired Driving Deaths	75%	39%	26%
Physical Inactivity <sup>1</sup>	25%	25%	23%
Access to Exercise Opportunities <sup>2</sup>	45%	76%	84%
Poor Mental Health Days <sup>3</sup>	3.9	4.0	4.8

Source: 2024 County Health Rankings & Roadmaps, a program of the University of Wisconsin Population Health Institute.

<sup>1</sup>Physical Inactivity refers to the percent of adults who report participating in no physical activity outside of work.

<sup>2</sup>Access to Exercise Opportunities refers to the percent of adults who report living close to a park or recreation facility.

<sup>3</sup>The average number of self-reported mentally unhealthy days in the past 30 days.

**Table B8:** Due to Oliver County's small population, no reliable Cause of Death data exists.

**Table B9: Other Health Factors, Oliver County, ND, North Dakota, and United States**

Description of Factor	Oliver County	North Dakota	United States
Uninsured Rate, 2021	8%	9%	10%
Medicaid Coverage, 2022	9.3%	11.9%	20.4%
Unemployment Rate, 2022	3.3%	2.1%	3.7%
Low Birthweight Rate, 2016-2022	-	7%	8%
Annual Mammogram Rate, 2021 <sup>1</sup>	60%	53%	43%
Annual Flu Shot Rate, 2021 <sup>2</sup>	31%	49%	46%
Food Environment Index, 2019-2021 <sup>3</sup>	7.8	9.1	7.7

Sources: US Census Bureau's Small Area Health Insurance Estimates (SAHIE) program, 2021; The Local Area Unemployment Statistics (LAUS) program of the Bureau of Labor Statistics, 2022; Map the Meal Gap, Feeding America, 2021; The Centers for Medicare & Medicaid Services Office of Minority Health's Mapping Medicare Disparities (MMD) Tool, 2021

<sup>1</sup>Percentage of female Medicare enrollees who received an annual mammogram.

<sup>2</sup>Percent of Medicare enrollees who received an annual flu shot.

<sup>3</sup>The Food Environment Index is a measure of food environment that combines food insecurity rates with rates of access to healthy foods. It is scored on a scale from 0 (worst) to 10 (best).

**Table B10: Number of Residents Per Health Care Provider in Oliver County, ND, North Dakota, and the United States**

Type of Provider	Oliver County	North Dakota	United States
Primary Care Physicians, 2021	1,870:0	1,290:1	1,330:1
Mental Health Care Providers, 2024	-	450:1	320:1
Dentists, 2022	1,860:0	1,420:1	1,360:1

Sources: Health Resources & Services Administration, Area Health Resource Files; CMS, National Provider Identification Registry.

**Table B11: National Risk Index Percentiles for Oliver County, ND when compared to North Dakota Counties and U.S. Counties (2024)**

Index	Percentile within North Dakota	U.S. Percentile
Expected Annual Loss	17.0	9.2
Social Vulnerability	64.2	20.9
Community Resilience	71.7	80.4
<i>National Risk Index</i>	<i>15.1</i>	<i>7.4</i>

Note: The Risk Index can be read as “15.1% of counties in North Dakota have a lower Risk Index than Oliver County; 7.4% of U.S. counties have a lower Risk Index than Oliver County.”

Sources: FEMA, National Risk Index; CDC/ATSDR Social Vulnerability Index 2022; University of South Carolina's Hazards and Vulnerability Research Institute (HVRI)'s Baseline Resilience Indicators for Communities (HVRI BRIC).



## Appendix C: Secondary Data Tables for Sheridan County

**Table C1: Population Estimates, Sheridan County, ND, North Dakota, and United States, by Age, Race/Ethnicity, and Sex (2022)**

Age Group	Sheridan County Population	Sheridan County Percentages	North Dakota Percentages	United States Percentages
0-4	51	3.8%	6.7%	5.7%
5-17	153	11.4%	16.9%	16.4%
18-24	80	6.0%	11.3%	9.4%
25-44	262	19.6%	27.1%	26.6%
45-64	344	25.7%	22.2%	25.3%
65 and older	448	33.5%	15.9%	16.5%
<b>Total</b>	<b>1,338</b>	<b>100.0%</b>	<b>100.0%</b>	<b>100.0%</b>
<b>Race and Ethnicity*</b>				
White, non-Hispanic alone	1,280	95.7%	83.0%	58.9%
American Indian and Alaska Native alone	18	1.3%	4.7%	0.8%
Asian alone	0	0.0%	1.6%	5.8%
Black or African American alone	0	0.0%	3.2%	12.5%
Native Hawaiian and Pacific Islander alone	0	0.0%	0.2%	0.2%
Some other race alone	0	0.0%	1.4%	6.0%
Two or more races	38	2.8%	4.4%	8.8%
Hispanic Origin (of any race)	6	0.4%	4.3%	18.7%
<b>Sex</b>				
Female	656	49.0%	48.6%	50.4%
Male	682	51.0%	51.4%	49.6%
<b>Total</b>	<b>1,338</b>	<b>100.0%</b>	<b>100.0%</b>	<b>100.0%</b>

\*Overlapping racial/ethnic categories mean that the percentages will not total to 100% of the population.  
Source: U.S. Census Bureau, 2018-2022 American Community Survey (ACS) 5-year estimates.

**Table C2: Household Demographics, Sheridan County, ND, North Dakota, and United States (2022)**

Item	Sheridan County	North Dakota	United States
Total households	644	320,038	125,736,353
Owner-occupied housing rate	82.9%	63.2%	64.8%
Average household size (persons per household)	2.1	2.3	2.6
Median value of owned-occupied housing	\$108,500	\$232,500	\$281,900
Median monthly owner costs (with mortgage)	\$1,477	\$1,653	\$1,828
Median monthly owner costs (without mortgage)	\$455	\$551	\$584
Median gross rent	\$439	\$912	\$1,268
Median household income	\$68,684	\$73,959	\$75,149

Source: U.S. Census Bureau, 2018-2022 American Community Survey (ACS) 5-year estimates.

**Table C3: Household Characteristics, Sheridan County, ND, North Dakota, and United States (2022)**

Household Characteristics	Sheridan County Households	Percent of Sheridan County Households*	Percent of North Dakota Households*	Percent of United States Households*
Households with children aged 0-17	105	16.3%	27.8%	30.2%
Households with adults aged 65 and older	327	50.8%	26.7%	30.8%
Householders living alone	234	36.3%	33.2%	28.3%
Householders aged 65 and older living alone	149	23.1%	11.8%	11.5%

\*Overlapping household characteristics mean that the percentages of households will not total to 100% of the total number of households. Source: U.S. Census Bureau, 2018-2022 American Community Survey (ACS) 5-year estimates.

**Table C4: Employment by Industry, Sheridan County, ND (2022)**

Sector	Estimated Workers	Percent of Workforce
Agriculture, forestry, fishing, hunting and mining	172	27.3%
Educational services, Health care and social assistance	115	18.3%
Construction	96	15.3%
Retail	51	8.1%
Transportation and warehousing, and utilities	37	5.9%
Arts, entertainment, recreation, accommodation and food service	36	5.7%
Other	122	19.4%
<b>Total workforce</b>	<b>629</b>	<b>100.0%</b>

Source: U.S. Census Bureau, 2018-2022 American Community Survey (ACS) 5-year estimates.

**Table C5: Poverty Characteristics, Sheridan County, ND, North Dakota, and United States (2022)**

Poverty Characteristics	Sheridan County Estimate	Sheridan County Percent*	North Dakota Percent*	United States Percent*
All persons below poverty level (% of total population)	92	6.9%	10.8%	12.5%
All persons below 200% of poverty (% of total population)	300	22.6%	24.7%	28.8%
Children aged 0-17 below poverty (% of children 0-17)	9	4.6%	11.3%	16.7%
Adults aged 65 and older below poverty level (% of adults 65 and older)	31	6.9%	9.1%	10.0%
Eligible recipients of free or reduced-price school lunch	40	35.7%	23.2%	50.8%

\*Differing populations and overlapping categories mean that percentages will not total to 100%. Sources: U.S. Census Bureau, 2018-2022 American Community Survey (ACS) 5-year estimates; 2024 County Health Rankings & Roadmaps, a program of the University of Wisconsin Population Health Institute

**Table C6: Educational Attainment for Persons Aged 25 and Older, Sheridan County, ND, North Dakota, and United States (2022)**

Level of Education Attained	Sheridan County Estimate	Sheridan County Percent of Population 25 and Older	North Dakota Percent of Population 25 and Older	United States Percent of Population 25 and Older
Less than high school	101	9.6%	6.5%	10.9%
High school diploma or GED	421	39.9%	26.1%	26.4%
Some college or Associate's degree	381	36.1%	36.0%	28.5%
Bachelor's degree	143	13.6%	22.3%	20.9%
Graduate or professional degree	8	0.8%	9.1%	13.4%
<i>Total population aged 25 and older</i>	<i>1,054</i>	<i>100.0%</i>	<i>100.0%</i>	<i>100.0%</i>

Source: U.S. Census Bureau, 2018-2022 American Community Survey (ACS) 5-year estimates.

**Table C7: Health Behaviors, Sheridan County, ND, North Dakota, and the United States (2021)**

Health Behavior	Sheridan County	North Dakota	United States
Adult Smoking	18%	16%	15%
Adult Obesity	36%	36%	34%
Adult Excessive Drinking	17%	23%	18%
Alcohol-Impaired Driving Deaths	0%	39%	26%
Physical Inactivity <sup>1</sup>	26%	25%	23%
Access to Exercise Opportunities <sup>2</sup>	38%	76%	84%
Poor Mental Health Days <sup>3</sup>	3.9	4.0	4.8

Source: 2024 County Health Rankings & Roadmaps, a program of the University of Wisconsin Population Health Institute.

<sup>1</sup>Physical Inactivity refers to the percent of adults who report participating in no physical activity outside of work.

<sup>2</sup>Access to Exercise Opportunities refers to the percent of adults who report living close to a park or recreation facility.

<sup>3</sup>The average number of self-reported mentally unhealthy days in the past 30 days.

**Table C8:** Due to Sheridan County's small population, no reliable Cause of Death data exist.

**Table C9: Other Health Factors, Sheridan County, ND, North Dakota, and United States**

Description of Factor	Sheridan County	North Dakota	United States
Uninsured Rate, 2021	13%	9%	10%
Medicaid Coverage, 2022	12.3%	11.9%	20.4%
Unemployment Rate, 2022	2.6%	2.1%	3.7%
Low Birthweight Rate, 2016-2022	-	7%	8%
Annual Mammogram Rate, 2021 <sup>1</sup>	44%	53%	43%
Annual Flu Shot Rate, 2021 <sup>2</sup>	42%	49%	46%
Food Environment Index, 2019-2021 <sup>3</sup>	7.1	9.1	7.7

Sources: US Census Bureau's Small Area Health Insurance Estimates (SAHIE) program, 2021; The Local Area Unemployment Statistics (LAUS) program of the Bureau of Labor Statistics, 2022; Map the Meal Gap, Feeding America, 2021; The Centers for Medicare & Medicaid Services Office of Minority Health's Mapping Medicare Disparities (MMD) Tool, 2021; NDHHS COVID-19 Vaccine Dashboard; CDC COVIDVaxView

<sup>1</sup>Percentage of female Medicare enrollees who received an annual mammogram.

<sup>2</sup>Percent of Medicare enrollees who received an annual flu shot.

<sup>3</sup>The Food Environment Index is a measure of food environment that combines food insecurity rates with rates of access to healthy foods. It is scored on a scale from 0 (worst) to 10 (best).

**Table C10: Number of Residents Per Health Care Provider in Sheridan County, ND, North Dakota, and the United States**

Type of Provider	Sheridan County	North Dakota	United States
Primary Care Physicians, 2021	1,270:0	1,290:1	1,330:1
Mental Health Care Providers, 2024	-	450:1	320:1
Dentists, 2022	1,300:0	1,420:1	1,360:1

Sources: Health Resources & Services Administration, Area Health Resource Files; CMS, National Provider Identification Registry.

**Table C11: National Risk Index Percentiles for Sheridan County, ND when compared to North Dakota Counties and U.S. Counties (2024)**

Index	Percentile within North Dakota	U.S. Percentile
Expected Annual Loss	52.8	31.2
Social Vulnerability	13.2	3.3
Community Resilience	24.5	41.7
<i>National Risk Index</i>	<i>47.2</i>	<i>21.9</i>

Note: The Risk Index can be read as "47.2% of counties in North Dakota have a lower Risk Index than Sheridan County; 21.9% of U.S. counties have a lower Risk Index than Sheridan County."

Sources: FEMA, National Risk Index; CDC/ATSDR Social Vulnerability Index 2022; University of South Carolina's Hazards and Vulnerability Research Institute (HVRI)'s Baseline Resilience Indicators for Communities (HVRI BRIC).

## Appendix D: Survey Instrument

*Please note: the instrument below has been formatted to allow for mail completion and may look slightly different than presented online. The questions are the same.*

# COMMUNITY HEALTH NEEDS ASSESSMENT 2024

---

Every three years, we conduct a Community Health Needs Assessment (CHNA) to better understand health and well-being at individual and community levels. This survey will ask you a few questions about the challenges in your community, and how you think they should be approached. It will also ask a few questions about you, so we can understand more about your individual experiences as they relate to your health and well-being. There are no wrong answers to these questions, and your answers are anonymous. Your name will not be on any reports, and your answers will be grouped with those from other people who respond.

This survey will take about 10 minutes to complete. Your participation is voluntary. If you do not want to participate at all, or if you do not want to answer a particular question, that's okay. If you choose to do the survey, your answers will be kept anonymous and confidential and will be used only to answer questions related to the purpose of this study. What we learn from the survey will be used to plan communication strategies to help people in your community.

You have the option to include your email address in a gift card prize draw! Simply complete the survey, include your email address at the end, and return the survey to us for your chance to win!

*Your contact information will not be used for any other purpose than the prize draw. It will not be used in analysis or reporting.*

If you have any trouble with any question, please refer to the following resources:

### Center for Social Research

Nancy Hodur	nancy.hodur@ndsu.edu	(701) 231-8621
-------------	----------------------	----------------

Kaeleigh Schroeder	kaeleigh.schroeder@ndsu.edu
--------------------	-----------------------------

Avi Slone	avram.slone@ndsu.edu
-----------	----------------------

### CommonSpirit Healthy Communities liaison

Ashley Carroll	ashley.carroll@commonspirit.org
----------------	---------------------------------

---

***Completing the survey means that you give your consent to participate in this Community Health Needs Assessment.***

---

**What is your zip code?**

---

**What is the state where you live?**

---

**What is the county where you live?**

---

**Please indicate your level of agreement for each of the following statements about the people in your community.**

	<b>Strongly Disagree</b>	<b>Somewhat Disagree</b>	<b>Neither Agree nor Disagree</b>	<b>Somewhat Agree</b>	<b>Strongly Agree</b>	<b>I don't know</b>
<b>My community is culturally diverse</b>	<input type="checkbox"/>	<input type="checkbox"/>	<input type="checkbox"/>	<input type="checkbox"/>	<input type="checkbox"/>	<input type="checkbox"/>
<b>People feel welcome and accepted in my community</b>	<input type="checkbox"/>	<input type="checkbox"/>	<input type="checkbox"/>	<input type="checkbox"/>	<input type="checkbox"/>	<input type="checkbox"/>
<b>There is a sense of civic responsibility and engagement in my community</b>	<input type="checkbox"/>	<input type="checkbox"/>	<input type="checkbox"/>	<input type="checkbox"/>	<input type="checkbox"/>	<input type="checkbox"/>
<b>The people in my community have a shared vision and community goals</b>	<input type="checkbox"/>	<input type="checkbox"/>	<input type="checkbox"/>	<input type="checkbox"/>	<input type="checkbox"/>	<input type="checkbox"/>

**Is there anything you would like to add about the people in your community?**

---



---



---



Please indicate your level of agreement for each of the following statements about services in your community.

	Strongly Disagree	Somewhat Disagree	Neither Agree nor Disagree	Somewhat Agree	Strongly Agree	I don't know
My community has adequate opportunities for recreation and leisure for all ages	<input type="checkbox"/>	<input type="checkbox"/>	<input type="checkbox"/>	<input type="checkbox"/>	<input type="checkbox"/>	<input type="checkbox"/>
My community has a thriving business district with access to needed goods and services	<input type="checkbox"/>	<input type="checkbox"/>	<input type="checkbox"/>	<input type="checkbox"/>	<input type="checkbox"/>	<input type="checkbox"/>
My community provides adequate public services like snow removal, garbage collection, or recycling	<input type="checkbox"/>	<input type="checkbox"/>	<input type="checkbox"/>	<input type="checkbox"/>	<input type="checkbox"/>	<input type="checkbox"/>
My community has adequate child care services	<input type="checkbox"/>	<input type="checkbox"/>	<input type="checkbox"/>	<input type="checkbox"/>	<input type="checkbox"/>	<input type="checkbox"/>
My community has adequate senior services	<input type="checkbox"/>	<input type="checkbox"/>	<input type="checkbox"/>	<input type="checkbox"/>	<input type="checkbox"/>	<input type="checkbox"/>
My community has a quality education system	<input type="checkbox"/>	<input type="checkbox"/>	<input type="checkbox"/>	<input type="checkbox"/>	<input type="checkbox"/>	<input type="checkbox"/>
My community has adequate public transportation services	<input type="checkbox"/>	<input type="checkbox"/>	<input type="checkbox"/>	<input type="checkbox"/>	<input type="checkbox"/>	<input type="checkbox"/>
My community has adequate employment opportunities that pay a livable wage	<input type="checkbox"/>	<input type="checkbox"/>	<input type="checkbox"/>	<input type="checkbox"/>	<input type="checkbox"/>	<input type="checkbox"/>
My community has adequate law enforcement.	<input type="checkbox"/>	<input type="checkbox"/>	<input type="checkbox"/>	<input type="checkbox"/>	<input type="checkbox"/>	<input type="checkbox"/>
My community has enough affordable housing for everyone who needs it	<input type="checkbox"/>	<input type="checkbox"/>	<input type="checkbox"/>	<input type="checkbox"/>	<input type="checkbox"/>	<input type="checkbox"/>
My community has adequate access to healthy and affordable foods	<input type="checkbox"/>	<input type="checkbox"/>	<input type="checkbox"/>	<input type="checkbox"/>	<input type="checkbox"/>	<input type="checkbox"/>

Is there anything you would like to add about services in your community?

---



---



---

How concerned are you about each of the following in your community?

	Not concerned at all	Slightly concerned	Somewhat concerned	Very concerned	I don't know	Not applicable to my community
Substance misuse (alcohol, prescription drugs, tobacco or vaping, illicit or street drugs)	<input type="checkbox"/>	<input type="checkbox"/>	<input type="checkbox"/>	<input type="checkbox"/>	<input type="checkbox"/>	<input type="checkbox"/>
Mental health (anxiety, stress, depression)	<input type="checkbox"/>	<input type="checkbox"/>	<input type="checkbox"/>	<input type="checkbox"/>	<input type="checkbox"/>	<input type="checkbox"/>
Suicide	<input type="checkbox"/>	<input type="checkbox"/>	<input type="checkbox"/>	<input type="checkbox"/>	<input type="checkbox"/>	<input type="checkbox"/>
Access to healthy foods	<input type="checkbox"/>	<input type="checkbox"/>	<input type="checkbox"/>	<input type="checkbox"/>	<input type="checkbox"/>	<input type="checkbox"/>
Food insecurity, hunger	<input type="checkbox"/>	<input type="checkbox"/>	<input type="checkbox"/>	<input type="checkbox"/>	<input type="checkbox"/>	<input type="checkbox"/>
Poverty in my community	<input type="checkbox"/>	<input type="checkbox"/>	<input type="checkbox"/>	<input type="checkbox"/>	<input type="checkbox"/>	<input type="checkbox"/>
Sexually transmitted diseases	<input type="checkbox"/>	<input type="checkbox"/>	<input type="checkbox"/>	<input type="checkbox"/>	<input type="checkbox"/>	<input type="checkbox"/>
Crime in my community	<input type="checkbox"/>	<input type="checkbox"/>	<input type="checkbox"/>	<input type="checkbox"/>	<input type="checkbox"/>	<input type="checkbox"/>
Availability of long-term care or assisted living facilities	<input type="checkbox"/>	<input type="checkbox"/>	<input type="checkbox"/>	<input type="checkbox"/>	<input type="checkbox"/>	<input type="checkbox"/>
Availability of elder care services to support independent living, or aging in place	<input type="checkbox"/>	<input type="checkbox"/>	<input type="checkbox"/>	<input type="checkbox"/>	<input type="checkbox"/>	<input type="checkbox"/>
Obesity or overweightness	<input type="checkbox"/>	<input type="checkbox"/>	<input type="checkbox"/>	<input type="checkbox"/>	<input type="checkbox"/>	<input type="checkbox"/>
Negative effects of social media	<input type="checkbox"/>	<input type="checkbox"/>	<input type="checkbox"/>	<input type="checkbox"/>	<input type="checkbox"/>	<input type="checkbox"/>

Are there other issues in your community that you are concerned about?

---



---



---

How concerned are you about the following types of violence in your community?

	Not concerned at all	Slightly concerned	Somewhat concerned	Very concerned	I don't know	Not applicable to my community
Cyber bullying	<input type="checkbox"/>	<input type="checkbox"/>	<input type="checkbox"/>	<input type="checkbox"/>	<input type="checkbox"/>	<input type="checkbox"/>
Child abuse or neglect	<input type="checkbox"/>	<input type="checkbox"/>	<input type="checkbox"/>	<input type="checkbox"/>	<input type="checkbox"/>	<input type="checkbox"/>
Intimate partner violence	<input type="checkbox"/>	<input type="checkbox"/>	<input type="checkbox"/>	<input type="checkbox"/>	<input type="checkbox"/>	<input type="checkbox"/>
Emotional abuse (including: intimidation, isolation, verbal threats, economic abuse/withholding funds)	<input type="checkbox"/>	<input type="checkbox"/>	<input type="checkbox"/>	<input type="checkbox"/>	<input type="checkbox"/>	<input type="checkbox"/>
Sexual abuse or assault	<input type="checkbox"/>	<input type="checkbox"/>	<input type="checkbox"/>	<input type="checkbox"/>	<input type="checkbox"/>	<input type="checkbox"/>
Stalking	<input type="checkbox"/>	<input type="checkbox"/>	<input type="checkbox"/>	<input type="checkbox"/>	<input type="checkbox"/>	<input type="checkbox"/>
Verbal threats or harassment	<input type="checkbox"/>	<input type="checkbox"/>	<input type="checkbox"/>	<input type="checkbox"/>	<input type="checkbox"/>	<input type="checkbox"/>
Gun violence	<input type="checkbox"/>	<input type="checkbox"/>	<input type="checkbox"/>	<input type="checkbox"/>	<input type="checkbox"/>	<input type="checkbox"/>

Are there other types of violence in your community that you are concerned about?

---



---



---

Please indicate your level of agreement with the following issues related to medical services in your community.

	Strongly Disagree	Somewhat Disagree	Neither Agree nor Disagree	Somewhat Agree	Strongly Agree	I don't know
It is easy to get an appointment for health care services in my community	<input type="checkbox"/>	<input type="checkbox"/>	<input type="checkbox"/>	<input type="checkbox"/>	<input type="checkbox"/>	<input type="checkbox"/>
My community has adequate primary care providers and nurses	<input type="checkbox"/>	<input type="checkbox"/>	<input type="checkbox"/>	<input type="checkbox"/>	<input type="checkbox"/>	<input type="checkbox"/>
My community has adequate health care services to meet my health care needs	<input type="checkbox"/>	<input type="checkbox"/>	<input type="checkbox"/>	<input type="checkbox"/>	<input type="checkbox"/>	<input type="checkbox"/>
My community has adequate dental care providers	<input type="checkbox"/>	<input type="checkbox"/>	<input type="checkbox"/>	<input type="checkbox"/>	<input type="checkbox"/>	<input type="checkbox"/>
My community has adequate vision care providers	<input type="checkbox"/>	<input type="checkbox"/>	<input type="checkbox"/>	<input type="checkbox"/>	<input type="checkbox"/>	<input type="checkbox"/>
My community has adequate mental health services	<input type="checkbox"/>	<input type="checkbox"/>	<input type="checkbox"/>	<input type="checkbox"/>	<input type="checkbox"/>	<input type="checkbox"/>
My community has adequate access to emergency response services such as ambulance or fire fighters	<input type="checkbox"/>	<input type="checkbox"/>	<input type="checkbox"/>	<input type="checkbox"/>	<input type="checkbox"/>	<input type="checkbox"/>
I can easily navigate the health care system in my community	<input type="checkbox"/>	<input type="checkbox"/>	<input type="checkbox"/>	<input type="checkbox"/>	<input type="checkbox"/>	<input type="checkbox"/>
I receive quality health care in my community	<input type="checkbox"/>	<input type="checkbox"/>	<input type="checkbox"/>	<input type="checkbox"/>	<input type="checkbox"/>	<input type="checkbox"/>
In my community, care is well-coordinated across providers and services	<input type="checkbox"/>	<input type="checkbox"/>	<input type="checkbox"/>	<input type="checkbox"/>	<input type="checkbox"/>	<input type="checkbox"/>

Do you have any other concerns about access to health care services in your community?

---



---



---

**Which preventative health care measures have you received in the last year? Select all that apply.**

- |  |   |
|--|---|
| <input type="checkbox"/> Vaccinations                            | <input type="checkbox"/> Counseling for tobacco use, alcohol use, weight loss, or behavioral health |
| <input type="checkbox"/> Annual physical exam                    | <input type="checkbox"/> Depression screening   |
| <input type="checkbox"/> Mammogram                               | <input type="checkbox"/> STD/STI screening  |
| <input type="checkbox"/> Colonoscopy                             | <input type="checkbox"/> Vision exam  |
| <input type="checkbox"/> Blood pressure or cholesterol screening | <input type="checkbox"/> Dental exam/annual checkup   |

**To what degree are each of the following a barrier to your ability to access health care services?**

	Not at all a barrier	Somewhat of a barrier	Extreme barrier	I don't know
Transportation to health services locations	<input type="checkbox"/>	<input type="checkbox"/>	<input type="checkbox"/>	<input type="checkbox"/>
Availability of local services to meet my health care needs	<input type="checkbox"/>	<input type="checkbox"/>	<input type="checkbox"/>	<input type="checkbox"/>
Ability to see the same provider over time	<input type="checkbox"/>	<input type="checkbox"/>	<input type="checkbox"/>	<input type="checkbox"/>
Scheduling health care services within clinic hours	<input type="checkbox"/>	<input type="checkbox"/>	<input type="checkbox"/>	<input type="checkbox"/>
The price of prescription drugs, even with insurance	<input type="checkbox"/>	<input type="checkbox"/>	<input type="checkbox"/>	<input type="checkbox"/>
The price of health care services (such as co-payments or deductibles), even with health insurance	<input type="checkbox"/>	<input type="checkbox"/>	<input type="checkbox"/>	<input type="checkbox"/>
Communication or language barriers	<input type="checkbox"/>	<input type="checkbox"/>	<input type="checkbox"/>	<input type="checkbox"/>
Difficulty using or accessing technology to communicate with provider or system	<input type="checkbox"/>	<input type="checkbox"/>	<input type="checkbox"/>	<input type="checkbox"/>
Concerns about confidentiality	<input type="checkbox"/>	<input type="checkbox"/>	<input type="checkbox"/>	<input type="checkbox"/>
Disability accommodations	<input type="checkbox"/>	<input type="checkbox"/>	<input type="checkbox"/>	<input type="checkbox"/>
Health insurance coverage	<input type="checkbox"/>	<input type="checkbox"/>	<input type="checkbox"/>	<input type="checkbox"/>
The length of time to see a provider, from making an appointment to attending the appointment	<input type="checkbox"/>	<input type="checkbox"/>	<input type="checkbox"/>	<input type="checkbox"/>
Distance to access care	<input type="checkbox"/>	<input type="checkbox"/>	<input type="checkbox"/>	<input type="checkbox"/>

**Are there other barriers to your ability to access health care in your community?**

---



---



---

**Do you currently have a primary care doctor?**

- ☐ Yes
- ☐ No
- ☐ Prefer not to respond

**Where do you find out about health information? Select all that apply.**

- |  |   |
|--|---|
| <input type="checkbox"/> Primary care provider               | <input type="checkbox"/> My employer                  |
| <input type="checkbox"/> Other health care providers         | <input type="checkbox"/> Newspaper                    |
| <input type="checkbox"/> Public health professionals         | <input type="checkbox"/> Radio                        |
| <input type="checkbox"/> Internet sources                    | <input type="checkbox"/> Other (please specify _____) |
| <input type="checkbox"/> Word of mouth                       |   |
| <input type="checkbox"/> Advertising, such as TV commercials |   |

**What type of health insurance coverage do you currently have? Select all that apply.**

- ☐ Commercial private health insurance (coverage purchased by you or your employer)
- ☐ Medicare
- ☐ Medicaid etc.)
- ☐ Indian Health Service (IHS)
- ☐ Military (Tricare, Champus, VA)
- ☐ Other (please specify) \_\_\_\_\_
- ☐ No health insurance (**GO TO Q3.7**)
- ☐ Prefer not to say

**Why do you NOT have health insurance? Select all that apply.**

**DO NOT RESPOND IF YOU DO HAVE HEALTH INSURANCE**

- ☐ Too expensive
- ☐ Too difficult or complex to obtain health insurance
- ☐ I have a pre-existing condition that is not covered
- ☐ I am healthy and do not need insurance
- ☐ I do not qualify for Medicaid
- ☐ I was disenrolled from Medicaid
- ☐ Another reason (please specify) \_\_\_\_\_
- ☐ Prefer not to say

**What specific health care services, if any, do you think should be added locally?**

---



---



---



**Did you move to your community in the past year?**

- ☐ Yes
- ☐ No (**GO TO Q4.3**)
- ☐ Prefer not to respond (**GO TO Q4.3**)

**How difficult was it to do the following?**

	Not difficult at all	Slightly difficult	Somewhat difficult	Very difficult	I don't know/I'm not sure	Not applicable to me
<b>Enroll children in school</b>	<input type="checkbox"/>	<input type="checkbox"/>	<input type="checkbox"/>	<input type="checkbox"/>	<input type="checkbox"/>	<input type="checkbox"/>
<b>Find housing</b>	<input type="checkbox"/>	<input type="checkbox"/>	<input type="checkbox"/>	<input type="checkbox"/>	<input type="checkbox"/>	<input type="checkbox"/>
<b>Find healthcare</b>	<input type="checkbox"/>	<input type="checkbox"/>	<input type="checkbox"/>	<input type="checkbox"/>	<input type="checkbox"/>	<input type="checkbox"/>
<b>Find a job</b>	<input type="checkbox"/>	<input type="checkbox"/>	<input type="checkbox"/>	<input type="checkbox"/>	<input type="checkbox"/>	<input type="checkbox"/>
<b>Find childcare</b>	<input type="checkbox"/>	<input type="checkbox"/>	<input type="checkbox"/>	<input type="checkbox"/>	<input type="checkbox"/>	<input type="checkbox"/>

**Have you experienced discrimination in the past 12 months?**

- ☐ Yes
- ☐ No (**GO TO Q4.6**)
- ☐ Prefer not to respond (**GO TO Q4.6**)

**In what area(s) have you experienced discrimination? Select all that apply.**

- ☐ Race
- ☐ Ethnicity
- ☐ Sex
- ☐ Gender identity
- ☐ Sexual orientation
- ☐ Age
- ☐ Weight
- ☐ Disability
- ☐ Religion
- ☐ Another area (specify: \_\_\_\_\_)
- ☐ Prefer not to say

**In which of the following situations did you experience discrimination? Select all that apply.**

- ☐ Applying for a job
- ☐ At a job, work or my place of employment
- ☐ Receiving medical care
- ☐ Looking for housing
- ☐ Applying for a credit card, bank loan, or mortgage
- ☐ Shopping at a store or eating at a restaurant
- ☐ Applying for social services or public assistance
- ☐ Interacting with the police
- ☐ Appearing in court
- ☐ Another area (specify) \_\_\_\_\_
- ☐ Prefer not to say

**How difficult is it for you to pay for heating, housing, or medical care?**

- ☐ Not difficult at all
- ☐ Slightly difficult
- ☐ Somewhat difficult
- ☐ Very difficult
- ☐ I don't know/I'm not sure

**In the last month, have you had to sleep outside, in a shelter, in your car, at a family member or friend's house, or in a place not meant for sleeping?**

- ☐ Yes
- ☐ No
- ☐ Prefer not to say

**What is your age?**

\_\_\_\_\_

**What is your gender?**

- ☐ Male
- ☐ Female
- ☐ Non-binary/third gender
- ☐ Other (please describe: \_\_\_\_\_)
- ☐ Prefer not to say

**Which one of these groups best represents your race? Select all that apply.**

- ☐ American Indian or Alaska Native
- ☐ Black or African American
- ☐ Asian
- ☐ Native Hawaiian or Pacific Islander
- ☐ Two or more races
- ☐ White
- ☐ Other (please describe: \_\_\_\_\_)

**Do you identify as Hispanic, Latine, or of Spanish origin?**

- ☐ Yes
- ☐ No
- ☐ Prefer not to say

**What is your estimated household income?**

- |  |  |
|--|--|
| <input type="checkbox"/> Less than \$15,000  | <input type="checkbox"/> \$75,000 - \$99,999   |
| <input type="checkbox"/> \$15,000 - \$24,999 | <input type="checkbox"/> \$100,000 - \$149,999 |
| <input type="checkbox"/> \$25,000 - \$49,999 | <input type="checkbox"/> \$150,000 and over    |
| <input type="checkbox"/> \$50,000 - \$74,999 | <input type="checkbox"/> Prefer not to say     |

**What is the highest level of education you have completed?**

- |   |  |
|---|--|
| <input type="checkbox"/> Less than 9th Grade                | <input type="checkbox"/> Associate's degree              |
| <input type="checkbox"/> 9th to 12th Grade, no diploma      | <input type="checkbox"/> Bachelor's degree               |
| <input type="checkbox"/> High school graduate or equivalent | <input type="checkbox"/> Graduate or professional degree |
| <input type="checkbox"/> Some college, no degree            | <input type="checkbox"/> Prefer not to say               |

**Which of these categories best describes your employment status?**

- |   |  |
|---|--|
| <input type="checkbox"/> Employed full time | <input type="checkbox"/> Student           |
| <input type="checkbox"/> Employed part time | <input type="checkbox"/> Disabled          |
| <input type="checkbox"/> Unemployed         | <input type="checkbox"/> Prefer not to say |
| <input type="checkbox"/> Retired            |  |

**What is your marital status?**

- ☐ Single
- ☐ Married or in a domestic partnership
- ☐ Divorced or separated
- ☐ Widowed
- ☐ Prefer not to say

**How many people live in your household? Use numbers only. If you live alone, put "1".**

---

**Do you have access to reliable internet in your home?**

- ☐ Yes
- ☐ No
- ☐ Prefer not to say

**How did you access this survey?**

- ☐ Hospital or public health website
- ☐ Hospital or public health social media page (e.g., Facebook)
- ☐ Hospital or public health employee directly
- ☐ Economic development website or social media
- ☐ Church bulletin
- ☐ Other website or social media page (please specify) \_\_\_\_\_
- ☐ Newsletter (please specify from where) \_\_\_\_\_
- ☐ Newspaper advertisement
- ☐ Word of mouth
- ☐ Direct email (please specify from where) \_\_\_\_\_
- ☐ Another way (please specify) \_\_\_\_\_

Please provide any additional comments you think we could use to improve the delivery of health care in your community. If you need more space, please attach additional paper.

---

---

---

---

---

---

---

---

---

---

---

---

If you would like to enter our prize drawing, please write your email address below!

---

---

***Thanks for completing our survey!***  
***We appreciate your time, and your responses will help inform***  
***health care decisions in your community.***

***If you entered your name to be included in our draw, we'll contact the winners BY***  
***EMAIL once the survey has closed. Good luck!***

---

## Appendix E: Survey Frequencies

Completing the survey means that you give your consent to participate in this Community Health Needs Assessment.					
		Frequency	Percent	Valid Percent	Cumulative Percent
Valid	I consent	42	100.0%	100.0%	100.0%

What is your zip code?					
		Frequency	Percent	Valid Percent	Cumulative Percent
Valid					
	58463	1	2.4%	2.4%	21.4%
	58531	1	2.4%	2.4%	23.8%
	58559	2	4.8%	4.8%	28.6%
	58565	1	2.4%	2.4%	31.0%
	58575	25	59.5%	59.5%	90.5%
	58577	2	4.8%	4.8%	95.2%
	58579	1	2.4%	2.4%	97.6%
	58778	1	2.4%	2.4%	100.0%
	Total	42	100.0%	100.0%	

What is the state in which you live?					
		Frequency	Percent	Valid Percent	Cumulative Percent
Valid	North Dakota	42	100.0%	100.0%	100.0%

What is the county where you live in North Dakota?					
		Frequency	Percent	Valid Percent	Cumulative Percent
Valid	McLean	41	97.6%	97.6%	97.6%
	Sheridan	1	2.4%	2.4%	100.0%
Total		42	100.0%	100.0%	

**People in Your Community**

		<b>Strongly disagree</b>	<b>Somewhat disagree</b>	<b>Neither agree nor disagree</b>	<b>Somewhat agree</b>	<b>Strongly agree</b>	<b>Total</b>
Please indicate your level of agreement for each of the following statements about the people in your community. - My community is culturally diverse	Count	3	13	10	11	3	40
	Row N %	7.5%	32.5%	25.0%	27.5%	7.5%	100.0%
Please indicate your level of agreement for each of the following statements about the people in your community. - People feel welcome and accepted in my community	Count	0	2	5	17	18	42
	Row N %	0.0%	4.8%	11.9%	40.5%	42.9%	100.0%
Please indicate your level of agreement for each of the following statements about the people in your community. - There is a sense of civic responsibility and engagement in my community	Count	0	4	5	11	22	42
	Row N %	0.0%	9.5%	11.9%	26.2%	52.4%	100.0%
Please indicate your level of agreement for each of the following statements about the people in your community. - The people in my community have a shared vision and community goals	Count	1	2	7	20	11	41
	Row N %	2.4%	4.9%	17.1%	48.8%	26.8%	100.0%

		<b>Disagree</b>	<b>Neither agree nor disagree</b>	<b>Agree</b>	<b>Total</b>
RECODE: People in your community - My community is culturally diverse	Count	16	10	14	40
	Row N %	40.0%	25.0%	35.0%	100.0%
RECODE: People in your community - People feel welcome and accepted in my community	Count	2	5	35	42
	Row N %	4.8%	11.9%	83.3%	100.0%
RECODE: People in your community - There is a sense of civic responsibility and engagement in my community	Count	4	5	33	42
	Row N %	9.5%	11.9%	78.6%	100.0%
RECODE: People in your community - The people in my community have a shared vision and community goals	Count	3	7	31	41
	Row N %	7.3%	17.1%	75.6%	100.0%



**Services in Your Community**

		<b>Strongly disagree</b>	<b>Somewhat disagree</b>	<b>Neither agree nor disagree</b>	<b>Somewhat agree</b>	<b>Strongly agree</b>	<b>Total</b>
Please indicate your level of agreement for each of the following statements about services in your community. - My community has adequate opportunities for recreation and leisure for all ages	Count	3	13	9	11	6	42
	Row N %	7.1%	31.0%	21.4%	26.2%	14.3%	100.0%
Please indicate your level of agreement for each of the following statements about services in your community. - My community has a thriving business district with access to needed goods and services	Count	4	8	6	20	4	42
	Row N %	9.5%	19.0%	14.3%	47.6%	9.5%	100.0%
Please indicate your level of agreement for each of the following statements about services in your community. - My community provides adequate public services like snow removal, garbage collection, or recycling	Count	1	6	5	15	15	42
	Row N %	2.4%	14.3%	11.9%	35.7%	35.7%	100.0%
Please indicate your level of agreement for each of the following statements about services in your community. - My community has adequate child care services	Count	13	17	6	3	2	41
	Row N %	31.7%	41.5%	14.6%	7.3%	4.9%	100.0%
Please indicate your level of agreement for each of the following statements about services in your community. - My community has adequate senior services	Count	5	8	10	16	2	41
	Row N %	12.2%	19.5%	24.4%	39.0%	4.9%	100.0%
Please indicate your level of agreement for each of the following statements about services in your community. - My community has a quality education system	Count	1	3	8	10	20	42
	Row N %	2.4%	7.1%	19.0%	23.8%	47.6%	100.0%
Please indicate your level of agreement for each of the following statements about services in your community. - My community has adequate public transportation services	Count	14	12	9	6	0	41
	Row N %	34.1%	29.3%	22.0%	14.6%	0.0%	100.0%
Please indicate your level of agreement for each of the following statements about services in your community. - My community has adequate employment opportunities that pay a livable wage	Count	3	16	6	12	4	41
	Row N %	7.3%	39.0%	14.6%	29.3%	9.8%	100.0%

		<b>Strongly disagree</b>	<b>Somewhat disagree</b>	<b>Neither agree nor disagree</b>	<b>Somewhat agree</b>	<b>Strongly agree</b>	<b>Total</b>
Please indicate your level of agreement for each of the following statements about services in your community. - My community has adequate law enforcement	Count	1	6	8	12	14	41
	Row N %	2.4%	14.6%	19.5%	29.3%	34.1%	100.0%
Please indicate your level of agreement for each of the following statements about services in your community. - My community has enough affordable housing for everyone who needs it	Count	5	12	7	12	5	41
	Row N %	12.2%	29.3%	17.1%	29.3%	12.2%	100.0%
Please indicate your level of agreement for each of the following statements about services in your community. - My community has adequate access to healthy and affordable foods	Count	2	5	3	14	17	41
	Row N %	4.9%	12.2%	7.3%	34.1%	41.5%	100.0%

		<b>Disagree</b>	<b>Neither agree nor disagree</b>	<b>Agree</b>	<b>Total</b>
RECODE: Services in your community - My community has adequate opportunities for recreation and leisure for all ages	Count	16	9	17	42
	Row N %	38.1%	21.4%	40.5%	100.0%
RECODE: Services in your community - My community has a thriving business district with access to needed goods and services	Count	12	6	24	42
	Row N %	28.6%	14.3%	57.1%	100.0%
RECODE: Services in your community - My community provides adequate public services like snow removal, garbage collection, or recycling	Count	7	5	30	42
	Row N %	16.7%	11.9%	71.4%	100.0%
RECODE: Services in your community - My community has adequate child care services	Count	30	6	5	41
	Row N %	73.2%	14.6%	12.2%	100.0%
RECODE: Services in your community - My community has adequate senior services	Count	13	10	18	41
	Row N %	31.7%	24.4%	43.9%	100.0%
RECODE: Services in your community. - My community has a quality education system	Count	4	8	30	42
	Row N %	9.5%	19.0%	71.4%	100.0%
RECODE: Services in your community. - My community has adequate public transportation services	Count	26	9	6	41
	Row N %	63.4%	22.0%	14.6%	100.0%
	Count	19	6	16	41

		<b>Disagree</b>	<b>Neither agree nor disagree</b>	<b>Agree</b>	<b>Total</b>
RECODE: Services in your community. - My community has adequate employment opportunities that pay a livable wage	Row N %	46.3%	14.6%	39.0%	100.0%
RECODE: Services in your community. - My community has adequate law enforcement	Count	7	8	26	41
	Row N %	17.1%	19.5%	63.4%	100.0%
RECODE: Services in your community. - My community has enough affordable housing for everyone who needs it	Count	17	7	17	41
	Row N %	41.5%	17.1%	41.5%	100.0%
RECODE: Services in your community. - My community has adequate access to healthy and affordable foods	Count	7	3	31	41
	Row N %	17.1%	7.3%	75.6%	100.0%

### Community Concerns

		<b>Not concerned at all</b>	<b>Slightly concerned</b>	<b>Somewhat concerned</b>	<b>Very concerned</b>	<b>Total</b>
How concerned are you about each of the following in your community? - Substance misuse (alcohol, prescription drugs, tobacco or vaping, illicit or street drugs)	Count	3	8	13	18	42
	Row N %	7.1%	19.0%	31.0%	42.9%	100.0%
How concerned are you about each of the following in your community? - Mental health (anxiety, stress, depression)	Count	5	8	21	8	42
	Row N %	11.9%	19.0%	50.0%	19.0%	100.0%
How concerned are you about each of the following in your community? - Suicide	Count	6	12	18	2	38
	Row N %	15.8%	31.6%	47.4%	5.3%	100.0%
How concerned are you about each of the following in your community? - Access to healthy foods	Count	15	9	12	4	40
	Row N %	37.5%	22.5%	30.0%	10.0%	100.0%
How concerned are you about each of the following in your community? - Food insecurity or hunger	Count	16	11	10	1	38
	Row N %	42.1%	28.9%	26.3%	2.6%	100.0%
How concerned are you about each of the following in your community? - Poverty in my community	Count	7	14	14	5	40
	Row N %	17.5%	35.0%	35.0%	12.5%	100.0%
How concerned are you about each of the following in your community? - Sexually transmitted diseases or infections	Count	18	7	4	1	30
	Row N %	60.0%	23.3%	13.3%	3.3%	100.0%
	Count	13	14	12	2	41

		Not concerned at all	Slightly concerned	Somewhat concerned	Very concerned	Total
How concerned are you about each of the following in your community? - Crime in my community	Row N %	31.7%	34.1%	29.3%	4.9%	100.0%
How concerned are you about each of the following in your community? - Availability of long-term care or assisted living facilities	Count	15	4	13	9	41
	Row N %	36.6%	9.8%	31.7%	22.0%	100.0%
How concerned are you about each of the following in your community? - Availability of elder care services to support independent living, or aging in place	Count	5	9	15	9	38
	Row N %	13.2%	23.7%	39.5%	23.7%	100.0%
How concerned are you about each of the following in your community? - Obesity or overweightness	Count	5	8	18	10	41
	Row N %	12.2%	19.5%	43.9%	24.4%	100.0%

### Violence Concerns in Community

		Not concerned at all	Slightly concerned	Somewhat concerned	Very concerned	Total
How concerned are you about the following types of violence in your community? - Cyber bullying	Count	7	9	16	5	37
	Row N %	18.9%	24.3%	43.2%	13.5%	100.0%
How concerned are you about the following types of violence in your community? - Child abuse or neglect	Count	6	14	9	8	37
	Row N %	16.2%	37.8%	24.3%	21.6%	100.0%
How concerned are you about the following types of violence in your community? - Intimate partner violence	Count	13	12	8	1	34
	Row N %	38.2%	35.3%	23.5%	2.9%	100.0%
How concerned are you about the following types of violence in your community? - Emotional abuse (including intimidation or isolation)	Count	10	14	9	3	36
	Row N %	27.8%	38.9%	25.0%	8.3%	100.0%
How concerned are you about the following types of violence in your community? - Sexual abuse or assault	Count	15	13	5	1	34
	Row N %	44.1%	38.2%	14.7%	2.9%	100.0%
How concerned are you about the following types of violence in your community? - Stalking	Count	23	7	5	1	36
	Row N %	63.9%	19.4%	13.9%	2.8%	100.0%

		<b>Not concerned at all</b>	<b>Slightly concerned</b>	<b>Somewhat concerned</b>	<b>Very concerned</b>	<b>Total</b>
How concerned are you about the following types of violence in your community? - Verbal threats or harassment	Count	14	15	7	2	38
	Row N %	36.8%	39.5%	18.4%	5.3%	100.0%
How concerned are you about the following types of violence in your community? - Gun violence	Count	20	10	6	1	37
	Row N %	54.1%	27.0%	16.2%	2.7%	100.0%

### Medical Services in Your Community

		<b>Strongly disagree</b>	<b>Somewhat disagree</b>	<b>Neither agree nor disagree</b>	<b>Somewhat agree</b>	<b>Strongly agree</b>	<b>Total</b>
Please indicate your level of agreement with the following issues related to medical services in your community. - It is easy to get an appointment for health care services in my community	Count	0	1	1	6	34	42
	Row N %	0.0%	2.4%	2.4%	14.3%	81.0%	100.0%
Please indicate your level of agreement with the following issues related to medical services in your community. - My community has adequate primary care providers and nurses	Count	3	1	3	11	24	42
	Row N %	7.1%	2.4%	7.1%	26.2%	57.1%	100.0%
Please indicate your level of agreement with the following issues related to medical services in your community. - My community has adequate health care services to meet my health care needs	Count	1	6	2	9	24	42
	Row N %	2.4%	14.3%	4.8%	21.4%	57.1%	100.0%
Please indicate your level of agreement with the following issues related to medical services in your community. - My community has adequate dental care providers	Count	4	16	8	8	6	42
	Row N %	9.5%	38.1%	19.0%	19.0%	14.3%	100.0%
Please indicate your level of agreement with the following issues related to medical services in your community. -	Count	27	8	3	1	3	42
	Row N %	64.3%	19.0%	7.1%	2.4%	7.1%	100.0%

		<b>Strongly disagree</b>	<b>Somewhat disagree</b>	<b>Neither agree nor disagree</b>	<b>Somewhat agree</b>	<b>Strongly agree</b>	<b>Total</b>
My community has adequate vision care providers							
Please indicate your level of agreement with the following issues related to medical services in your community. - My community has adequate mental health services	Count	7	13	10	8	1	39
	Row N %	17.9%	33.3%	25.6%	20.5%	2.6%	100.0%
Please indicate your level of agreement with the following issues related to medical services in your community. - My community has adequate access to emergency response services such as ambulance or fire fighters	Count	0	2	0	4	35	41
	Row N %	0.0%	4.9%	0.0%	9.8%	85.4%	100.0%
Please indicate your level of agreement with the following issues related to medical services in your community. - I can easily navigate the health care system in my community	Count	0	2	3	8	29	42
	Row N %	0.0%	4.8%	7.1%	19.0%	69.0%	100.0%
Please indicate your level of agreement with the following issues related to medical services in your community. - I receive quality health care in my community	Count	0	1	3	7	30	41
	Row N %	0.0%	2.4%	7.3%	17.1%	73.2%	100.0%
Please indicate your level of agreement with the following issues related to medical services in your community. - In my community, care is well coordinated across providers and services	Count	0	0	9	10	20	39
	Row N %	0.0%	0.0%	23.1%	25.6%	51.3%	100.0%

		<b>Disagree</b>	<b>Neither agree nor disagree</b>	<b>Agree</b>	<b>Total</b>
RECODE: Medical services in your community. - It is easy to get an appointment for health care services in my community	Count	1	1	40	42
	Row N %	2.4%	2.4%	95.2%	100.0%
	Count	4	3	35	42

		Disagree	Neither agree nor disagree	Agree	Total
RECODE: Medical services in your community. - My community has adequate primary care providers and nurses	Row N %	9.5%	7.1%	83.3%	100.0%
RECODE: Medical services in your community. - My community has adequate health care services to meet my health care needs	Count	7	2	33	42
	Row N %	16.7%	4.8%	78.6%	100.0%
RECODE: Medical services in your community. - My community has adequate dental care providers	Count	20	8	14	42
	Row N %	47.6%	19.0%	33.3%	100.0%
RECODE: Medical services in your community. - My community has adequate vision care providers	Count	35	3	4	42
	Row N %	83.3%	7.1%	9.5%	100.0%
RECODE: Medical services in your community. - My community has adequate mental health services	Count	20	10	9	39
	Row N %	51.3%	25.6%	23.1%	100.0%
RECODE: Medical services in your community. - My community has adequate access to emergency response services such as ambulance or fire fighters	Count	2	0	39	41
	Row N %	4.9%	0.0%	95.1%	100.0%
RECODE: Medical services in your community. - I can easily navigate the health care system in my community	Count	2	3	37	42
	Row N %	4.8%	7.1%	88.1%	100.0%
RECODE: Medical services in your community. - I receive quality health care in my community	Count	1	3	37	41
	Row N %	2.4%	7.3%	90.2%	100.0%
RECODE: Medical services in your community. - In my community, care is well coordinated across providers and services	Count	0	9	30	39
	Row N %	0.0%	23.1%	76.9%	100.0%

**Last CHNA Needs**

		Much worse	Somewhat worse	About the same	Somewhat better	Much better	Total
Three years ago, the last Community Health Needs Assessment identified the following issues as community health needs. To what degree do you believe these issues have changed? – Attracting and retaining young families	Count	1	6	24	7	1	39
	Row N %	2.6%	15.4%	61.5%	17.9%	2.6%	100.0%
Three years ago, the last Community Health Needs Assessment identified the following issues as community health	Count	1	7	29	2	0	39
	Row N %	2.6%	17.9%	74.4%	5.1%	0.0%	100.0%



		<b>Much worse</b>	<b>Somewhat worse</b>	<b>About the same</b>	<b>Somewhat better</b>	<b>Much better</b>	<b>Total</b>
needs. To what degree do you believe these issues have changed? – Availability of resources for aging in place							
Three years ago, the last Community Health Needs Assessment identified the following issues as community health needs. To what degree do you believe these issues have changed? – Having enough child daycare services	Count	8	15	15	2	0	40
	Row N %	20.0%	37.5%	37.5%	5.0%	0.0%	100.0%
Three years ago, the last Community Health Needs Assessment identified the following issues as community health needs. To what degree do you believe these issues have changed? - Not having enough places for wellness activities	Count	1	4	6	15	15	41
	Row N %	2.4%	9.8%	14.6%	36.6%	36.6%	100.0%

		<b>Worse</b>	<b>The same</b>	<b>Better</b>	<b>Total</b>
RECODE: Previous issues – Attracting and retaining young families	Count	7	24	8	39
	Row N %	17.9%	61.5%	20.5%	100.0%
RECODE: Previous issues – Availability of resources for aging in place	Count	8	29	2	39
	Row N %	20.5%	74.4%	5.1%	100.0%
RECODE: Previous issues – Having enough child daycare services	Count	23	15	2	40
	Row N %	57.5%	37.5%	5.0%	100.0%
RECODE: Previous issues – Not having enough places for wellness activities	Count	5	6	30	41
	Row N %	12.2%	14.6%	73.2%	100.0%

### Preventative Health Care Measures

<b>Multiple Response</b>						
	<b>Valid</b>		<b>Missing</b>		<b>Total</b>	
	<b>N</b>	<b>Percent</b>	<b>N</b>	<b>Percent</b>	<b>N</b>	<b>Percent</b>
MRQ5.1 <sup>a</sup>	39	92.9%	3	7.1%	42	100.0%

<b>MRQ5.1 Frequencies</b>				
		<b>Responses</b>		<b>Percent of Cases</b>
		<b>N</b>	<b>Percent</b>	
MRQ5.1 <sup>a</sup>	Which of the following preventative health care measures have you received in the last year? Vaccinations	27	15.1%	69.2%
	Which of the following preventative health care measures have you received in the last year? Annual physical exam	32	17.9%	82.1%
	Which of the following preventative health care measures have you received in the last year? Mammogram	19	10.6%	48.7%
	Which of the following preventative health care measures have you received in the last year? Colonoscopy	9	5.0%	23.1%
	Which of the following preventative health care measures have you received in the last year? Blood pressure or cholesterol screening	30	16.8%	76.9%
	Which of the following preventative health care measures have you received in the last year? Counseling for tobacco use, alcohol dependency, weight loss, behavioral health	5	2.8%	12.8%
	Which of the following preventative health care measures have you received in the last year? Depression screening	9	5.0%	23.1%
	Which of the following preventative health care measures have you received in the last year? Vision exam or annual checkup	24	13.4%	61.5%
	Which of the following preventative health care measures have you received in the last year? Dental exam or annual checkup	24	13.4%	61.5%
Total		179	100.0%	459.0%
a. Dichotomy group tabulated at value 1.				

		<b>Not at all a barrier</b>	<b>Somewhat of a barrier</b>	<b>Extreme barrier</b>	<b>Total</b>
To what degree are each of the following issues a barrier to your ability to access health care services? - Transportation to health care service locations	Count	29	7	1	37
	Row N %	78.4%	18.9%	2.7%	100.0%
To what degree are each of the following issues a barrier to your ability to access health care services? - Distance to access care	Count	27	10	3	40
	Row N %	67.5%	25.0%	7.5%	100.0%
To what degree are each of the following issues a barrier to your ability to access health care services? - Concerns about confidentiality	Count	31	9	1	41
	Row N %	75.6%	22.0%	2.4%	100.0%
	Count	21	15	5	41

		<b>Not at all a barrier</b>	<b>Somewhat of a barrier</b>	<b>Extreme barrier</b>	<b>Total</b>
To what degree are each of the following issues a barrier to your ability to access health care services? - Availability of local services to meet my health care needs	Row N %	51.2%	36.6%	12.2%	100.0%
To what degree are each of the following issues a barrier to your ability to access health care services? - Communication or language barriers	Count	40	0	0	40
	Row N %	100.0%	0.0%	0.0%	100.0%
To what degree are each of the following issues a barrier to your ability to access health care services? - Disability accommodations	Count	29	7	0	36
	Row N %	80.6%	19.4%	0.0%	100.0%
To what degree are each of the following issues a barrier to your ability to access health care services? - Scheduling health care services within clinic hours	Count	36	4	1	41
	Row N %	87.8%	9.8%	2.4%	100.0%
To what degree are each of the following issues a barrier to your ability to access health care services? - The length of time to see a provider, from making an appointment to attending the appointment	Count	35	6	0	41
	Row N %	85.4%	14.6%	0.0%	100.0%
To what degree are each of the following issues a barrier to your ability to access health care services? - The price of prescription drugs, even with insurance	Count	19	14	6	39
	Row N %	48.7%	35.9%	15.4%	100.0%
To what degree are each of the following issues a barrier to your ability to access health care services? - The price of health care services (such as co-payments or deductibles), even with insurance	Count	20	16	5	41
	Row N %	48.8%	39.0%	12.2%	100.0%

<b>Do you currently have a primary care doctor?</b>					
		<b>Frequency</b>	<b>Percent</b>	<b>Valid Percent</b>	<b>Cumulative Percent</b>
Valid	Yes	40	95.2	95.2	95.2
	No	2	4.8	4.8	100.0
	Total	42	100.0	100.0	

<b>Multiple Response</b>						
<b>Case Summary</b>						
	<b>Cases</b>					
	<b>Valid</b>			<b>Missing</b>		<b>Total</b>
	<b>N</b>	<b>Percent</b>		<b>N</b>	<b>Percent</b>	
MRQ5.5 <sup>a</sup>	41	97.6%		1	2.4%	42
a. Dichotomy group tabulated at value 1.						

<b>MRQ5.5 Frequencies</b>				
		<b>Responses</b>		<b>Percent of Cases</b>
		<b>N</b>	<b>Percent</b>	
MRQ5.5 <sup>a</sup>	Where do you find out about health information? Other health care professionals	18	15.4%	43.9%
	Where do you find out about health information? Primary care provider	35	29.9%	85.4%
	Where do you find out about health information? Public health professionals	5	4.3%	12.2%
	Where do you find out about health information? Internet sources	21	17.9%	51.2%
	Where do you find out about health information? Word of mouth (including family and friends)	18	15.4%	43.9%
	Where do you find out about health information? Advertising, such as TV commercials	5	4.3%	12.2%
	Where do you find out about health information? My employer	11	9.4%	26.8%
	Where do you find out about health information? Newspaper	3	2.6%	7.3%
	Where do you find out about health information? Radio	1	0.9%	2.4%
Total		117	100.0%	285.4%
a. Dichotomy group tabulated at value 1.				

<b>Multiple Response</b>						
<b>Case Summary</b>						
	<b>Cases</b>					
	<b>Valid</b>		<b>Missing</b>		<b>Total</b>	
	<b>N</b>	<b>Percent</b>	<b>N</b>	<b>Percent</b>	<b>N</b>	<b>Percent</b>
MRQ5.6 <sup>a</sup>	41	97.6%	1	2.4%	42	100.0%
a. Dichotomy group tabulated at value 1.						

<b>MRQ5.6 Frequencies</b>				
		<b>Responses</b>		<b>Percent of Cases</b>
		<b>N</b>	<b>Percent</b>	
MRQ5.6 <sup>a</sup>	What type of health insurance coverage do you have? (Select all that apply) - Selected Choice Insurance through employer (either your own or a family member's)	35	76.1%	85.4%
	What type of health insurance coverage do you have? (Select all that apply) - Selected Choice Private health insurance (coverage purchased by you)	5	10.9%	12.2%

	What type of health insurance coverage do you have? (Select all that apply) - Selected Choice Government program (Medicare, Medicaid, etc.)	5	10.9%	12.2%
	What type of health insurance coverage do you have? (Select all that apply) - Selected Choice Other (please specify)	1	2.2%	2.4%
Total		46	100.0%	112.2%
a. Dichotomy group tabulated at value 1.				

**SOCIAL HARDSHIP AND DISCRIMINATION**

Did you move to your community in the past year?					
		Frequency	Percent	Valid Percent	Cumulative Percent
Valid	Yes	1	2.4%	2.4%	2.4%
	No	40	95.2%	97.6%	100.0%
	Total	41	97.6%	100.0%	
Missing	System	1	2.4%		
Total		42	100.0%		

		Not difficult at all	Slightly difficult	Somewhat difficult	Very difficult	Total
How difficult was it to do the following things? - Enroll children in school	Count	0	0	0	0	0
	Row N %	0.0%	0.0%	0.0%	0.0%	0.0%
How difficult was it to do the following things? - Find housing	Count	0	0	0	1	1
	Row N %	0.0%	0.0%	0.0%	100.0%	100.0%
How difficult was it to do the following things? - Find health care	Count	0	0	1	0	1
	Row N %	0.0%	0.0%	100.0%	0.0%	100.0%
How difficult was it to do the following things? - Find a job	Count	0	0	0	0	0
	Row N %	0.0%	0.0%	0.0%	0.0%	0.0%
How difficult was it to do the following things? - Find child care	Count	0	0	0	0	0
	Row N %	0.0%	0.0%	0.0%	0.0%	0.0%

Have you experienced discrimination in the past 12 months?					
		Frequency	Percent	Valid Percent	Cumulative Percent
Valid	No	40	95.2%	100.0%	100.0%
Missing	Prefer not to respond	1	2.4%		
	System	1	2.4%		
	Total	2	4.8%		
Total		42	100.0%		

How difficult is it for you to pay for heating, housing, or medical care?					
		Frequency	Percent	Valid Percent	Cumulative Percent
Valid	Not difficult at all	28	66.7%	73.7%	73.7%
	Slightly difficult	3	7.1%	7.9%	81.6%
	Somewhat difficult	5	11.9%	13.2%	94.7%
	Very difficult	2	4.8%	5.3%	100.0%
	Total	38	90.5%	100.0%	
Missing	Prefer not to respond	3	7.1%		
	System	1	2.4%		
	Total	4	9.5%		
Total		42	100.0%		

In the last month, have you had to sleep outside, in a shelter, in your car, at a family member or friend's house, or in a place not meant for sleeping?					
		Frequency	Percent	Valid Percent	Cumulative Percent
Valid	No	41	97.6%	100.0%	100.0%
Missing	System	1	2.4%		
Total		42	100.0%		

<b>Statistics</b>		
What is your age? - Select your age on the slider		
N	Valid	39
	Missing	3
Mean		52.1538
Median		55.0000

<b>RECODE: Age</b>					
		Frequency	Percent	Valid Percent	Cumulative Percent
Valid	Less than 18 years	1	2.4%	2.6%	2.6%
	18 to 34 years	2	4.8%	5.1%	7.7%
	35 to 44 years	8	19.0%	20.5%	28.2%
	45 to 64 years	22	52.4%	56.4%	84.6%
	65 to 84 years	6	14.3%	15.4%	100.0%
	Total	39	92.9%	100.0%	
Missing	System	3	7.1%		
Total		42	100.0%		

<b>What is your gender? - Selected Choice</b>					
		Frequency	Percent	Valid Percent	Cumulative Percent
Valid	Male	3	7.1%	7.3%	7.3%
	Female	38	90.5%	92.7%	100.0%
	Total	41	97.6%	100.0%	
Missing	System	1	2.4%		
Total		42	100.0%		

<b>Multiple Response</b>						
<b>Case Summary</b>						
	<b>Cases</b>					
	<b>Valid</b>			<b>Missing</b>		<b>Total</b>
	<b>N</b>	<b>Percent</b>		<b>N</b>	<b>Percent</b>	
MRQ7.3 <sup>a</sup>	41	97.6%		1	2.4%	42
a. Dichotomy group tabulated at value 1.						

<b>MRQ7.3 Frequencies</b>				
		Responses		Percent of Cases
		N	Percent	
MRQ7.3 <sup>a</sup>	Which of these groups best represents your race? Select all that apply. - Selected Choice White	38	92.7%	92.7%
	Which of these groups best represents your race? Select all that apply. - Selected Choice Asian	1	2.4%	2.4%
	Which of these groups best represents your race? Select all that apply. - Selected Choice Prefer not to say	2	4.9%	4.9%
Total		41	100.0%	100.0%
a. Dichotomy group tabulated at value 1.				

<b>Do you identify as Hispanic, Latine, or of Spanish origin?</b>					
		Frequency	Percent	Valid Percent	Cumulative Percent
Valid	No	39	92.9%	100.0%	100.0%
Missing	Prefer not to say	2	4.8%		
	System	1	2.4%		
	Total	3	7.1%		
Total		42	100.0%		

<b>What is your estimated annual household income?</b>					
		Frequency	Percent	Valid Percent	Cumulative Percent
Valid	Less than \$15,000	1	2.4%	3.3%	3.3%
	\$15,000 - \$24,999	1	2.4%	3.3%	6.7%
	\$25,000 - \$49,999	4	9.5%	13.3%	20.0%
	\$50,000 - \$74,999	6	14.3%	20.0%	40.0%
	\$75,000 - \$99,999	6	14.3%	20.0%	60.0%
	\$100,000 - \$149,999	9	21.4%	30.0%	90.0%
	\$150,000 and over	3	7.1%	10.0%	100.0%
	Total	30	71.4%	100.0%	
Missing	Prefer not to say	7	16.7%		
	System	5	11.9%		
	Total	12	28.6%		
Total		42	100.0%		



What is the highest level of education you have completed?					
		Frequency	Percent	Valid Percent	Cumulative Percent
Valid	High school graduate or equivalency	4	9.5%	10.3%	10.3%
	Some college, no degree	10	23.8%	25.6%	35.9%
	Associate's degree	9	21.4%	23.1%	59.0%
	Bachelor's degree	9	21.4%	23.1%	82.1%
	Graduate or professional degree	7	16.7%	17.9%	100.0%
	Total	39	92.9%	100.0%	
Missing	System	3	7.1%		
Total		42	100.0%		

Which of these categories best describes your employment status?					
		Frequency	Percent	Valid Percent	Cumulative Percent
Valid	Employed full time	28	66.7%	71.8%	71.8%
	Employed part time	6	14.3%	15.4%	87.2%
	Retired	5	11.9%	12.8%	100.0%
	Total	39	92.9%	100.0%	
Missing	Prefer not to say	1	2.4%		
	System	2	4.8%		
	Total	3	7.1%		
Total		42	100.0%		

What is your marital status?					
		Frequency	Percent	Valid Percent	Cumulative Percent
Valid	Single	4	9.5%	9.8%	9.8%
	Married or in a domestic partnership	32	76.2%	78.0%	87.8%
	Divorced or separated	3	7.1%	7.3%	95.1%
	Widowed	2	4.8%	4.9%	100.0%
	Total	41	97.6%	100.0%	
Missing	System	1	2.4%		
Total		42	100.0%		

<b>Statistics</b>		
How many people live in your household? Use numbers only. If you live alone, put "1".		
N	Valid	41
	Missing	1
<b>Mean</b>		2.7561
<b>Median</b>		2.0000

<b>RECODE: How many people live in your household?</b>					
		<b>Frequency</b>	<b>Percent</b>	<b>Valid Percent</b>	<b>Cumulative Percent</b>
Valid	1 person	5	11.9%	12.2%	12.2%
	2 to 4 people	31	73.8%	75.6%	87.8%
	5 or more people	5	11.9%	12.2%	100.0%
	Total	41	97.6%	100.0%	
Missing	System	1	2.4%		
Total		42	100.0%		

<b>Do you have access to reliable internet in your home?</b>					
		<b>Frequency</b>	<b>Percent</b>	<b>Valid Percent</b>	<b>Cumulative Percent</b>
Valid	Yes	41	97.6%	100.0%	100.0%
Missing	System	1	2.4%		
Total		42	100.0%		

<b>How did you get access to this survey, or survey link? - Selected Choice</b>					
		<b>Frequency</b>	<b>Percent</b>	<b>Valid Percent</b>	<b>Cumulative Percent</b>
Valid	Hospital or public health website	9	21.4%	22.0%	22.0%
	Hospital or public health social media page (e.g. Facebook)	1	2.4%	2.4%	24.4%
	Hospital or public health employee directly	11	26.2%	26.8%	51.2%
	Economic development website or social media page	1	2.4%	2.4%	53.7%
	Other website or social media page (please specify)	7	16.7%	17.1%	70.7%
	Direct email (please specify from where)	7	16.7%	17.1%	87.8%
	Another way (please specify)	5	11.9%	12.2%	100.0%
	Total	41	97.6%	100.0%	
Missing	System	1	2.4%		
Total		42	100.0%		

<b>Distribution Channel</b>		<b>Frequency</b>	<b>Percent</b>	<b>Valid Percent</b>	<b>Cumulative Percent</b>
Valid	anonymous	38	90.5%	90.5%	90.5%
	qr	2	4.8%	4.8%	95.2%
	Total	1	2.4%	2.4%	97.6%
		42	100.0%	100.0%	