



Dickinson Foundation

Firm Foundations

Rooted in Faith



Inside

- 2 From the Director*
- 4 Bringing 3D Mammography to Dickinson*
- 5 World Class Surgery on the Western Edge*
- 7 Annual Events*
- 8 News From Our Clinics*

Building Firm Foundations



Jodi Bosch
Foundation
Director

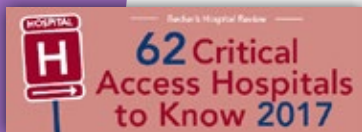
Hospitals around the country, including those which are part of Catholic Health Initiatives, increasingly rely on support from their respective Foundations. A strong, committed Foundation like ours, fueled by generous donors and a creative, dedicated staff and board, often means the difference between providing only the basics and truly meeting needs and going above and beyond. We are so grateful for our engaged and caring donors who ensure that the CHI St. Alexius Health Dickinson Foundation remains a vital resource for our hospital, our community and our region.

We are definitely in dynamic times. At the same time dollars from government sources are decreasing, hospitals are charged with doing more. I continue to learn from care takers, my colleagues, donors, volunteers and people throughout this community. I am so thankful for each of you and all that you do to keep our hospital and our community healthy.



Local staff, facility recognized with numerous awards

CHI St. Alexius Health Dickinson Medical Center in Dickinson, North Dakota was recently named one of the Top 100 Critical Access Hospitals (CAHs) in the United States by The Chartis Center for Rural Health / iVantage Analytics.



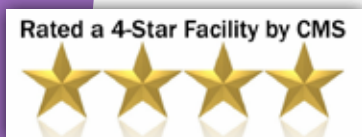
CHI St. Alexius Health Dickinson was also promoted to a 4-Star Facility by CMS (Centers for Medicare & Medicaid Services) via the Hospital Compare tool on Medicare.gov.

And earlier in 2017, CHI St. Alexius Health Dickinson was named one of the nation's Top 62 Critical Access Hospitals To Know by Becker's Hospital Review.



“These achievements are very gratifying and validate our daily commitment to providing the best healthcare possible to our community, while maintaining an efficient and effective facility.”

Reed Reyman, President at CHI St. Alexius Health Dickinson Medical Center



Other recent accolades include Best of the Western Edge awards, voted by community members, with winners in the following categories:

- CHI St. Alexius Health Dickinson for Urgent Care
- Dr. Thomas Arnold for Obstetrics/Gynecology
- Mary Jo Wicks, FNP-BC for Physician Assistant/Midlevel Provider

What are your dollars doing?

During a time in healthcare where budgets are tight and capital dollars are minimal, CHI St. Alexius Health Dickinson Foundation helps in more ways than you can imagine. Most individual gifts we receive during the year still come with the instruction to designate their dollars to "equipment needs". We are always grateful for those gifts for two reasons: First, it's a strong indicator that the community fully trusts decisions made by the Foundation board. Second, it gives us the latitude to make sure funding will have a direct impact on the patient experience. We have listed some of the equipment and additional programs purchased that we believe you will consider money well spent!

- *Ultrasound Probe*
- *Pediatric Colonoscope*
- *High flow Insufflation Unit - Provides visual aid during abdominal surgical procedures*
- *Neonatal Ventilator*
- *Prenatal Data Management*
- *Trophon EPR Disinfection System for Radiology*
- *Ultrasound System for Radiology*
- *C-Arm - X-Ray for Surgery*
- *Hematology Analyzer for Beach Clinic*
- *Lab Analyzer for Beach Clinic*
- *Anesthesia Monitor*
- *Bladder Scanner*
- *System 8 Orthopedic Equipment*
- *Coag Analyzer*
- *Orthopedic Hip Position Board*
- *Diabetic Support Program*
- *Continuing Education for Lab*
- *Employee Scholarships*
- *Heavenly Babies Resources*
- *Fetal Monitoring Continued Education*

Auxiliary of CHI St. Alexius Health Dickinson

The CHI St. Alexius Health Dickinson Auxiliary, while traditionally recognized for volunteer contributions, is also one of our most generous donors.

This past year, the Auxiliary completed its \$100,000 pledge to our new facility here at CHI St. Alexius Health Dickinson. While continuing their philanthropic goals all year long, they are on-pace to raise approximately \$15,000 this year alone through numerous annual fundraisers.

At CHI St. Alexius Health, more than 140 community members are part of the hospital Auxiliary, of which approximately 1/3 are active volunteers in the hospital, for Auxiliary events or at home. These volunteers dedicate their time, talents and resources to help our hospital and clinic offer the highest quality healthcare to the community.



Engagement Opportunities

There are many ways that you can express your Spirit of Giving and get involved:

- *Serve on a fundraising event committee such as Golf Classic, Charity Ball or Glow Run.*
- *Join the Silver Prestige Club for ages 55+.*
- *Join CHI St. Alexius Health's Auxiliary.*
- *Attend, sponsor or donate an in-kind item to a fundraising event.*
- *Make a charitable gift to CHI St. Alexius Health Dickinson Foundation. Check with your company to see if it will match your charitable gift.*
- *Make a planned gift to CHI St. Alexius Health Dickinson Foundation.*
- *Take a tour of our new facility.*
- *Become a blood donor.*



Playing a Vital Role at Wibaux Health Fair

The Annual Wibaux County Health Fair is a key event for individuals who live in and around Wibaux County, Montana. CHI St. Alexius Health Dickinson and Beach Family Clinic have always had a presence at the health fair hosted by the Wibaux County Extension Office, but this year we took on a key role by providing blood draws and health screenings to over 320 of the fair's attendees.

Led by Director of Lab Christine Haaland, the team staffed 10 blood draw stations and multiple registration stations, resulting in short wait times and happy patients. Thanks to all for a great event!

Earn Your Scrubs Program

In February 2018, four community members participated in the Foundation's "Earn Your Scrubs" program: (l-r) Marcus Lewton, Cory Ash, Jared Bullinger, and Jennifer Braun. The program's goal is to educate the community on how our hospital operates, from a mission and financial standpoint to experiencing our frontline care. Participants have the chance to nominate other community members to participate in future Earn Your Scrubs programs.



Bringing 3D Mammography to Dickinson

At the time of this publication, CHI St. Alexius Health Dickinson will be in the midst of final preparations to bring in our brand new 3D Mammography Unit. More and more women are finding that 3D mammography is right for them. The future of breast imaging is 3D Mammography! Our radiology and leadership teams have been working tirelessly to secure the best possible piece of equipment, with the best data, to bring to our home community. Our goal is to bring the Dickinson community into the next era of mammography, one that diagnoses cancer earlier, gives fewer false alarms, and simply brings the care you need to you, saving you miles and time so you don't have to drive 100 miles down the road for this important type of test.

Stay tuned for our 3D Mammography Open House event this summer!



Director of Radiology Tracey Mann poses by the current 2D mammography unit, which will soon be replaced by the most advanced 3D mammography unit on the market.

World Class Surgery on the Western Edge

By Donna Abrahamson

From the day I walked in for my initial appointment until I was released following a total shoulder replacement, I couldn't have been in a better hospital. CHI St. Alexius Health Dickinson took care of me from the beginning to the end. My initial reaction was I couldn't believe the friendliness displayed by not only the receptionists but the whole staff as well. Throughout the whole process I was incredibly well-informed with not only the initial diagnosis, but am still being updated on the progress I have seen since the surgery was completed.

My experience pre-surgery to post-surgery was phenomenal. Each of the nurses who worked on and with me were not only incredibly knowledgeable, but super friendly as well. The whole staff was very warm and caring from beginning to the end.

I was also impressed with many other areas of the hospital. The rooms were big enough but had a very homey feeling to them. Even the colors of the rooms enhanced the experience as they were very relaxing and tranquil. The food service was exceptional, as anything that a patient could want would be provided.

The surgery went so well because of the doctor who performed the procedure. Before the surgery it was very relaxing as my husband and I met with the surgeon Dr. Cote and were informed step-by-step of what it would entail. I was checked on numerous times by the staff after the surgery was done and still am in contact with them as the total process is coming to an end.

It is truly a blessing to have the care CHI St. Alexius is able to provide to our city. With an easy-to-get-to location on the west side of town that has ample parking and a tremendous facility, the clinic and hospital is certainly one of the finest healthcare facilities in North Dakota. With all of the up-to-date equipment and an experienced staff who runs it, we couldn't ask for a better situation. Rather than getting in a vehicle and chasing down the road, we only have to take a short drive and we are in the midst of excellent healthcare.

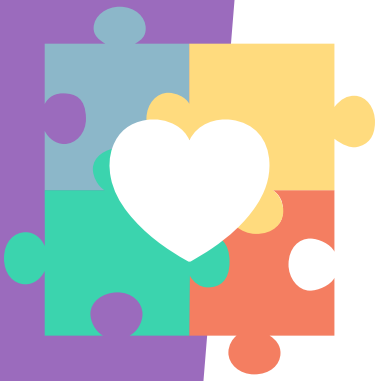
It only makes sense to stay at home when the clinic/hospital provides everything Bismarck or Fargo could provide to the east and Billings to the west.

More than ever, my husband John and I feel it is important to support hometown businesses, as the money spent in Dickinson stays for the most part in the city as well. When the new hospital was just a dream, there were some local community members who stepped up to the plate and made sure Dickinson had a top-notch facility. There were very generous people who laid out the money to make this a reality. With community members and local donors, the project became a reality!

I would recommend CHI St. Alexius Health Dickinson to anyone!



Donna (center) poses with some of the members of her care team. From l-r, Shari Stein, LPN, Day Surgery/Pre-Op; Ashley Krieg, RN, Med/Surg In-Patient Unit; Dr. Derrick Cote, Orthopedic Surgeon; and Lorrissa Bohlman, Certified Registered Nurse Anesthetist.



Employee giving: ***Be a piece of the puzzle***

Employees at CHI St. Alexius Health are known for the high-quality, compassionate care that they provide to their patients on a daily basis. The devoted team here loves the work they do and consistently goes above and beyond for our friends, neighbors, family members, and visitors. Through our Foundation, we encourage CHI St. Alexius Health employees to contribute to our Medical Equipment Needs fund. The campaign results were impressive this last year as they raised over \$25,000. This campaign highlighted true caring and kindness shown by CHI employees. The funds supported by the campaign will have a much greater reach and impact as a result of their generosity. The health and well-being of our community starts with the talented team of people who come to work at CHI St. Alexius Health.

Joseph Ruark, VP of Operational Finance, splits his time between CHI St. Alexius locations in Dickinson and Williston, and recently signed up to contribute on a regular basis.

"I know my contributions will be used to purchase equipment, such as a 3D mammography, to better serve our patients and the community."

***Last year from July 2016 - June 2017
we provided community health
education and outreach:***

33 Programs

6,351.75 Staff Hours

272 Volunteer Hours

10,472 People were directly served

\$159,358 in benefit

Includes activities carried out to improve community health and health care services that are subsidized because they meet an identified need in the community. This includes members of our staff attending health fairs, speaking engagements, school job fairs, hands on demonstrations, volunteer services and diabetes education.

COMMUNITY BENEFIT SUMMARY TRADITIONAL CHARITY CARE \$1.9 million

Health care services provided free of charge or at a discounted fee schedule to people who meet pre-determined financial criteria. As required for government reporting, this figure is based on calculated costs, not charges to patients.

UNPAID COSTS OF PUBLIC PROGRAMS \$141,450.00

Medicaid and Medicare shortfalls, which are deficits created when CHI St. Alexius Health Dickinson receives payment from the government that are less than the cost of care for public programs.

Glow Run set for August 1st

CHI St. Alexius Health Dickinson and Sanford Health Dickinson are partnering to host a Glow Run 5K for Diabetes on Wednesday, August 1, 2018. Back by popular demand, the after-dark walk/run will take place at Rocky Butte park, with registration at the new Veterans Memorial Building near the Dickinson Bandshell. Funds raised will be divided between local diabetes education programs at CHI St. Alexius and Sanford. Registration available soon at Active.com! Stay informed at Facebook.com/glowrun5kdickinson.



Golf Sports Classic

Save the Date

July 14, 2018



As always, our sponsors and attendees play a major role in the success of the annual Golf Sports Classic. We also have many Golf Classic Committee members and volunteers to thank, whose generosity of time enables us to coordinate a well-run, organized event. For 26 years, this event has been instrumental in raising dollars for technology upgrades and essential improvements in equipment. We hope to see you again this year!

During the Golf Sports Classic on July 8, 2017, Jerry McDowell of Dickinson got a hole-in-one on Hole Number 6 at the Heart River Golf Course, winning himself a 2017 Cadillac XT5 Luxury AWD sponsored by Sax Motor Company!

Charity Ball Celebrates 35 Years



Dr. William "Matt" Lowe and wife Vicki enjoying the night's events.

The 35th Annual Charity Ball presented by CHI St. Alexius Health Dickinson Foundation was held Saturday, November 18th at the Ramada Grand Dakota Lodge in Dickinson. Attendees of this year's ball enjoyed a glamorous circus theme and music by live band Judd Hoos.

Over the past 8 years alone, the Charity Ball has raised approximately \$1.2 Million for CHI St. Alexius Health Dickinson Medical Center and clinics. Special thanks to our dedicated committee members and faithful sponsors for making this event a continued success.

Mark your calendars for this year's Charity Ball, to be held Saturday, November 17, 2018!

Hoedown for Hospice

Save the Date

CHI Health at Home—Home Health & Hospice was thrilled to partner with Choice Financial to host the first annual Hoedown for Hospice in August 2017 at the Prairie Hills Mall Parking lot. Serving 550 people, the event not only grew awareness for local hospice program, but also raised an amazing \$31,236 for the Dickinson CHI Health at Home location. Musical performances by the cast of the *Medora Musical* had everyone tapping their toes as they enjoyed their lunch of pulled pork sandwiches, baked potatoes, baked beans, and frozen yogurt. Thank you to Choice Financial for facilitating this wonderful event.

This year's Hoedown will be held Tuesday, July 31, 2018. Hope to see you there!



News from our Clinics



Same Day Appointments: ***We can see you today!***

CHI St. Alexius Health's clinics in Dickinson and Beach are offering their patients same day appointments. For urgent concerns like fever, coughs, colds, earaches, or UTIs, call Dickinson Medical Clinic at 701.456.4200 or Beach Family Clinic at 701.872.3777 to be scheduled later that day. You will be scheduled with your preferred provider if available. If they are unavailable, we will offer the provider who can see you soonest.

First in the state to offer **CenteringPregnancy®**

Dr. Thomas Arnold, OB/GYN, was passionate about bringing CenteringPregnancy® to Dickinson ever since he was introduced to this group model of prenatal care by colleagues in other regions of the United States. The results this program enjoyed in other parts of the country made a huge impression on Dr. Arnold – lowered rates of preterm births, higher breastfeeding rates, and higher patient and physician satisfaction scores. Plus, with the growing population of out-of-state mothers having babies in Dickinson, the social connections made in Centering could offer friendship and support to women who otherwise did not have many connections in the community.

CHI St. Alexius Health Dickinson pursued the training and process to bring CenteringPregnancy® to Dickinson, becoming the first approved site in North Dakota to offer the program in 2017. Expectant mothers receive the exact same prenatal care as they would with a one-on-one appointment, plus added time with their providers, added educational time, and added connectedness with their peers.

All of the women's health providers at CHI St. Alexius Health Dickinson's Medical Clinic are trained in and offer CenteringPregnancy® groups: Dr. Thomas Arnold, Dr. William Matt Lowe, Dr. Craig Wolf, and Mary Jo Wicks, FNP-BC.

Pictured below: Dr. Arnold and staff pose with the first CenteringPregnancy Reunion Group in January 2018.



Visiting Specialists Did you know CHI St. Alexius Health Dickinson hosts visiting specialists in the following areas to save you time and travel? Cardiology; Employee Assistance Program; Orthotics; Psychology; Nephrology; Pediatric Neurology; Pediatric Asthma; and Bladder Care. Inquire with your specialty provider if they travel to Dickinson for office visits, or call us at 701-456-4200.

Focus on Pediatric Asthma Clinic The most recent addition to that list is our monthly Pediatric Asthma Clinic. We see pediatric asthma patients in the CHI St. Alexius Health Dickinson Medical Clinic the 3rd Wednesday of every month. Patients are assisted by a registered respiratory therapist in Dickinson, and together they converse with the care team from Bismarck's Regional Children's Asthma Clinic via teleconferencing technology.

Save on travel and schedule your child's asthma appointment by calling 701-530-8538.

with Gratitude to our donors

The following donors generously supported CHI St. Alexius Health Dickinson Foundation during calendar year 2017 (January 1, 2017-December 31, 2017). Their contributions helped the Hospital continue its tradition of excellence by providing funds to purchase new equipment, support healthcare education and community health programs, and provide care for those in need. It is with pleasure and deep gratitude that we recognize the following donors:

ANNUAL GIVING

Visionaries (\$25000 +)

Corporations, Foundations & Organizations

Wyoming Casing Service, Inc.
American Bank Center
Connie Woodbury
Baker Boy
Steffes
Engel Kesting Foundation
Consolidated Telcom
CHI St. Alexius Health Dickinson
Auxiliary
Steffes Corporation

Ambassadors (\$10,000-\$24,999)

Corporations, Foundations & Organizations

Baranko Bros, Inc.
Dickinson Ready Mix Company
TMI Systems Design Corporation
Ebeltoft, Sickler, Lawyers PLLC
Gate City Bank
Grand Dakota Partners, LLC

Individuals

Larry and Jill Tinjum
Dr. Thomas and Marie Arnold
Ken and Lee Steier

Patrons (\$5000-\$9999)

Corporations, Foundations & Organizations

Sax Motor Company
Charbonneau Car Center
Trial Runners
The Crossing
Dakota Community Bank & Trust, N.A.
Kuntz Builders, Inc.
Cleon G Engel Family Unified Trust
Laurine Engel Family Unified Trust
Bob's Oil Field Service, Inc.
Dacotah Banks, Inc.
Legend Energy Services LLC
Pump Systems, LLC
Mountain Supply
The Dickinson Press & The Advertiser
The Grainger Foundation

Individuals

Dennis and Vaune Johnson
Peter Rackov
Patrick and Jill Healy
Kathy Fisher
Dr. Dennis Wolf
Bradley and Brenda Fong
Kristi and Randal Schwartz
Richard and Shirley Dukart
Bradley Jaeger

Partners (\$1000-\$4999)

Corporations, Foundations & Organizations

Fisher Industries
Blackridge Enterprises, LLC
Stevenson Funeral Home, Inc
Badlands Monument Company
St. John Evangelical Lutheran Church
Mackoff Kellogg Law Firm
Highlands Engineering & Surveying
PLLC
Dakota Supply Group
Ernst, Inc.
East End Auto and Truck Parts, Inc.
Bosch Lumber Company, Inc.

Accessorize LLC

DL Jones Construction Services, LLC
Britton Jewelers, LTD
MBI Energy Services, Inc.
H&H Services
Interwest Petroleum Corporation
Knights of Columbus Council 6308
Rehab Visions
Reichert Armstrong
Roers West, LLC
DCI Credit Services, Inc.
Meridian Energy Group, Inc
All American Travel
Tooz Construction, Inc.
Winn Construction, Inc.
WPX Energy, Inc.
Parkway Ford Sales, Inc.
Wells Fargo Foundation
Applied Industrial
Choice Financial
Clear Creek Plumbing and Heating
ConocoPhillips Lower 48
Electric Sales & Service, Inc.
Irsfeld Pharmacy, P.C.
J. E. Dunn Construction Company
KQCD TV-STC Broadcasting, Inc.
Nafzger Family Foundation
Paradise Dry Cleaners, LLC
Roers West, LLC
West Dakota Fox

Individuals

Calvin and Nancy Gustafson
Chad and Kimberly Heidt
Lawrence Bares
Margaret Just
Scott and Tammie Meschke
Duane Splichal
Paul and Laurie Steffes
Mike and Sheryl Lefor
Michelle Charbonneau
Jeff and Marya Skaare
David and Dr. Shawna Baker
Susie Lefor
Willie and Billie Winn
Kayla Kleinjan
Lola Hedstrom
Bruce Hoffmann
Christine Haaland
Troy and Jodi Bosch
Robert and Virginia Zent
Betty Scherr
Reed and Sandra Reyman
Rocky Svihl
Christopher and Susan Price
Lona Gordon
Dave Greenwood
George Wald
Glen and Renee Hochhalter
Scott and Kathy Olin
Matt Goodson
Larry and Judi Schnell
Melvin and Dorothy Meduna
Damian and Suzanne Sobolik
Jon and DeeAnna Opstedahl
Nic and Terri Stevenson
Dr. William Lowe
Debra Marshall

Supporters (\$500-\$999)

Corporations, Foundations & Organizations

DSU Foundation
Independent Order of Odd Fellows
Rock Star Party Bus
Artic Armaments
Ace Hardware
Fraternal Order of Eagles-Dickinson
Aerie No 2328
Logo Magic, Inc.
JJPR Pizza LLC
Cross Fit Amicus
I. Keating Furniture World, Inc.
Quality Quick Print, Inc.
Laura Cook
IMS Health
Arctic Armaments
Dale A. Hansen Trust
Massage Therapy Clinic
Fluffy Fields
Brandie Regenscheid
Annie Johnson
Mercy Hospital - Devils Lake
Alex Stockert
Viking Glass of ND, Inc.
The Hub Convenience Store
Slow Poke BBQ
LRS Healthcare
Continental Resources Inc -
Distributing Account
Theodore Roosevelt Medora
Foundation
Midcontinent Cable TV
St. Anthony Charity Contribution
Fund
St. Benedict's Health Center
Valley Med Flight Inc
Army's West, Inc.
B2 Lounge
Dickinson State Heritage Foundation
Dire Enterprises, LLC
ENG Lending
Fine Touches LLC
Border States Electric Supply-
Dickinson
Ironworks Welding, Inc.
Kadmas Lee & Jackson, Inc.
Legend Homes, Inc.
Marathon Oil Company

Individuals

Tyler Reisenauer
Cassie Thompson
Zach and Katie Harrington
Dan and Carmin Erickson
Nick Grant and Brandi Ouellette
Shawn and Denise Soehren
Gregg and Melanie Fitterer
Dr. David Ness, AuD
Tom Kirchen
Brandon Beauodin
Richard Hummel
Clint and Annie Johnson
Jane Davis
Tracy and Nichole Tooz
Mort and Cheryl Krieg
Noreen Kudrna
Cathy Murphy
Melanie Oltmanns
Katie Palmer
Lee and Shari Stein
Stan Olheiser
Dan and Carla Porter
Jody and Carla Arthaud
Dan and Dana Glasser
Haylee Cripe
Christa Hugelen
JoAnn Nupen Lindemann
Lynette Silbernagel
Virginia Zent

Friends (\$100-\$499)

Corporations, Foundations & Organizations

2 Puttz LLC
3rd Avenue Floral and Greenhouse
ABC Fencing & Oil Field Services
Action Cleaning Service
Advanced Vision Centers, Inc.
Agri Insurance, Inc.
Aloha Tan
Artistic Exchange Dance Studio
ASE Inc.
Badlands Big Sticks
Baranko Bros, Inc.
BC6 Builders LLC
Beauty Bar Salon & Day Spa
Better Vision P.C.
Blue Hawk Audio and Video
Blue Hawk Touchdown, Club Inc
Blue Moon, LLC

Our People

Hospital and Clinic leadership consists of our President and 5 administrative team members.

Over 350 employees

Over 240 volunteers

Active medical staff of 29 physicians representing the hospital and clinics

Brady Martz & Associates PC.
Bully Pulpit Golf Course
Cargill West Fargo Team
Catholic Health Initiatives
Choice Financial
Clean Sweep
CNC Clothing Gallery
Coca-Cola Bottling Company of
Dickinson
Cornerstone Bank
Cowboy Cafe LLC
Davis Designs
Dickinson API
Dickinson Countryhouse
Dickinson Parks and Recreation Dept
Dickinson Roughrider Kiwanis Club
District 8 Alcoholics Anonymous
Domino's Pizza
Dryland Enterprises, LLC
DT Mobile Catering
El Sombrero Mexican Restaurant
Estate of Carl W Schnaidt
Halcon Resources
Hawktree Golf Club
Healer Valley Services LLC
Hendrickson Financial Services
Hoerner Rodakowski, PC
Holiday Gas Station
JB's Window Cleaning
Jerome Distributing, Inc
Joy Inspired Gifting
Just Dents
Kay Kuske Estate
KFYR-TV 5
Kirkwood Bank and Trust
KO Construction
Liquor Warehouse
LMS Photography
Mackoff Kellogg Law Firm
Mainstream Boutique
Martin Construction
Mulligans Catering
ND Pharmacy, Inc.
Newby's Ace Hardware
Out of Town
Paw and Claw Pet Palace
Players Sports Bar and Grill
Premier Fence, LLC
Prestige Worldwide LLP
Qdoba Mexican Eats
Region VIII Council on Aging
Roughrider Electric Cooperative, Inc.
Roughrider Racing, Inc.
Roughrider RV's, Inc.
Runnings Farm Fleet
Salon 21 by Sara
Schlotzsky's
Schwartz Quarter Horses
Simply Flowers
Sticka Dental Clinic PC
Taylor Nursery
The Links Grille and Bar, LLC

The Sweet Melange
West River Conference of Social
Welfare
Western Cooperative Credit Union
Whiting Oil & Gas Corporation
Individuals
Yemisi Aladeselu
Judy Anthony
Jackson and Marisa Armstrong
Kelly and Kjersti Armstrong
Savanah Arnott
Michael and Tami Ballard
Peggy L. Bares
Kristy M. Baumgartner
Joe and Joan Berger
Scott and Tara Bieber
Austin Boepple
Delores M. Bookey
Travis and Sarah Bookey
Bill and Irene Bosch
Carole Bovee
David and Kathy Bren
Brenda Brost
Ann B. Cabral
Tiffany M. Cadwell
Dennis and Phyllis Cannon
Caroline Connell
Dr. Derrick Cote
Joanne Dahl
Martin and JoAnn Decker
Bernarda Doolittle
Paul and Gail Ebeltoft
Ann Eberts
Patricia M. Eckes
Wayne Eggert
James Ehli
Evelyn C. Elberg Waleri
Dan Erickson
Thomas and Nicki Fath
Kelvin A. Faulhaber
Shirley Fetch
Georgie Ann Ficek
Laura L. Filkowski
Eleanora B. Fischer
Brian and Amanda Fisher
Carter and Stephanie Fong
Sharleen J. Fraase
Darrell and Dee Frank
Marcia Frank
Theodore D. Frank
Rose Frank Family
Casey Fredericks
Katie L. Froehlich
Dan and Lori Galster
Eugene W. Glaser
Joelle B. Goldade
Rynae Golke
Patricia J. Goodall
Steve Goodall
Brian and Amy Grant
Dustin and Melani Grosulak
Nate Bouray and Jen Grosz

Daniel and Holly Gruhlke
Rosalie A. Hall
June Haller
Rondee Hanna
Theresa Hanson
Josh Hardin
Michelle M. Hardy
Michael and Kaley Haugen
Brittany Haugtvedt
Kathy R. Hebert
Chad and Kim Heidt
Luella Hendricks
Marge Hitchrick
Sean Hope
Deborah Howie
Kathryn Huettl
Josh and Rosemary Stenehjelm
Erv L. Inniger
Jeff Jackson
Dennis and Vaune Johnson
Julie Johnson
Audrey Jordan
Linda Kittilson
Bethol Knutson
Shirley Koffler
Bryan A. Kostelecky
Matthew and Lisa Kostelecky
Brent Kovash
Olivia Krebs
Brian Kubas
Robi and Trina Kudrna
Wayne Kudrna
Dr. David A. Kuylen
Tara Laber
Kim Landis
Katherine E. Lang
Ken Lang
Lindsay Lange
Jason and Amy Lantz
Judith J. Larson
Luke and Bruke Leno
Karen Lynch
Kelsie Maher
Melissa Maher
Martha Marquart
Bonnie L. Marsh
Robyn and Lynn McChesney
Kevin McGeever
Alison L. McLain
Brad Meidinger
Kay Mikkelsen
Wilbert J. Miller
Guy and Sandra Moos
Pete and Sue Morowski
Terri Nash
Dr. David A. Ness, AuD
Marilyn K. Nielsen
Mary E. Nordsven
Maggie Obergewitch
John and Jessica Odermann
Scott and Jodi Olsonawski
Eugene R. Padilla

Sam and Donna Pasicznyk
Joanne Peterson
Rick and Courtney Presthus
Chris and Ashley Rasmussen
Wayne Rau
Pamela J. Reichert
Catherine C. Riddick
Eugene Robinson
Margaret A. Robinson
Kirk Ross
Joseph Ruark
Lance and Lacey Rustand
Cynthia M. Sabrosky
Diane P. Sams
Leona Sand
Irene L. Schafer
Linda Schaff
Josephine Scheeler
Allison Schilinger
Jace and Amie Schillinger
Diane T. Schmidt-Auch
Jeffrey Schneider
Linda D. Schnell
Janet Schobinger
Darcy Schweitzer
MaryAnn Seiler
Luann Senescall
Rose Senn
Steve Silkey
Jeff and Marya Skaare
Teri Lynn Steckler
Kyle and Amanda Steffes
Craig Steve and Millie Wagner
Stacy Stice
Anna M. Stockert
Debra D. Stockert
Michelle Stuber
Shea A. Thomas
Cheryl A. Todd
Tracy and Nichole Tooz
Ryan and Sarah Trestum
Darcy Turcotte
Ardis Ulmer
Mary Ann Unruh
Tima and Kelsey Vandemark
Ray and Susie Veverka
Nathan and Nicole Wandler
Gayleen M. Wanner
Jordan Wanner
Marilyn S. Wanner
Doug and Olivia Wellenstein
Donna Wolf
Dr. Craig and Destiny Wolf
Darlene L. Zarak
Delores Zastoupil
Debra J. Zimmerman

A LEGACY OF GIVING

Lifetime Donor Champions Club (\$500,000 and up)

Corporations, Foundations & Organizations

Baker Boy
ConocoPhillips Lower 48
Marathon Oil
Wyoming Casing Service, Inc.

Lifetime Donor Grande Club (\$100,000-\$499,999)

Corporations, Foundations & Organizations

American Bank Center
Baranko Bros, Inc.
Bosch Lumber Company, Inc.
Dakota Community Bank
Dickinson Ready Mix Company
Edward Jones
Engel Kesting Foundation
Grand Dakota Partners, LLC

J. E. Dunn Construction Company
Martin Construction
Occidental Petroleum Corp
Otto Bremer Foundation
Parkway Ford Sales, Inc.
Steffes Corporation
The Leona M. and Harry B. Helmsley
Charitable Trust

TMI Systems Design Corporation
United Way of Dickinson, Inc.
West Plains Electric
West Plains, Inc.
Whiting Oil & Gas Corporation
Winn Construction, Inc.

Individuals

Estate of Louise Anderson
Dr. Thomas and Marie Arnold
Emil and Marcia Baranko
Eugene and Sue Jackson
Frederick Messersmith
Gust Mittelstedt
Daniel and Carla Porter

George Schreiber
Loretta Schreiber
Dr. Dennis Wolf

Lifetime Donor Presidents Club (\$50,000-\$99,999)

Corporations, Foundations & Organizations

Bank of the West
Basin Electric Power Cooperative
Bremer Wealth Management
Charbonneau Car Center
Consolidated Telcom
Dakota Farm Equipment, Inc.
DCI Credit Services, Inc.
Ebeltoft, Sickler, Lawyers PLLC
Fisher Industries
Fraternal Order of Eagles
-Dickinson Aerie No 2328
Gate City Bank
Halliburton Energy Service, Inc.
KQCD TV-STC Broadcasting, Inc.

MBI Energy Services, Inc.
MBI Oil and Gas, LLC
MDU Resources Foundation
Montana Dakota Utilities Company
ND Pharmacy, Inc.
Roughrider Electric Cooperative, Inc.
S. M. Fencing and Energy Services,
Inc.

Slope Electric Cooperative, Inc.
Wells Fargo Bank
Western Cooperative Credit Union
Individuals

Richard and Shirley Dukart
Laurine Engel
Patrick Giese
Estate of Ruth Grande
Jerry and Lynette Heidecker
Harlin and Marie Kling
Dr. Harlan and Betty Larsen
Palmer Nelson Trust
James Nistler
Gilman and Monica Peterson

William Rase
Reed and Sandra Reyman
Willa Rustan
Gary Schwartz
Kenneth and Lee Steier
Robert and Alice Stranik
Alan Woodbury

Lifetime Donor Pacesetters Club (\$25,000-\$99,999)

Corporations, Foundations & Organizations

Agribank
All American Travel
American Trust Center
Badlands Orthopedics
Baker Hughes Foundation
Blackridge Enterprises, LLC
Bob's Oil Field Service, Inc.
Dacotah Banks, Inc.
Dickinson Auto Dealers
Dickinson Rotary Club
DMS Imaging
Elks Lodge 1137
ESP Computers & Software, Inc.
Howe, Hardy, Galloway & Maus, PC
Kadmas, Lee, & Jackson, Inc.
Kirkwood Bank and Trust
Kuntz Builders, Inc.
Mackoff Kellogg Law Firm
ONEOK Foundation, Inc.
Pump Systems, LLC
Quality Quick Print, Inc.
Sax Motor Company
Schlumberger Limited
St. John Evangelical Lutheran Church
Steier Oil Field Service
The Dickinson Press & The Advertiser
U.S. West Foundation
University of North Dakota
Weatherford US Lp

Individuals

Patrick and Beverly Altringer
Jody and Carla Arthaud
Kent and Jocelyn Carlson
Ray and Shirley David
Paul and Gail Ebeltoft
Myrtle Ericson
Dr. Dale and Glenice Hansen
Patrick and Jill Healy
Eckhardt and Della Heid
Mike and Kaye Kelley
Susie Lefor
Robert and Carol Lefor
John and Sue Prange
Gilmar Rotvold
Andrew and Joan Schmidt
Ronald and DeAnn Schmidt
Paul and Laurie Steffes
Dr. Sheldon and Mitzi Swenson
George Tuhy
George and Lynnelle Unruh
Jacob Weiler

Lifetime Donor Benefactors Club (\$10,000-\$24,999)

Corporations, Foundations & Organizations

Altringer Real Estate
Applebee's Neighborhood Grill & Bar
Berger Electric Inc.
Britton Jewelers, LTD
Burlington Northern Santa Fe Foundation
Coca-Cola Bottling Company of Dickinson
Dakota Sports
Dan Porter Motors, Inc.
Dickinson Charities, Inc.
Dickinson Clinic
Dickinson Truck Equipment
East End Auto and Truck Parts, Inc.
Ernst, Inc.
Euphoria Salon and Spa
First American Bank West
Fleck's Furniture and Appliances
Fraternal Order of Eagles Auxiliary
No. 2328

George R. Kuchynski Trust
German Hungarian Lodge
Great Plains Clinic, PC
Great Plains National Bank
Heart & Lung Clinic Foundation
I. Keating Furniture World, Inc.
Ironworks Welding, Inc.
Irsfeld Pharmacy, P.C.
JoAnn Egly Trust
Knights of Columbus Council 6308
Knights of Columbus, Council 1515
Kolling & Kolling, Inc.
Ladbury Funeral Service
Legend Energy Services LLC
Light Tower Rentals, Inc.
Missouri Basin Well Service, Inc.
Real Estate Company
Rehab Visions
Reichert Armstrong
Reichert Fisher Company, PC
Riddle's Jewelry
Schutz Foss Architects
Senior Citizens Activity Club-Belfield, ND

Sisters of Mercy of the Holy Cross
St. Anthony Club
Stevenson Funeral Home, Inc
Stockmen's Livestock Exchange
Tooz Construction, Inc.
Trial Runners
Truist
US Bank

Individuals

Kelly and Kjersti Armstrong
Troy and Jodi Bosch
Leo and Maxine Braun
Dennis and Phyllis Cannon
Dr. Carl Carlson
D. J. and Michelle Charbonneau
John and Gerry Dinsdale
Bradley and Brenda Fong
Joshua and Stephanie Franken
Howard and Barbara Freed
Gerard and Danette Gayda
Emma Gilliam
Cora Gilsdorf
Lona Gordon
Tracey and Jackie Hoff
Bill and Belva Jansen
Clint and Annie Johnson
Nancy Johnson
Dennis and Vaune Johnson
Tom and Arlys Jorda
Joseph and Mildred Kadmas
Frank Karsky
Edward and Antonia King
Delores Klein
Dr. Danuta Komorowska
Larry and Hyacinth Kostelecky
Terry Kovacevich
Kyle and Amber Kuntz
Constance Ladbury
Lucille Lamprecht
Mike and Sherryl Lefor
Albert Maxner Trust
Mike Obach
Dr. Bruce and Irene Olin
Jack Olin
Scott and Kathy Olin
Leslie and Dawn Olson
Jim and Sonja Ozbun
Sam and Donna Pasicznyk
Marlys Paulson
Peter and Cheryl Rackov
Dr. Douglas and Michelle Roise
Joe and Carlene Rothschilder
Randal and Kristi Schwartz
Dr. Daniel Sheps
Craig Steve and Millie Wagner
Alex Stockert
Marcella Storseth
John and Doreen Studsrud
Larry and Jill Tinjum
Jerome and Julie Wahl
Fred and Kay Werremeyer
Dr. Michael and Lori Wolf
Robert and Virginia Zent

Lifetime Donor Leadership Club (\$5000-\$9999)

Corporations, Foundations & Organizations

Ace Hardware
Allan's Decorating Center, Inc.
American Enterprise Investment Services
American State Bank & Trust
Badlands Barbecue & Barn Dance
Big K Industries, Inc.
Blue Moon, LLC
Border States Electric Supply
Braun Distributing
C & J Spec-Rent Services, Inc.
Cleon G Engel Family Unified Trust
Climb4acure, Inc
CoBank
Collection Center, Inc.
D. & J. Liquors, Inc.
Dakota Bone and Joint
Dakota Community Bank & Trust, N.A.
Denny's Electric & Motor Repair, Inc.
Dickinson Area Chapter of API
Dickinson Dental Center
Dickinson Parks and Recreation Dept
Dickinson State University
Double JJ Outfitters
Farmers Union Oil Company
From Heart and Hands Weddings and Events
Harvest Home
Harvest States Foundation
Herberger's Department Store
Highlands Engineering & Surveying PLLC
Hilltop Heritage Foundation, Inc.
IMSHealth Shared Business Services
Johnson & Johnson
Kovash Furniture, Inc.
Lady J's Catering Dickinson
Laurine Engel Family Unified Trust
Legend Energy Services LLC
Legend Homes, Inc.
Liquor Warehouse
Maus & Nordsven PC
Northern Improvement Company
Optimist Club of Dickinson
Ouellette Chiropractic, PC
Pioneer Drilling Services, Ltd.
Randy Boogaert's Mountain Supply
Real Estate Trust Account Comm.
Reichert H. L. Family Trust
REMCO Software, Inc.
Results Unlimited Marketing and Advertising
Roers West, LLC
Roughrider RV's, Inc.
Sandaker Consulting, Inc.
SDI Health LLC
Sodexho Marriott Mgt. Service
Southview Liquors
Southwest Business Machines, Inc.
St. Benedict's Health Center
Stallion Oilfield Service
Surveillance Data, Inc.
The Crossing
The Grainger Foundation
Theodore Roosevelt Medora Foundation
United Building Center
Walmart
Western Edge Aviation, LLC
Western Eye Clinic, LTD
William H. Smith & Associates, P.C.

Individuals

Ashley Asensio
Sidney and Renee Bailey
Lawrence and Elaine Bares
Dr. James and Ellen Baumgartner
Roger and Louane Beyer
Dr. Joel and Marie Blanchard
Paul and Jackie Bosch
Alvin Chalupnik
Steven and Angela Cole

Patient Highlights

Calendar Year
2017

Births: **683**

Average daily census: **14.45**

Diagnostic Imaging procedures: **30,140**

Surgical Procedures: **2,222**

Outpatient Clinic Visits: **33,058**

Total Joint Procedures: **196**

Mammograms: **1,326**

Jeanette Delap
Albert Dukart
George Dynes
Charles and Judith Finck
Kathy Fisher
Frederick and Judith Fleener
Joe and Sandi Frenzel
Dr. Shannon and Audra Galster
Delroy and Yvonne Gorecki
Timothy and Melissa Gross
Patrick and Tammy Grosulak
Calvin and Nancy Gustafson
Margaret Gustafson
Corey and Joelene Haller
Jeremy and Cristin Heidecker
Chad and Kimberly Heidt
Jon and Brenda Hendrickson
Dr. Mark and Michelle Hinricks
Bruce and Wava Howe
Dennis and Roene Hulsing
Adam and Ashley Hurlbert
Bradley Jaeger
Ray and Kathryn Jilek
Willis Johnson
Ray Ann Kilen
Bob and Becky Kitchen
Christian and Lisa Kostelecky
Drs. Gregory and Simin Kovacs
Frank and Doris Kubik
George Kuchynski
Dr. David and LaRae Kuylen
Dr. William and Vicki Lowe
Donald and Darlene Lutz
Todd and Denise Lutz
Dennis Lynch
Debra Marshall
Melvin and Dorothy Meduna
Scott and Tammy Meschke
Catherine Moore
Guy and Sandra Moos
Dr. Brian and Stacey O'Hara
Jon and DeeAnna Opstedahl
Shirley Osborn
Clive and Patricia Pelton
James and Rosella Perdaems
Carlos and Donna Royal
Dean and Danita Rummel
Kenneth and Shirley Sample
Betty Scherr
Jeff and Marya Skaare
Herbert Spurgeon
Sebastian and Celestine Stoltz
Chris and Laurie Strommen
Cassie Thompson
Mary Veigel
Willie and Billie Jo Winn
George and Arlene Zarak
Dr. Darrell and Mary Ann Zeller
Monty and Audrey Zins

**CHI
ST. ALEXIUS
HEALTH
DICKINSON
FOUNDATION
BOARD OF
DIRECTORS**

Kathy Olin, Chairperson

*Jason Hopfauf,
Vice Chairperson*

Susie Lefor, Treasurer

Cill Skabo

Nic Stevenson

Tammie Braun

Judi Schnell

Mark Hardy

*Reed Reyman, President,
CHI St. Alexis Health
Dickinson*

*Joseph Ruark,
VP Operational Finance,
CHI St. Alexis Health
Dickinson*

**Hospital
701-456-4000**

**Clinic (Dickinson)
701-456-4200**

**Clinic (Beach)
701-872-3777**



NON-PROFIT
U.S. POSTAGE
PAID
PERMIT #30
DICKINSON, ND
58601

Dickinson Foundation

2500 Fairway Street
Dickinson, ND 58601

CHI St. Alexis Health Dickinson Welcomes the Following New Providers:



Travis Booke, PA-C
Hospitalist



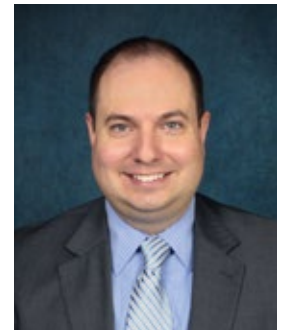
Emma Boyer, PA-C
Hospitalist



Lorrissa Bohlman, CRNA
Anesthesia



Dr. Shawna Baker
*Family Practice with
Obstetrics*



Dr. Craig Wolf
OB/Gyn